

**NOTES:**

1. THIS LOGIC IS APPLICABLE TO THE FOLLOWING:

VALVE	SOLENOID(SUPPLY) VALVE			SOLENOID(EXHAUST) VALVE	
	TRAIN A	TRAIN B	TRAIN C	TRAIN A	TRAIN B
FV-7414	FY-7414	FY-7414A	FY-7414B	FY-7414C	FY-7414D
FV-7424	FY-7424	FY-7424A	FY-7424B	FY-7424C	FY-7424D
FV-7434	FY-7434	FY-7434A	FY-7434B	FY-7434C	FY-7434D
FV-7444	FY-7444	FY-7444A	FY-7444B	FY-7444C	FY-7444D

- 2. COMMON ANNUNCIATOR WINDOW FOR ALL FOUR VALVES.
- 3. SWITCH MUST MAINTAIN PHYSICAL AND ELECTRICAL SEPARATION FOR TRAINS A+B

**GENERAL NOTE:**

THIS DRAWING REPRESENTS FUNCTIONAL REQUIREMENTS ONLY. REFER TO ELECTRICAL REFERENCE DRAWING FOR HARDWARE IMPLEMENTATION.

NO.	DATE	DESCRIPTION	BY	CHK	PROJ. MGR.	DES. ENGR.	APP. ENGR.	VER.
D 5/78		REV. AS NOTED; ISSUE FOR USE						
C 3/77		NO REVISION						
B 2/76		REVISIONS: NO REVISION						
A 3/76		INITIAL REVIEW						

**Brown & Root Inc.**  
ENGINEERS-CONSTRUCTORS  
HOUSTON, TEXAS

**SOUTH TEXAS PROJECT**

DRAWING TITLE: MAIN STEAM ISOLATION VALVES LOGIC DIAGRAM SYSTEM: S-10

CONTRACT NO: CR-0241 SCALE: NA

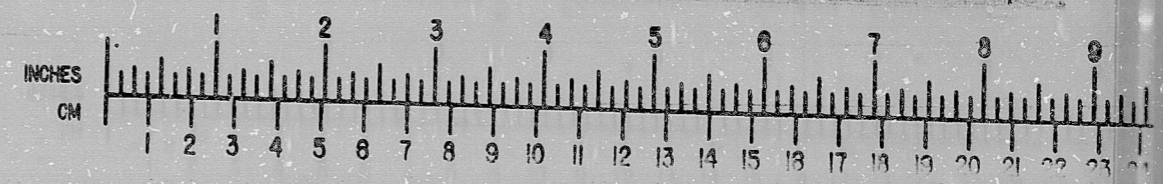
DRAWING NO: S-10 I-Z-322 OF 3 SHT. 1

PKG. NO. 107 AREA 102

PRELIMINARY REVIEW USE CONSTRUCTION

**BROWN & ROOT INC.**  
MICROFILM SERVICES

THURSDAY, SEPT. 27, 1979



INFORMATION  
THIS DOCUMENT IS  
SUBJECT TO REVISION  
WITHOUT NOTIFICATION  
TO THE USER OF THIS  
COPY

REPLACED 02-27-79

FORM 1

RIDS

8112090625

