

NOTES:

1. THIS LOGIC IS APPLICABLE TO THE FOLLOWING:

MAIN STEAM ISOL. B.P. VLV.	MAIN STEAM ISOL. VLV.	SOL VALVE TRAIN A	SOL VALVE TRAIN B	CONTROL ON SWITCH LOC.	ELSG. REF. DATA NO.
FV-7412	FSV-7414	FV-7412	FV-7412A	ZCP-007	I-E-6219
FV-7422	FSV-7424	FV-7422	FV-7422A	ZCP-007	I-E-6219
FV-7432	FSV-7434	FV-7432	FV-7432A	ZCP-007	I-E-6219
FV-7442	FSV-7444	FV-7442	FV-7442A	ZCP-007	I-E-6219

2. SWITCH MUST MAINTAIN PHYSICAL AND ELECTRICAL SEPARATION FOR TRAINS A & B.

GENERAL NOTE:
THIS DRAWING REPRESENTS FUNCTIONAL REQUIREMENTS ONLY. REFER TO ELECTRICAL REFERENCE DRAWING FOR HARDWARE IMPLEMENTATION.

D 5/78	REV. AS NOTED; ISSUED FOR USE	BY	CHK	PROJ. MGR.	DATE	DESCRIPTION	BY	CHK	PROJ. MGR.	DATE	DESCRIPTION
C 3/77	NO REVISION	MAN									
B 1/76	EXTERNAL REVIEW; NO REVISIONS	MAN									
A 9/74	INITIAL REVIEW	MAN									

MICROFILMED JUN 1977

PKG. NO. 107 AREA 102

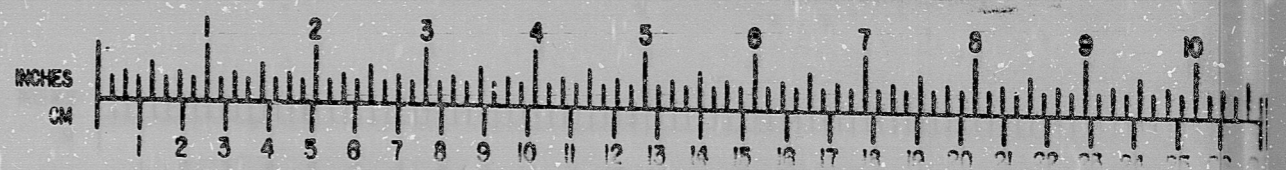
BROWN & ROOT INC.
ENGINEERS-CONSTRUCTORS
HOUSTON, TEXAS

SOUTH TEXAS PROJECT

DRAWING TITLE	CONTRACT NO.	SCALE
MAIN STEAM ISOL. BYPASS VALVES	CR-0241	NA
LOGIC DIAGRAM	DRAWING NO.	45-10
SYSTEM: S-10	I-Z-3240E	SHT. 2

PRELIMINARY REVIEW USE CONSTRUCTION

BROWN & ROOT INC.
MICROFILM SERVICES



THURSDAY, SEPT. 27 1979

TERA APERTURE CARD

INFORMATION
THIS DOCUMENT IS SUBJECT TO REVISION WITHOUT NOTIFICATION TO THE USER OF THIS COPY

MICROFILMED 3/82

MICROFILMED 3/82

RIDS

812090624

