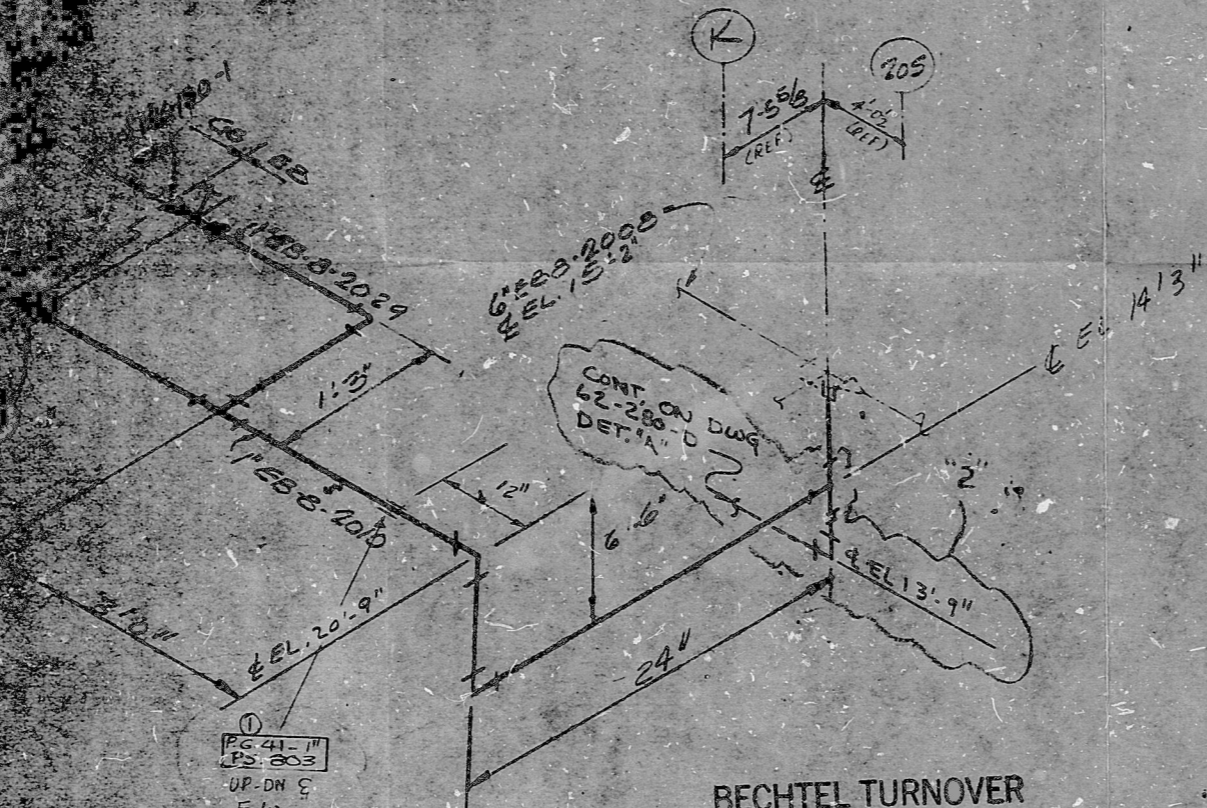


POOR ORIGINAL

THIS SHEET IS FOR HANGER
INFORMATION ONLY.
SEE ORIGINAL FOR ALL
OTHER INFORMATION.



NOTES

1. FIELD TO CHECK ALL DIMENSIONS
3. MARK EACH ERECTABLE SPOOL WITH SKETCH NO., LINE CLASS, SYSTEM, UNIT & NO. WITH A NON-CHLORIDE ~~WHITE~~ PAINT MARKER
4. ALL PIPING PER ANSI B31.1
6. O. C. LEVEL "B"
7. OPER. COND. SEE SPEC 6520-M-100 LATEST EDITION
8. ALT. MAT'L: FITTINGS A-181 GR II
A-105 GR II
A-105 GR I

FOR INFORMATION ONLY

SI
APERTURE
CARD

COMPUTER INFORMATION	
ZONE NO.	10150
P-EB-8-2029	36
P-EB-8-2010	36

BECHTEL TURNOVER
TO BG & E
FINAL DOCUMENT
REV. HA DATE 9-19-75

8901050284 8901050284

START UP NO. 36	COST CODE:	INSULATION CLASS:	THICK: -	Δ	
WELDING CO/OA REQUIREMENTS		REFERENCE			
WELDING PROCEDURE: <i>HT 2</i>		P&I.D. NO.: M-458 311			
PRE WELD INSP.: <i>REQ.</i>		PIPING DWG.: FSK MP-3603			
WELDING CONTROL ROD:		AREA No. 10 ELEV. 12'-0"			
HELIC. ARC ROD: <i>REQ.</i>		UNIT No.: 2			
STICK ROD: <i>HTC</i>		BLDG.: TURBINE			
PRE-HEAT F°: <i>100</i>		HANGER TYPE: SEISMIC			
N.D.T.: <i>HTC</i> DYE PENE <input type="checkbox"/> X-RAY <input type="checkbox"/>		DWG. NO.:			
MAX. INTER: INTER PURGE:		QUALITY CONTROL DATA			
PIPE HEAT NOS.:		NON-NUCLEAR			
FITTINGS HEAT NOS.:		QC SYSTEM NO.:			
VALVES HEAT NOS.:		ACCEPTANCE DATES			
GC SYSTEM NO.:		PIPE SYZ.			
BY: HANDBY:		BY:			

REV.	DATE	DESCRIPTION	DRN.	CHK.	APP.
2	11/75	AS BUILT INFO EDCU FSK MP 3603 COR 88-284 (FOR E7-115)	JR	DR	CC

BECHTEL CORP
GAITHERSBURG, MARYLAND

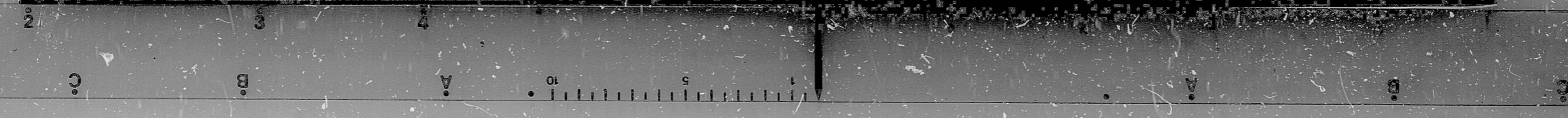
CALVERT CLIFFS UNIT 1 & 2
BALTIMORE GAS & ELECTRIC CO.
ELECTRIC ENGINEERING DEPARTMENT

E-B-8 (CRITICAL)

AUX. F.W. PUMP TURBINE STEAM SUPPLY

JOB NO.	DWG. NO.	REV.
6750 FSK MP	2871	2

HEAT NO.	ASTM NO.	GRD. CK.	REQUISITION
A-194	2H		
A-193	87		
A-105	II		
A-181	I		
A-181	I		
A-105	II		



PDR RIDS

89 01050284

