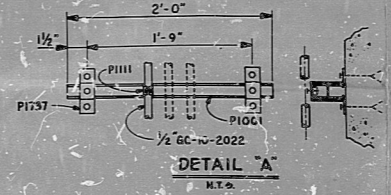


QTY	DESCRIPTION	UNIT	AMOUNT
1	1/2" SCH. 40S. 3000# PIPE	FT.	1.00
1	1/2" SCH. 40S. 3000# ELBOW	EA.	1.00
1	1/2" SCH. 40S. 3000# GATE VALVE	EA.	1.00
1	1/2" SCH. 40S. 3000# SOCKET	EA.	1.00
1	1/2" SCH. 40S. 3000# CHECK VALVE	EA.	1.00

- NOTES:**
- FIELD TO CHECK ALL DIMENSIONS.
  - MARK EACH ELECTRICAL SYMBOL WITH QUOTE NO., LINE CLASS, SYSTEM, UNIT & NO. WITH A NON-CHLORIDE BLACK PAINT MARKER.
  - ALL PIPING PER ANSI B31.1.
  - Q.C. LEVEL "D".
  - OPER. COND.: SEE SPEC. M-601 (LATEST REV.).
  - ALTERNATE MATERIAL:  
PIPE: A-312, TP-304  
FITTINGS: A-182, F-304 (2000# OR 3000#).
  - FOR HANGER DETAILS SEE FSK-MP-971, SHEET 113.

COMPUTER INFORMATION		
LINE NO.	SU.	FTG.
GC-10-2022	39	534
HD-19	36	2



SI  
APERTURE  
CARD

TO BE USED AS A  
CONTROLLED DRAWING  
ONLY FOR 15 DAYS  
AFTER ISSUANCE  
DATE OF DEC 10 1988

THIS DRAWING DERIVED IN PART  
FROM FSK-MP-3996-H, REV 3 (INACTIVE).

START UP NO. 2-58		COST CODE:		INSULATION CLASS: 3X		THICK: 1 1/2"	
WELDING PROCEDURE: P8-T-AG-R9				REFERENCE:			
PRE WELDING INSPECTION: REQ'D				P&ID NO: M-40 & M-119 SH-1			
WELDING CONTROL: WELDING				PIPING DWG: M-228, L90, 296 & 268			
WELDING PROC: ER-308				AREA NO: 37, 8410 ELEV: 115'-07", 27'-0"			
STICK NO: M/R				UNIT NO: 2			
PRE HEAT: 50°				BLDG: TURBINE			
H.O.T. N/A				HANGER TYPE: THERMAL			
MAX. INTER: 2				QUALITY CONTROL DATA			
PIPE HEAT NOS:				NON NUCLEAR			
FITTINGS HEAT NOS:				VALVES HEAT NOS:			
DC SYSTEM NO:				ACCEPTANCE DATES:			
PIPE DYE:		BY:		HANGERS:		BY:	

Rev	Date	Description	Chg	Chk	Appr	By
3	3-10-87	AS BUILT UPON ER 8 FSK-MP-3996-H (REV 3) (INACTIVE) (FCR 81-1066)				
4	2/2/11	AS BUILT UPON ER 8 FSK-MP-3996-H (REV 3) (INACTIVE) (FCR 81-1066)				

8901050243	
GC-10 (NON NUCLEAR)	CHEMICAL ADDITION,
AMMONIA & HYDRAZINE TO	AUX. FEEDWATER PUMPS
NO. 21 & 22	ELECTRIC PRODUCTION PLANT
CALVERT CLIFFS UNIT 2	
SALTSVILLE GAS AND ELECTRIC COMPANY	
NUCLEAR ENGINEERING SERVICES DEPARTMENT	
Drawn:	W. GREEN
Checked:	J. GREEN
Design:	
Civil Eng:	
Elect. Eng:	
I. & C. Eng:	
Mech. Eng:	
Design Eng:	
Approved:	
Date:	
Drawn No:	FSK-MP-3996-E 4

8901050243

PDR RIDS

8901050243

