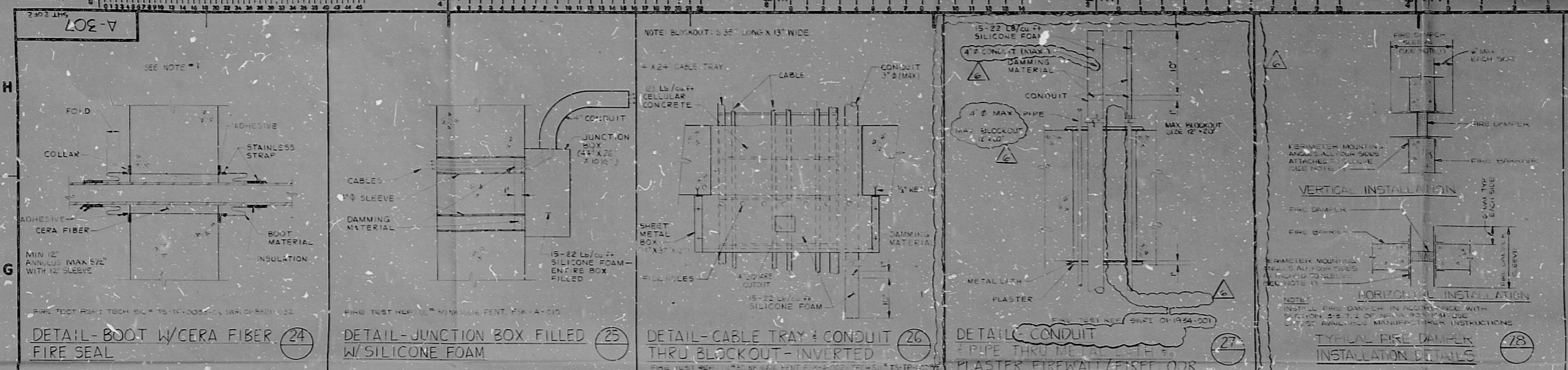


This drawing and the design it covers are the property of BECHTEL. They are made to order and are not to be reproduced, copied, loaned, exhibited, or used except in the manner and for the purposes for which they were made. Any other use without the express approval of BECHTEL is prohibited. BECHTEL is not responsible for any errors or omissions in this drawing or for any damage or injury resulting from its use.



DETAIL-BOOT W/CERA FIBER (24)

DETAIL-JUNCTION BOX FILLED W/SILICONE FOAM (25)

DETAIL-CABLE TRAY & CONDUIT THRU BLACKOUT-INVERTED (26)

DETAIL-CONDUIT & PIPE THRU PLASTER FIRE-RATED FLOOR (27)

TYPICAL FIRE DAMPER INSTALLATION DETAILS (78)

- NOTES:
- REFER TO REFERENCED TEST REPORT TO DETERMINE MAXIMUM ALLOWED
 - SEE SECTION 16 FOR INTERNAL SEAL MARKING DETAIL
 - CONDUITS PENETRATING FIRE BARRIERS MUST BE PROVIDED WITH AN INTERNAL FIRE SEAL UNLESS THE CONDUIT EXTENDS GREATER THAN FIVE FEET ON EACH SIDE OF THE BARRIER IN WHICH CASE A NON-CONDUCTIBLE SMOKE SEAL IS REQUIRED IN ONE END. SMOKE SEAL SHOULD CONSIST OF 2" OF SILICONE FOAM MINERAL FIBER OR ENGINEERING APPROVED EQUAL
 - FOR ADDITIONAL APPROVED DESIGN DETAILS SEE A-307-A-1000

SI
APERTURE
CARD

8901030222

<input checked="" type="checkbox"/>	DESIGNED BY	T.W. KS	P.L. EOR
<input checked="" type="checkbox"/>	REVIEWED BY	T.W. KS	ROR
<input checked="" type="checkbox"/>	AS BUILT - ENGR. REQUEST FOR CHANGE	KS	REN
DATE	REVISED	BY	CHKD
BECHTEL CORPORATION SAN FRANCISCO			
ARKANSAS POWER & LIGHT COMPANY ARKANSAS NUCLEAR ONE			
FIRE SEAL DETAILS			
	JOB NO.	DRAWING NO.	REV.
11406	A-307	6	6

PDR RIDS

8901030222

