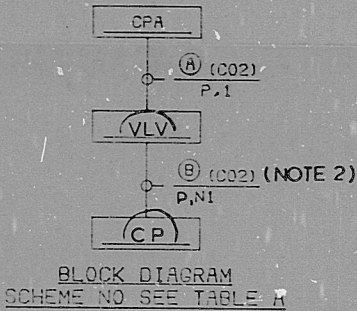
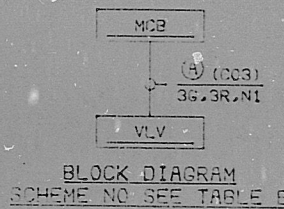
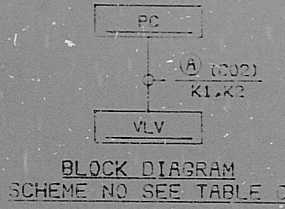
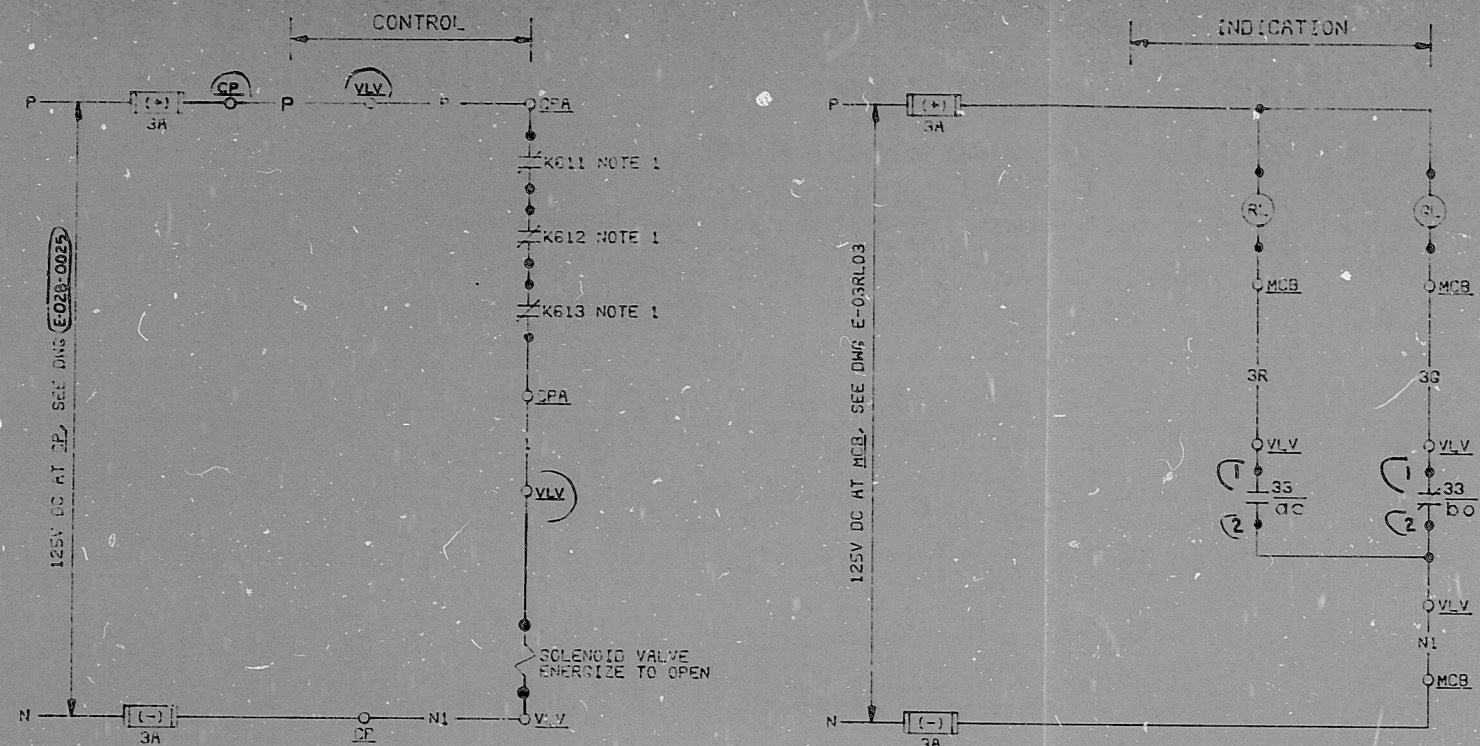


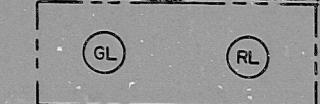
This drawing and the design it covers is the property of the utilities which are participating in the SNUPPS Project. It is loaned to the borrower for express agreement that it will not be reproduced, copied, loaned, exhibited, or used except in the limited way and private use permitted by written consent given by the SNUPPS utilities to the borrower.



SR2201A 01/16/79

DEVICE 33 - POSITION SWITCHES			
CONTACT	VALVE POSITION		FUNCTION
	CLOSED	OPEN	
1			RED LIGHT
2			SPARE
3			SPARE
4			COMPUTER
5			SPARE
6			SPARE
7			GREEN LIGHT
8			SPARE
9			SPARE
10			SPARE

SOLID BAR INDICATES CONTACT CLOSED  
MICRO-SWITCH MODEL L50051



GE ET-16  
INDICATING LIGHT  
MODEL NOS. 01686708G3R  
011686708G3G  
(FOR INDICATING LIGHT NO. SEE TABLE B)

REFERENCE DWGS:  
M-02AEOI

- NOTES:
1. K611, K612 & K613 CONTACTS OPEN ON FEEDWATER ISOLATION. FOR CONTACT TERMINAL NOS SEE TABLE A. FOR DETAILS SEE WEST DWG BECHTEL VP NO M-767-190.
  2. THESE CIRCUITS TO BE ROUTED IN CONDUIT WITHIN SEISMIC NON-CATEGORY I BUILDING.

TABLE C

COMPUTER REF DWG	J-106-0115	J-106-0115	J-106-0115	J-106-0115
BECHTEL VP NO				
COMPUTER POINT	AEZ550	AEZ560	AEZ570	AEZ580
VALVE NO - VLV	AEFCV550	AEFCV560	AEFCV570	AEFCV580
COMPUTER LOC - PC	RJ158B	RJ159B	RJ159B	RJ158B
SCHEME NO	6AER18A	6AER18B	6AER18C	6AER18D

TABLE B

IND. LIGHT NO.	AEZL550	AEZL560	AEZL570	AEZL580
VALVE NO - VLV	AEFCV550	AEFCV560	AEFCV570	AEFCV580
MAIN CONTROL BOARD - MCP	RL006	RL006	RL006	RL006
SCHEME NO	6AEK18J	6AEK18K	6AEK18L	6AEK18M

TABLE A

K611, K612, K613 CONTACT TERM NOS	1-2	1-2	3-4	3-4	7-8	7-8	9-10	9-10
CONTROL PNL LOC - CPA	SB029C	SB031C	SB029C	SB032C	SB029C	SB032C	SB029C	SB032C
CONTROL PNL LOC - CP	RP289	RP290	RP289	RP290	RP289	RP290	RP289	RP290
SOLENOID VALVE NO - VLV	AEFY550B	AEFY550A	AEFY560B	AEFY560A	AEFY570B	AEFY570A	AEFY580B	AEFY580A
MAIN VALVE NO	AEFCV550	AEFCV560	AEFCV570	AEFCV580	AEFCV550	AEFCV570	AEFCV580	AEFCV580
SCHEME NO	1AEK18A	4AEK18B	1AEK18C	4AEK18D	1AEK18E	4AEK18F	1AEK18G	4AEK18H

TI APERTURE CARD

NO.	DATE	REVISIONS	BY	CHK	DESIGN SUPP.	ENGR	PROJ ENGR
1		ISSUED FOR CONST					

SCALE: \_\_\_\_\_

DESIGNED: \_\_\_\_\_

APPROVED: \_\_\_\_\_

DRAWN: \_\_\_\_\_

CHECKED: \_\_\_\_\_

ENGR: \_\_\_\_\_

PROJ ENGR: \_\_\_\_\_

**BECHTEL**  
GAITHERSBURG, MARYLAND.

**SNUPPS**

SCHEMATIC DIAGRAM  
BYPASS FEEDWATER  
CONTROL VALVES

UTILITY DRAWING NO.	REV

JOB NO.	BECHTEL DRAWING NO.	REV
10466	E-03AE18 (Q)	2

DRAWING APPLICABLE TO UNITS: 1 2 3 4 5 6 7 8

17 x 22 "C" SIZE

REVIEW LEVEL 3

I certify that the image contained on this frame was made in the normal and regular course of business, on the date stated below and that it is an accurate reproduction of the document(s) submitted to Hitt Graphics.  
DATE: 5-27-79 OPERATOR: [Signature] SUPERVISOR: [Signature]



PDR RIDS

8410090260

