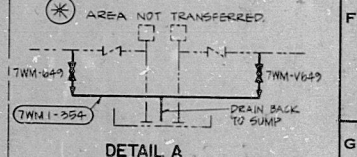


22
17
11
8.5
11
17
22

22
17
11
8.5
11
17
22

THE DRAWING HAS BEEN HANDLED UP TO SHOW THE BOUNDARIES FOR SYSTEMS TRANSFERRED TO LOCAL PLANT STAFF AND WORK IS TO BE PERFORMED WITHIN THE DESIGNATED BOUNDARIES PRIOR TO LOCAL APPROVAL.

DEVISION BY CH SYSTEM TRANSFERRED



DETAIL A

NO	DATE	REVISION	BY	CH	APPROVED
15	7/14/65				

NOTES

1. AD - AREA DRAIN
2. ED - EQUIPMENT DRAIN
3. FD - FLOOR DRAIN
4. - BY VENDOR

NUCLEAR SAFETY
RELATED IN PART ONLY

REFERENCE DRAWINGS

VALVES AND SPECIALTIES LIST - 5817.07449
 PIPING LINE LIST - 5817.07549
 INSTRUMENT SCHEMATICS AND LOGIC DIAGRAMS - 5817.07649
 INSTRUMENT LIST - 5817.07749

THIS DOCUMENT IS THE PROPERTY OF EBASCO SERVICES INCORPORATED AND IS LOANED TO YOU UNDER THE CONDITION THAT YOU WILL NOT REPRODUCE OR DISCLOSE TO ANY OTHER PERSON OR ORGANIZATION THE INFORMATION CONTAINED HEREIN WITHOUT THE WRITTEN PERMISSION OF EBASCO SERVICES INCORPORATED.

LOUISIANA POWER & LIGHT COMPANY
 WATERFORD S.E.S. UNIT NO. 3
 1977-1165 MW INSTALLATION

FLOW DIAGRAM
SUMP PUMP SYSTEM

NO	DATE	REVISION	BY	CH	APPROVED
15	7/14/65				
16	7/14/65				
17	7/14/65				
18	7/14/65				

8410090257

PDR RIDS

