

**START UP STRAINER SHELL (COND PUMPS)**  
 #1 PUMP #2 PUMP #3 PUMP  
 INST TAPS INST TAPS INST TAPS  
 CS-1048 CS-1050 CS-1052  
 CS-1049 CS-1051 CS-1053

**START UP STRAINER SHELL (COND PUMPS)**  
 #1 PUMP #2 PUMP #3 PUMP  
 INST TAPS INST TAPS INST TAPS  
 FW-1045 FW-1047 FW-1049  
 FW-1048 FW-1050 FW-1052  
 FW-1046 FW-1048 FW-1050

**START UP STRAINER SHELL (COND PUMPS)**  
 #1 PUMP #2 PUMP #3 PUMP  
 INST TAPS INST TAPS INST TAPS  
 FW-742 FW-745 FW-748  
 FW-740 FW-743 FW-746  
 FW-741 FW-744 FW-747

**NOTES**  
 (1) FURNISHED WITH CONDENSATE FOR PERFORMANCE CALCULATIONS  
 (2) STARTS IDLE PUMP ON LOW HEADER PRESSURE  
 (3) SOLENOID VALVE TO BE ENERGIZED WHEN PUMP MOTOR IS ENERGIZED  
 (4) START-UP STRAINER (INTERIORS REMOVED)  
 (5) LO PRESSURE (BLOCK) ON START OF PUMP ONLY  
 (6) FURNISHED BY G.E. CO. WITH TURBINE  
 (7) CONNECTION FOR INITIAL PIPE SYS. CLEANSING  
 (8) ELECTRICAL CONTROL PANEL  
 (9) LOCATED NEAR CONDENSER  
 (10) SOLENOID VALVE ENERGIZED WITH TURE OPERATING (INJECTION VALVES ONLY), DE-ENERGIZED WITH TURE STOP (TURBINE STOP)  
 (11) LOCATED ON REHEATER OPERATING PANEL (10)  
 (12) 2" INSTRUMENT VALVES A&B ON EACH D-S DEVICE

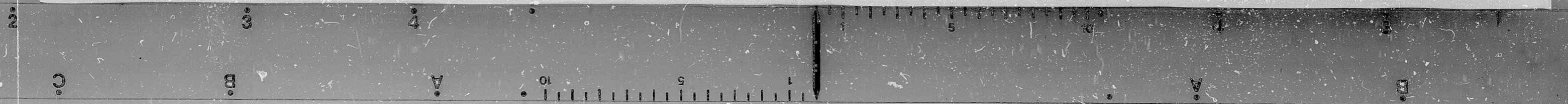
**INFORMATION ONLY CONTROLLED**

DATE

10/12/54	REVISED DWG PER AS-BUILT	11
10/12/54	REVISED PER AS-BUILT	12
10/12/54	REVISED PER AS-BUILT	13
10/12/54	REVISED PER AS-BUILT	14
10/12/54	REVISED PER AS-BUILT	15
10/12/54	REVISED PER AS-BUILT	16
10/12/54	REVISED PER AS-BUILT	17
10/12/54	REVISED PER AS-BUILT	18
10/12/54	REVISED PER AS-BUILT	19
10/12/54	REVISED PER AS-BUILT	20
10/12/54	REVISED PER AS-BUILT	21
10/12/54	REVISED PER AS-BUILT	22
10/12/54	REVISED PER AS-BUILT	23
10/12/54	REVISED PER AS-BUILT	24
10/12/54	REVISED PER AS-BUILT	25
10/12/54	REVISED PER AS-BUILT	26
10/12/54	REVISED PER AS-BUILT	27
10/12/54	REVISED PER AS-BUILT	28
10/12/54	REVISED PER AS-BUILT	29
10/12/54	REVISED PER AS-BUILT	30
10/12/54	REVISED PER AS-BUILT	31
10/12/54	REVISED PER AS-BUILT	32
10/12/54	REVISED PER AS-BUILT	33
10/12/54	REVISED PER AS-BUILT	34
10/12/54	REVISED PER AS-BUILT	35
10/12/54	REVISED PER AS-BUILT	36
10/12/54	REVISED PER AS-BUILT	37
10/12/54	REVISED PER AS-BUILT	38
10/12/54	REVISED PER AS-BUILT	39
10/12/54	REVISED PER AS-BUILT	40
10/12/54	REVISED PER AS-BUILT	41
10/12/54	REVISED PER AS-BUILT	42
10/12/54	REVISED PER AS-BUILT	43
10/12/54	REVISED PER AS-BUILT	44
10/12/54	REVISED PER AS-BUILT	45
10/12/54	REVISED PER AS-BUILT	46
10/12/54	REVISED PER AS-BUILT	47
10/12/54	REVISED PER AS-BUILT	48
10/12/54	REVISED PER AS-BUILT	49
10/12/54	REVISED PER AS-BUILT	50

SI APERTURE CARD

8812200220





PDR RIDS

8812200220

