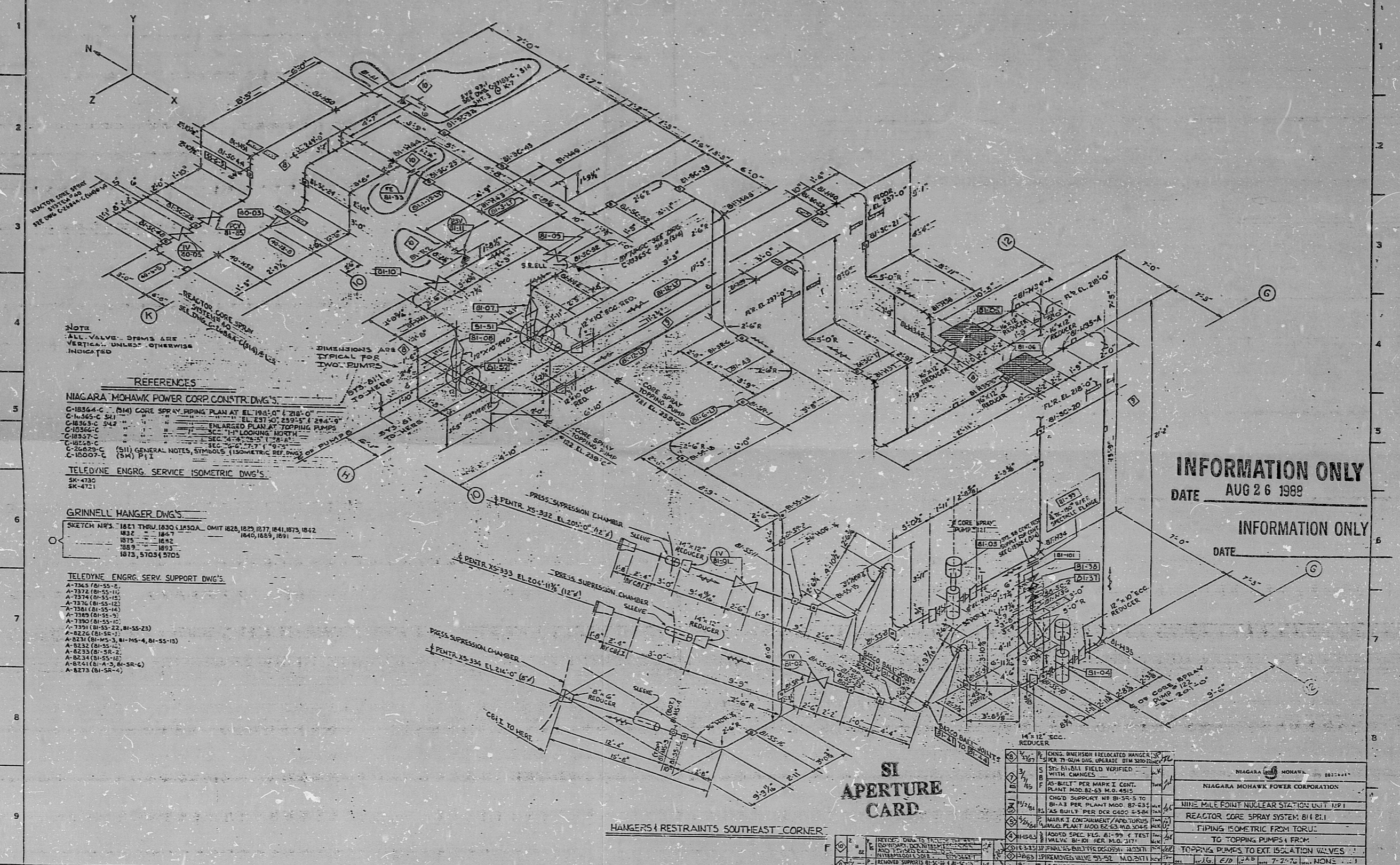


C-26645-C SHEET NO.3



NOTE
ALL VALVE STEMS ARE VERTICAL UNLESS OTHERWISE INDICATED

REFERENCES

- NIAGARA MOHAWK POWER CORP. CONSTR. DWG'S.
- C-18364-C (S14) CORE SPRAY PIPING PLAN AT EL. 210'-0"
 - C-18365-C (S4) " " " " " " " EL. 237'-0" 239'-5" & 284'-0"
 - C-18366-C (S42) " " " " " " " ENLARGED PLAN AT TOPPING PUMPS
 - C-18367-C " " " " " " " SEC. 4'-8" 4'-10" 1'-8" 8'-1"
 - C-18368-C " " " " " " " SEC. 2'-0" 2'-2" 1'-0" 5'-3"
 - C-26829-C (S11) GENERAL NOTES, SYMBOLS (ISOMETRIC REF. DWG'S OF PUMPS)
 - C-10007-C (S14) P.I.
- TELEDYNE ENGRG. SERVICE ISOMETRIC DWG'S.
- SK-4730
 - SK-4731

GRINNELL HANGER DWG'S.

- SKETCH NOS. 1821 THRU 1830 (LAST) OMIT 1828, 1829, 1877, 1841, 1873, 1842
 1832 " " " " " " " 1847
 1875 " " " " " " " 1892
 1889 " " " " " " " 1895
 1873, 5703, 5705

TELEDYNE ENGRG. SERV. SUPPORT DWG'S.

- A-7363 (01-55-2)
- A-7372 (01-55-11)
- A-7374 (01-55-15)
- A-7376 (01-55-12)
- A-7381 (01-55-14)
- A-7389 (01-55-9)
- A-7390 (01-55-10)
- A-7391 (01-55-22, 01-55-23)
- A-8226 (01-55-1)
- A-8231 (01-55-3, 01-55-4, 01-55-13)
- A-8232 (01-55-14)
- A-8233 (01-55-2)
- A-8234 (01-55-12)
- A-8251 (01-55-3, 01-55-6)
- A-8273 (01-55-2)

SI APERTURE CARD

NO.	DATE	DESCRIPTION
1	7/18/87	ISSUED FOR CONSTRUCTION
2	8/1/87	REVISION PER MARK 1 CONT. PLANT MOD. B2-23
3	8/1/87	AS-BUILT PER MARK 1 CONT. PLANT MOD. B2-23
4	8/1/87	AS-BUILT PER MARK 1 CONT. PLANT MOD. B2-23
5	8/1/87	REVISION PER MARK 1 CONT. PLANT MOD. B2-23
6	8/1/87	REVISION PER MARK 1 CONT. PLANT MOD. B2-23
7	8/1/87	REVISION PER MARK 1 CONT. PLANT MOD. B2-23
8	8/1/87	REVISION PER MARK 1 CONT. PLANT MOD. B2-23
9	8/1/87	REVISION PER MARK 1 CONT. PLANT MOD. B2-23
10	8/1/87	REVISION PER MARK 1 CONT. PLANT MOD. B2-23

INFORMATION ONLY
 DATE AUG 26 1989
 INFORMATION ONLY
 DATE

HANGERS & RESTRAINTS SOUTHEAST CORNER

Handwritten signature: C. J. ...

NIAGARA MOHAWK CORPORATION
 NINE MILE POINT NUCLEAR STATION UNIT #1
 REACTOR CORE SPRAY SYSTEM: BI 811
 PIPING ISOMETRIC FROM TORJ TO TOPPING PUMPS TO EXT. ISOLATION VALVES
 3-N21-S14
 C-26645-C
 SHEET NO.3

PDR RIDS

8812200202

