

17"

11"

8.5"

8.5"

11"

17"

17"

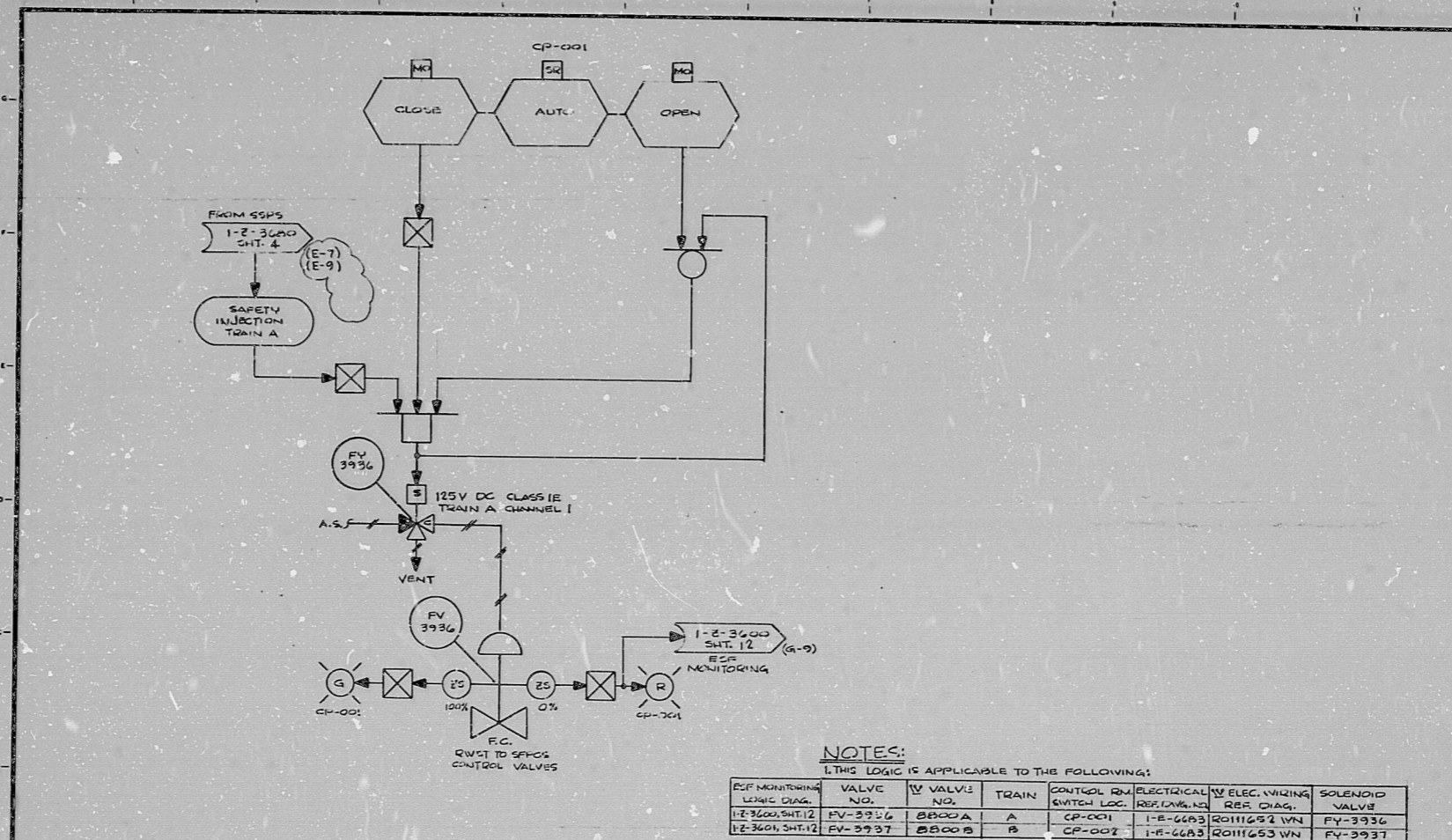
11"

8.5"

8.5"

11"

17"



NOTES:

1. THIS LOGIC IS APPLICABLE TO THE FOLLOWING:

REF. MONITORING LOGIC DIAG.	VALVE NO.	V VALVE NO.	TRAIN	CONTROL SW. LOC.	ELECTRICAL REF. DIAG.	ELEC. WIRING RES. DIAG.	SOLENOID VALVE
1-2-3600 SHT. 12	FV-3936	BB000A	A	CP-001	1-E-6693	RO111692 WN	FV-3936
1-2-3601 SHT. 12	FV-3937	BB000B	B	CP-002	1-E-6693	RO111693 WN	FV-3937

**GENERAL NOTE:**  
THIS DRAWING REPRESENTS FUNCTIONAL REQUIREMENTS ONLY. REFER TO ELECTRICAL REFERENCE DRAWING FOR HARDWARE IMPLEMENTATION.

INFORMATION  
THIS DOCUMENT IS  
SUBJECT TO REVISION  
WITHOUT NOTIFICATION  
TO THE USER OF THIS  
COPY

TERA  
APERTURE  
CARD

C 478 ISSUED FOR USE, REV. AS NOTED		DATE	BY	CHKD	PROJ. ENGR.	DATE	DESCRIPTION	BY	CHKD	PROJ. ENGR.	DATE	DESCRIPTION	BY	CHKD	PROJ. ENGR.	DATE	DESCRIPTION
C 077 PERIODIC REVIEW - 18 MONTHS		DATE	BY	CHKD	PROJ. ENGR.	DATE	DESCRIPTION	BY	CHKD	PROJ. ENGR.	DATE	DESCRIPTION	BY	CHKD	PROJ. ENGR.	DATE	DESCRIPTION
A 176 INITIAL REVIEW		DATE	BY	CHKD	PROJ. ENGR.	DATE	DESCRIPTION	BY	CHKD	PROJ. ENGR.	DATE	DESCRIPTION	BY	CHKD	PROJ. ENGR.	DATE	DESCRIPTION

**Brown & Root Inc.**  
ENGINEERS CONSTRUCTORS  
HOUSTON, TEXAS

**SOUTH TEXAS  
PROJECT**

DRAWING TITLE  
**SAFETY INJECTION  
RWSV TO SFPCS VALVES  
LOGIC DIAGRAM  
SYSTEM N-12**

CONTRACT NO. SCALE  
CR-0241 NA

DRAWING NO. DATE  
1-2-3393C  
SHT. 1

PRELIMINARY  REVIEW  USE  CONSTRUCTION

**BROWN & ROOT INC.**  
**MICROFILM SERVICES**

WEDNESDAY, MAY 17 1973





RIDS

8112090598

