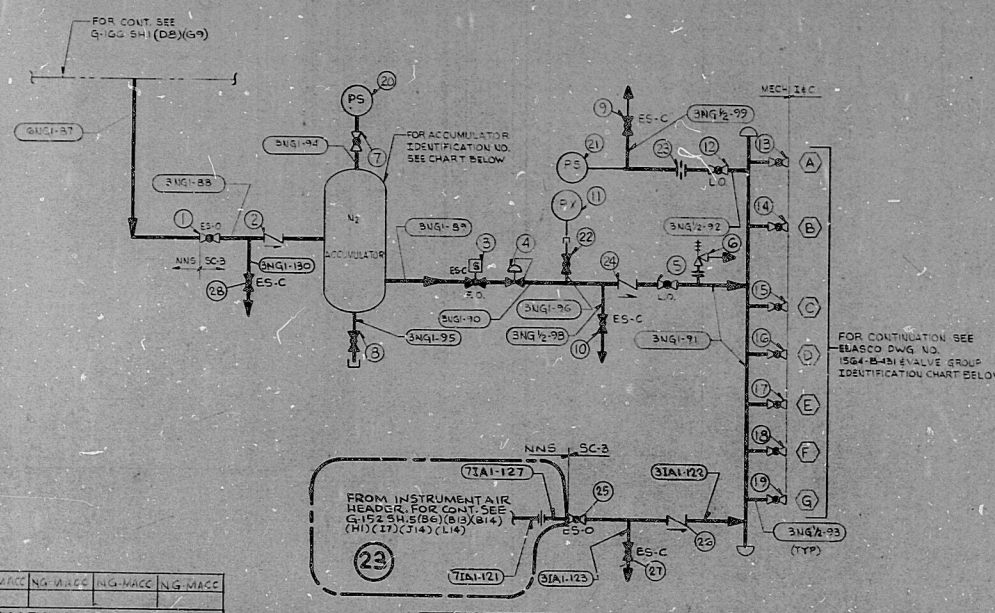


SYSTEM TRANSFER REVISION  
THIS DRAWING HAS BEEN MADE TO SHOW THE CONNECTIONS  
FOR SYSTEMS TRANSFERRED TO LPAI PLANT STAFF. NO WORK IS  
TO BE PERFORMED UNLESS THE INDICATED BOARDING PRIOR TO  
LPAI APPROVAL.  
REVISION BY CHL SYSTEM TRANSFERRED

ST O TMS MSP 23 MAY 1954

22'  
17'  
11'  
9.5'  
8.5'  
11'  
17'  
22'

22'  
17'  
11'  
9.5'  
8.5'  
11'  
17'  
22'



ACCUMULATOR IDENTIFICATION CHART

ACCUM. NO.	III	IV	V	VI	VII	VIII
1	SNG-701	SNG-702	SNG-703	SNG-704	SNG-705	SNG-706
2	SNG-707	SNG-708	SNG-709	SNG-710	SNG-711	SNG-712
3	SNG-713	SNG-714	SNG-715	SNG-716	SNG-717	SNG-718
4	SNG-719	SNG-720	SNG-721	SNG-722	SNG-723	SNG-724
5	SNG-725	SNG-726	SNG-727	SNG-728	SNG-729	SNG-730
6	SNG-731	SNG-732	SNG-733	SNG-734	SNG-735	SNG-736
7	SNG-737	SNG-738	SNG-739	SNG-740	SNG-741	SNG-742
8	SNG-743	SNG-744	SNG-745	SNG-746	SNG-747	SNG-748
9	SNG-749	SNG-750	SNG-751	SNG-752	SNG-753	SNG-754
10	SNG-755	SNG-756	SNG-757	SNG-758	SNG-759	SNG-760
11	SNG-761	SNG-762	SNG-763	SNG-764	SNG-765	SNG-766
12	SNG-767	SNG-768	SNG-769	SNG-770	SNG-771	SNG-772
13	SNG-773	SNG-774	SNG-775	SNG-776	SNG-777	SNG-778
14	SNG-779	SNG-780	SNG-781	SNG-782	SNG-783	SNG-784
15	SNG-785	SNG-786	SNG-787	SNG-788	SNG-789	SNG-790
16	SNG-791	SNG-792	SNG-793	SNG-794	SNG-795	SNG-796
17	SNG-797	SNG-798	SNG-799	SNG-800	SNG-801	SNG-802
18	SNG-803	SNG-804	SNG-805	SNG-806	SNG-807	SNG-808
19	SNG-809	SNG-810	SNG-811	SNG-812	SNG-813	SNG-814
20	SNG-815	SNG-816	SNG-817	SNG-818	SNG-819	SNG-820
21	SNG-821	SNG-822	SNG-823	SNG-824	SNG-825	SNG-826
22	SNG-827	SNG-828	SNG-829	SNG-830	SNG-831	SNG-832
23	SNG-833	SNG-834	SNG-835	SNG-836	SNG-837	SNG-838
24	SNG-839	SNG-840	SNG-841	SNG-842	SNG-843	SNG-844
25	SNG-845	SNG-846	SNG-847	SNG-848	SNG-849	SNG-850
26	SNG-851	SNG-852	SNG-853	SNG-854	SNG-855	SNG-856
27	SNG-857	SNG-858	SNG-859	SNG-860	SNG-861	SNG-862
28	SNG-863	SNG-864	SNG-865	SNG-866	SNG-867	SNG-868
29	SNG-869	SNG-870	SNG-871	SNG-872	SNG-873	SNG-874
30	SNG-875	SNG-876	SNG-877	SNG-878	SNG-879	SNG-880

SAFETY RELATED VALVE GROUP IDENTIFICATION CHART

ACCUM. NO.	I	II	III	IV	V	VI	VII	VIII
A	SCC-F12A	SCC-F12B	SCC-F12C	SCC-F12D	SCC-F12E	SCC-F12F	SCC-F12G	SCC-F12H
B	SCC-F13A	SCC-F13B	SCC-F13C	SCC-F13D	SCC-F13E	SCC-F13F	SCC-F13G	SCC-F13H
C	SCC-F14A	SCC-F14B	SCC-F14C	SCC-F14D	SCC-F14E	SCC-F14F	SCC-F14G	SCC-F14H
D	SCC-F15A	SCC-F15B	SCC-F15C	SCC-F15D	SCC-F15E	SCC-F15F	SCC-F15G	SCC-F15H
E	SCC-F16A	SCC-F16B	SCC-F16C	SCC-F16D	SCC-F16E	SCC-F16F	SCC-F16G	SCC-F16H
F	SCC-F17A	SCC-F17B	SCC-F17C	SCC-F17D	SCC-F17E	SCC-F17F	SCC-F17G	SCC-F17H
G	SCC-F18A	SCC-F18B	SCC-F18C	SCC-F18D	SCC-F18E	SCC-F18F	SCC-F18G	SCC-F18H
H	SCC-F19A	SCC-F19B	SCC-F19C	SCC-F19D	SCC-F19E	SCC-F19F	SCC-F19G	SCC-F19H
I	SCC-F20A	SCC-F20B	SCC-F20C	SCC-F20D	SCC-F20E	SCC-F20F	SCC-F20G	SCC-F20H
J	SCC-F21A	SCC-F21B	SCC-F21C	SCC-F21D	SCC-F21E	SCC-F21F	SCC-F21G	SCC-F21H
K	SCC-F22A	SCC-F22B	SCC-F22C	SCC-F22D	SCC-F22E	SCC-F22F	SCC-F22G	SCC-F22H
L	SCC-F23A	SCC-F23B	SCC-F23C	SCC-F23D	SCC-F23E	SCC-F23F	SCC-F23G	SCC-F23H
M	SCC-F24A	SCC-F24B	SCC-F24C	SCC-F24D	SCC-F24E	SCC-F24F	SCC-F24G	SCC-F24H
N	SCC-F25A	SCC-F25B	SCC-F25C	SCC-F25D	SCC-F25E	SCC-F25F	SCC-F25G	SCC-F25H
O	SCC-F26A	SCC-F26B	SCC-F26C	SCC-F26D	SCC-F26E	SCC-F26F	SCC-F26G	SCC-F26H
P	SCC-F27A	SCC-F27B	SCC-F27C	SCC-F27D	SCC-F27E	SCC-F27F	SCC-F27G	SCC-F27H
Q	SCC-F28A	SCC-F28B	SCC-F28C	SCC-F28D	SCC-F28E	SCC-F28F	SCC-F28G	SCC-F28H
R	SCC-F29A	SCC-F29B	SCC-F29C	SCC-F29D	SCC-F29E	SCC-F29F	SCC-F29G	SCC-F29H
S	SCC-F30A	SCC-F30B	SCC-F30C	SCC-F30D	SCC-F30E	SCC-F30F	SCC-F30G	SCC-F30H

UNCONTROLLED - NOT TO BE USED FOR QUALITY AFFECTING ACTIVITIES

SEISMIC CLASS I

SEISMIC CLASS II

NOTES:  
1. FOR NOTES AND REFERENCE DRAWINGS SEE G-166 SH1

DCN'S  
Applicable  
MP-1357  
MP-1035  
MP-1035/1  
MP-1035/2  
MP-1035/3

TI APERTURE CARD

NUCLEAR SAFETY RELATED

6	1/18/54	INC-121(D) DCN-MP-845	RL	G.B.	20	2000	2000
7	4/9/54	INC-121(D) DCN-MP-855	FV	G.B.	20	2000	2000
8	5/21/54	R-1035H PE NO 20958	AS	G.B.	20	2000	2000
5	3-4-54	INC-121(D) DCN-MP-845	E.S.	J.H.	20	2000	2000
4	1-17-54	INC-121(D) DCN-MP-217	CV	E.S.	20	2000	2000
3	1/28/54	INC-121(D) DCN-MP-568	G.B.	A.S.	20	2000	2000
2	1/14/54	INC-121(D) DCN-MP-845	AS	G.B.	20	2000	2000
1	1/1/54	INC-121(D) DCN-MP-845	G.B.	J.H.	20	2000	2000

INCORPORATED  
LOUISIANA POWER & LIGHT COMPANY  
WATERFORD S.E.S. UNIT NO. 3  
1977-1965 MW INSTALLATION  
FLOW DIAGRAM  
NO. 142, CO2 SYSTEMS  
SCALE NONE  
DATE 3-21-50  
LOU-1564  
G-166  
SHEET 2 OF 2

34"

8416090197

PDR RIDS

