

INFORMATION:
THIS DOCUMENT IS
SUBJECT TO REVISION
WITHOUT NOTIFICATION
TO THE USER OR THIS
COPY
TERA
APERTURE
CARD

- NOTES:
1. THIS LOGIC IS APPLICABLE TO THE FOLLOWING:
- | SERVICE | CONTROL RM. SW. LOCATION | TRAIN | MECHANICAL EQUIP. NO. | ELECTRICAL REF. DWG. NO. |
|------------------------|--------------------------|-------|-----------------------|--------------------------|
| CHILLED WATER PUMP IIA | ZCP-001 | A | 3-VII-1-V-PAC01 | 1-E-7424 |
| CHILLED WATER PUMP IIB | ZCP-002 | B | 3-VII-1-V-PAC02 | 1-E-7425 |
| CHILLED WATER PUMP IIC | ZCP-003 | C | 3-VII-1-V-PAC03 | 1-E-7426 |
2. TRAIN B SEE I-2-3601 SHT. 20, CO-ORD (G-4)
 TRAIN C SEE I-2-3602 SHT. 20, CO-ORD (G-4)
 3. TRAIN B SEE I-2-3601, SHT. 20, CO-ORD (G-8)
 TRAIN C SEE I-2-3602, SHT. 20, CO-ORD (G-8)
 4. TRAIN B SEE I-2-3680 SHT. 6, CO-ORD (B-5)
 TRAIN C SEE I-2-3680 SHT. 6, CO-ORD (C-8)

GENERAL NOTE:
THIS DRAWING REPRESENTS FUNCTIONAL REQUIREMENTS ONLY. REFER TO ELECTRICAL REFERENCE DRAWING FOR HARDWARE IMPLEMENTATION.

DATE	DESCRIPTION	BY	CHK	PROJ. ENG.	PROJ. MGR.	DATE	DESCRIPTION	BY	CHK	PROJ. ENG.	PROJ. MGR.	D.Y.
D 5/78	REVISED AS NOTED	AKK	AKK	AKK	AKK							
C 9/77	ISSUED FOR USE	AKK	AKK	AKK	AKK							
B 4/77	EXTERNAL REVIEW; REVISED AS NOTED	AKK	AKK	AKK	AKK							
A 1/77	INITIAL REVIEW	AKK	AKK	AKK	AKK							

PKG. NO. 133 AREA 102

Brown & Root Inc.
ENGINEERS-CONSTRUCTORS
HOUSTON, TEXAS

SOUTH TEXAS PROJECT

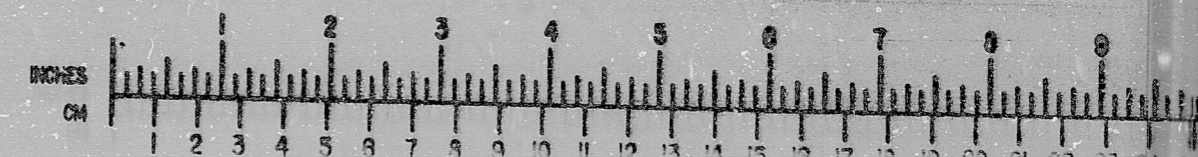
DRAWING TITLE: ELEC. AUX. BLDG. & CONTROL RM. HVAC CHILLED WTR. PUMPS LOGIC DIAGRAM SYSTEM: V-II

CONTRACT NO. SCALE: CR-0241 NA

DRAWING NO. 4V-11 I-2-3460E SHT. 1

PRELIMINARY REVIEW USE CONSTRUCTION

BROWN & ROOT INC.
MICROFILM SERVICES



FRIDAY, OCT. 3 1978

RIDS

8112090593

