

17"

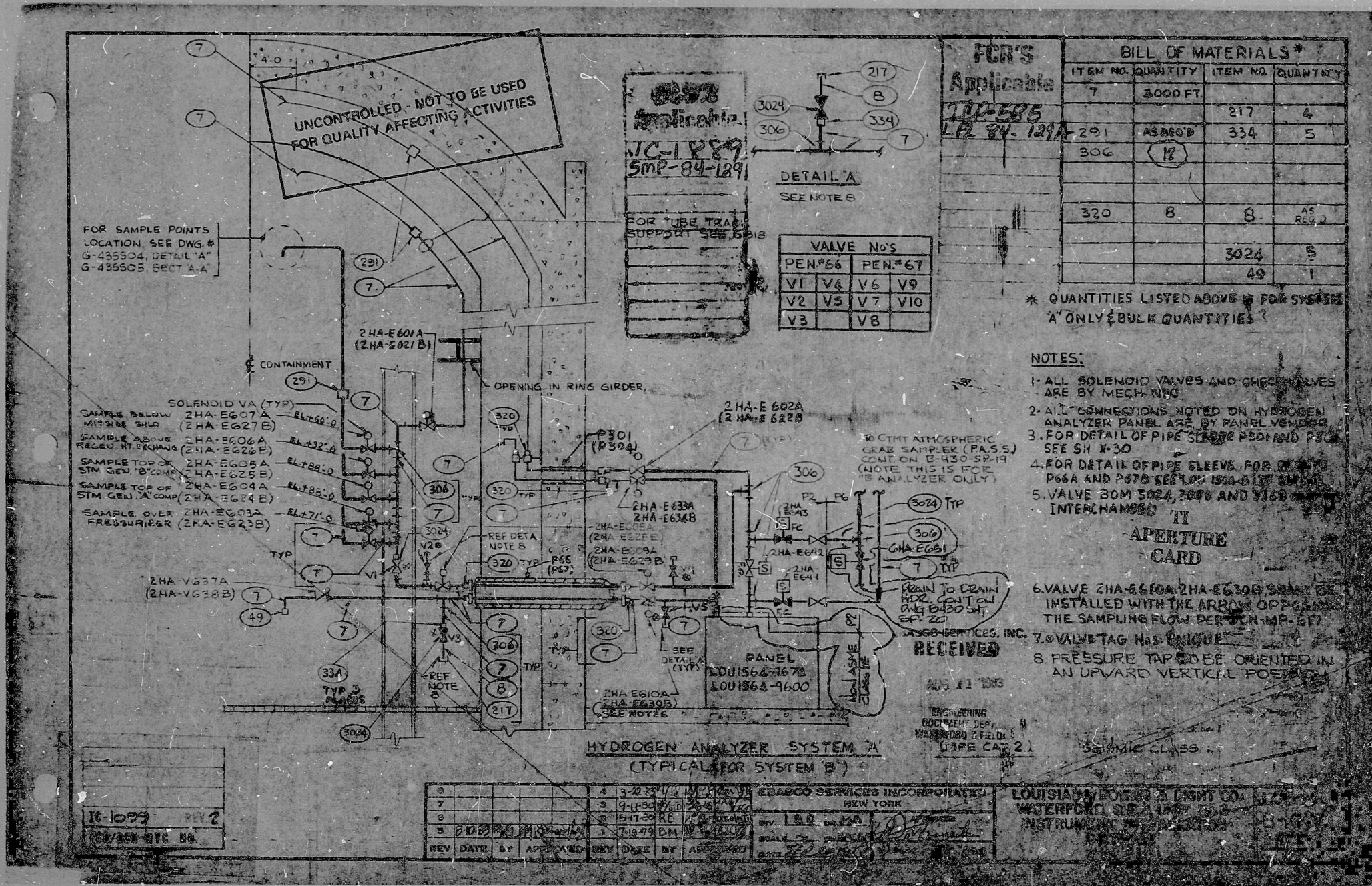
11"

5'8"

17"

11"

5'8"



UNCONTROLLED - NOT TO BE USED FOR QUALITY AFFECTING ACTIVITIES

FOR SAMPLE POINTS LOCATION, SEE DWG # G-435504, DETAIL 'A' G-435505, SECT 'A-A'

FOR TUBE TRAIL SUPPORT SEE E-018

DETAIL 'A' SEE NOTES

VALVE NO'S			
PEN#66		PEN#67	
V1	V4	V6	V9
V2	V5	V7	V10
V3		V8	

FOR'S Applicable

11-585
LB 84-129A

BILL OF MATERIALS*			
ITEM NO.	QUANTITY	ITEM NO.	QUANTITY
7	300 FT		
217		217	4
291	AS REQ'D	334	5
306	(12)		
320	8	8	AS REQ'D
		3024	5
		49	1

* QUANTITIES LISTED ABOVE IS FOR SYSTEM 'A' ONLY BULK QUANTITIES

- NOTES:
1. ALL SOLENOID VALVES AND CHECK VALVES ARE BY MECH. INC.
 2. ALL CONNECTIONS NOTED ON HYDROGEN ANALYZER PANEL ARE BY PANEL VENDOR.
 3. FOR DETAIL OF PIPE SLEEVES P300 AND P301 SEE SH X-30.
 4. FOR DETAIL OF PIPE SLEEVES FOR P66A AND P67B SEE LON 1500-B-12-10.
 5. VALVE BOM 5024, 3024 AND 3024 INTERCHANGEABLE.
 6. VALVE ZHA-E610A, ZHA-E610B SHALL BE INSTALLED WITH THE ARROW OPPOSITE THE SAMPLING FLOW PER PEN-MP-617.
 7. VALVE TAG HAS UNIQUE.
 8. PRESSURE TAP TO BE ORIENTED IN AN UPWARD VERTICAL POSITION.

APERTURE CARD

RECEIVED

HYDROGEN ANALYZER SYSTEM A (TYPICAL FOR SYSTEM B)

11-1099 REV 2

REV	DATE	BY	APP'D	REV	DATE	BY	APP'D
1	11-10-63	JMS		1	11-10-63	JMS	
2	11-10-63	JMS		2	11-10-63	JMS	
3	11-10-63	JMS		3	11-10-63	JMS	
4	11-10-63	JMS		4	11-10-63	JMS	

LOUISIANA POWER & LIGHT CO. INSTRUMENTS

8'5"

11"

17"

8'5"

11"

17"

~~8410090196~~ 27

To be Cycled

PDR RIDS

8410090196

