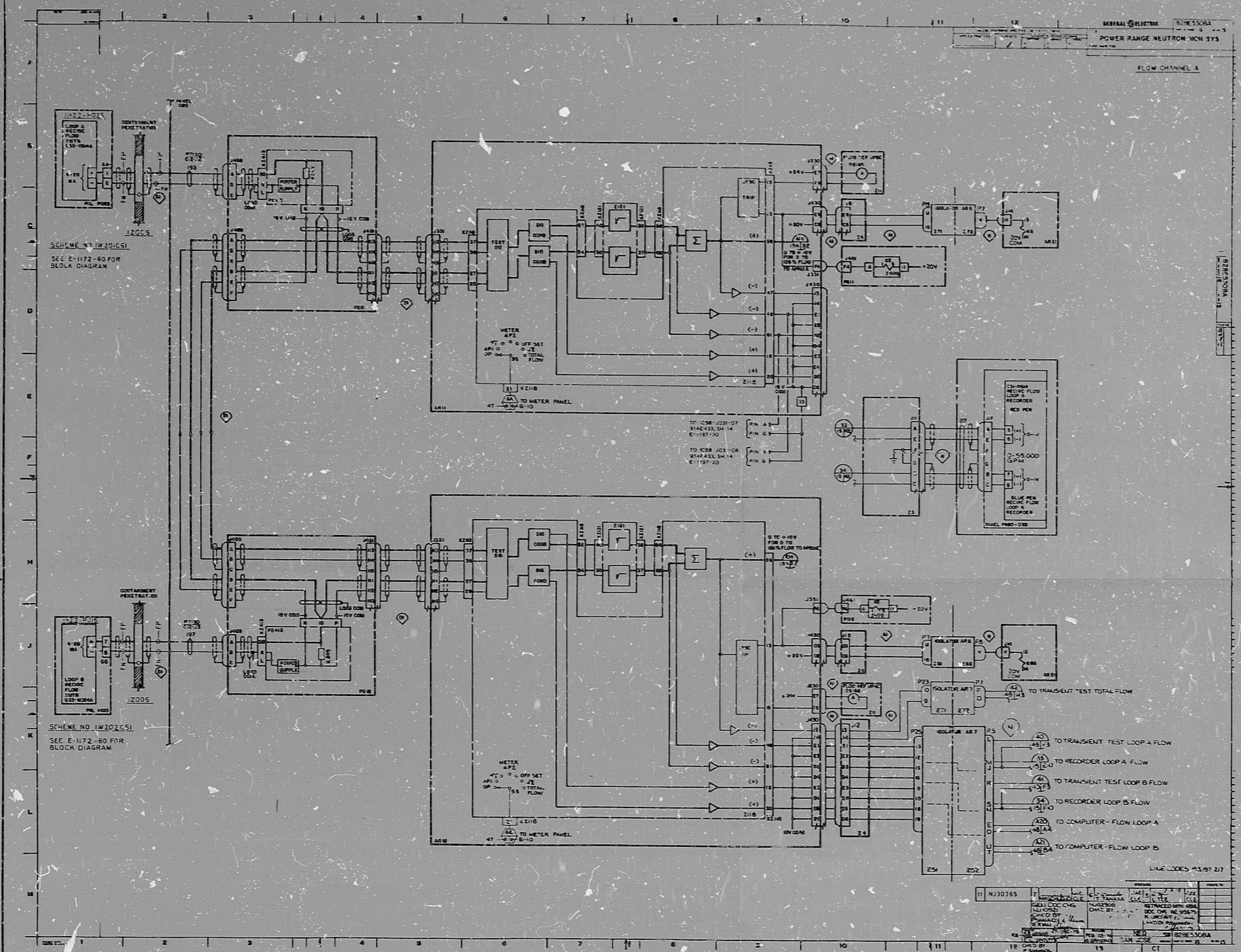


SCALING RULES
MPL No 1C511035E E-1172-15

SIZE E

NOTE: THE INFORMATION REPRODUCED FROM THE ORIGINAL GENERAL ELECTRIC DRAWING MAY NOT BE COMPLETELY LEGIBLE.

NOTE
1 THIS DRAWING HAS BEEN PREPARED FOR THE PURPOSE OF THE ADDITION OF INTERFACED INFORMATION SUCH AS CABLE NUMBER, WIRE NUMBER, CABLE CODES, AND FROM TO LOCATIONS. THE ELEMENTARY INFORMATION REPRODUCED ON THIS DRAWING HAS BEEN PREPARED BY GENERAL ELECTRIC AND IS SOLELY RESPONSIBLE FOR ITS DESIGN, NO CHANGES TO THE ELEMENTARY DESIGN OR FUNCTION SHALL BE PERMITTED WITHOUT THE EXPRESS WRITTEN APPROVAL OF GENERAL ELECTRIC.
2 FOR GE PREFIX SEE GE NOTE 1 E-1172-01 ALL DEVICES, COMPUTER ADDRESSES AND ANNUNCIATORS ARE PREFIXED BY 1C51 UNLESS OTHERWISE NOTED.



| NO. | DESCRIPTION | DATE | BY | CHKD. |
|-----|-------------|----------|-----------|-------|
| 11 | NJ30365 | 11/19/72 | J. J. ... | ... |

PRC APERTURE CARD

TURNED OVER TO MPL FOR DESIGN CONTROL SYSTEM C51

INFORMATION ONLY

8307180250

| | | | | |
|-------------------|------------------------|-------------------|-------------------|-------------------|
| INCORP GE REV | REV D PER FOR 11/11/72 | REV C | REV B | REV A |
| REVISED / REDRAWN | REVISED / REDRAWN | REVISED / REDRAWN | REVISED / REDRAWN | REVISED / REDRAWN |
| ISSUED FOR CONST. | ISSUED FOR CONST. | ISSUED FOR CONST. | ISSUED FOR CONST. | ISSUED FOR CONST. |

BECHTEL
GARDENERSBURG, MARYLAND
MISSISSIPPI POWER & LIGHT COMPANY
BRAND NEW NUCLEAR STATION
UNIT 1

SCHEMATIC DIAGRAM
POWER RANGE NEUTRON MON SYSTEM
FLOW CHANNEL A
UNIT 1

| | | | | | |
|----------|--------------|------------------|---------------|---------------------|--------|
| SU SCOPE | DATE INITIAL | MPL No 1C511035E | JOB No. 9645- | DEPT. No. E-1172-15 | REV. 4 |
|----------|--------------|------------------|---------------|---------------------|--------|

17
11
8.5
8.5
11
8.5
17

17
11
8.5
8.5
11
8.5
17

I certify that the data contained in this drawing is the work of the designer and is true and correct as shown, and that it is the property of the company.

RIDS

8307180250

