

INFORMATION
THIS DOCUMENT IS
SUBJECT TO REVISION
WITHOUT NOTIFICATION
TO THE USER OR THIS
COPY

TERA
APERTURE
CARD

NOTES:

1. THIS LOGIC IS APPLICABLE TO THE FOLLOWING:

SERVICE	CONTROL RM TRAIN SWITCH LOG.	MECHANICAL EQUIP. NO.	ELECTRICAL REF. DWG. NO.
HVAC EXHAUST AIR FAN 11A	ZCP-001	A	8-VII-V-FN010 1-E-7418
HVAC EXHAUST AIR FAN 11B	ZCP-002	B	8-VII-V-FN011 1-E-7419
HVAC EXHAUST AIR FAN 11C	ZCP-003	C	8-VII-V-FN012 1-E-7420

2. TRAIN B SEE 1-Z-3601 SHT. 20, CO-ORD G-10.
TRAIN C SEE 1-Z-3602 SHT. 20, CO-ORD G-10

GENERAL NOTE:
THIS DRAWING REPRESENTS FUNCTIONAL REQUIREMENTS ONLY. REFER TO ELECTRICAL REFERENCE DRAWING FOR HARDWARE IMPLEMENTATION.

DATE	DESCRIPTION	BY	CHK	PROJ. ENG.	PROJ. MGR.	D.V.	NO. DATE	DESCRIPTION	BY	CHK	PROJ. ENG.	PROJ. MGR.	D.V.	NO. DATE
12/77	REVISED AS NOTED; ISSUED FOR USE													
8/77	ISSUED FOR USE													
8/77	EXTENSION PROVIDED; PERMISSIVE AD. NETWORK													
1/78	INITIAL REVISIONS													

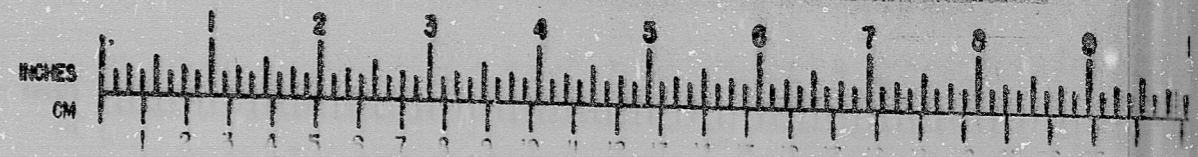
Brown & Root Inc.
ENGINEERS-CONSTRUCTORS
HOUSTON, TEXAS

SOUTH TEXAS PROJECT

DRAWING TITLE
ELEC. AUX. BLDG. & CONTROL ROOM EXHAUST AIR FANS LOGIC DIAGRAM SYSTEM I-V-II

PKG. NO. 133 AREA 102
CONTRACT NO. SCALE CR-0241 NA
DRAWING NO. SV-11 1-Z-3460 D SHT. 4
OCT 15 1978
 PRELIMINARY REVIEW USE CONSTRUCTION

BROWN & ROOT INC.
MICROFILM SERVICES



FRIDAY, OCT. 4 1978

RIDS

8112090562

