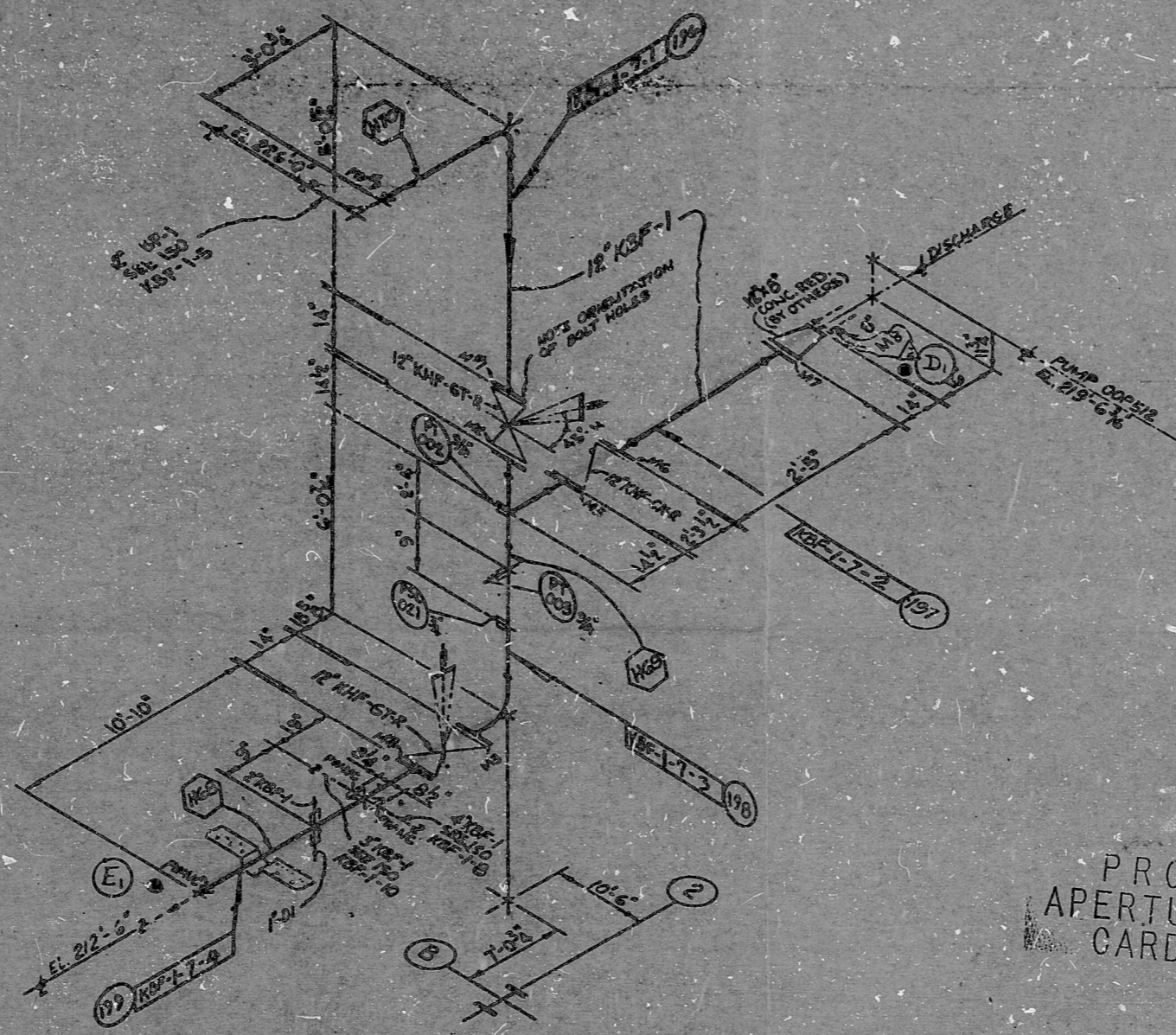


38 L.F.



REV. 1 NOTE:
 ADDED PIPE SUPPLIERS, SPOOL, FWP & M NOG.
 ISSUED FOR CONSTRUCTION

REV. 2 NOTE:
 ADDED MECHANICAL JOINT NUMBER
 PER FIELD REQUEST



REFERENCE DRAWINGS

- M-22 P&ID
 - M-5101 PIPING PLAN - CIRC. WATER PUMP HOUSE AREA
- NO STRESS ISO REQUIRED

PRC APERTURE CARD

NO.	DATE	DESCRIPTION	BY	CHECKED	DATE	APPROVED
1	10/21/57	ISSUED FOR FABRICATION	J.P.	J.P.	10/21/57	J.P.

REVISED BY: J.P.
 OCT 21 1957 NEW YORK
 TEXAS PIPE BENDING CO.

- 90° Elbow = 1 x 18 = 18'
 - Tee (Flow at 90°) = 1 x 60 = 60'
 - Gate Valve = 1 x 6 = 6'
 - Pipe = 22'
- 106 FT.

Fabricated By: TEXAS PIPE BENDING COMPANY

JOB # 302F
 SHT. # 196-199
 I.M. # 225 & 224

8307150157

BECHTEL SAN FRANCISCO			
LIMERICK GENERATING STATION UNITS 1 & 2 PHILADELPHIA ELECTRIC COMPANY			
ISOMETRIC - CIRC. WATER PUMP HSE. FIRE PROTECTION			
ISS No.	REV.	DESCRIPTION	DATE
8031	1-7	KBF-1-7	2

11
 11
 8.5
 8.5"
 11"
 7"

RIDS

8307150157

