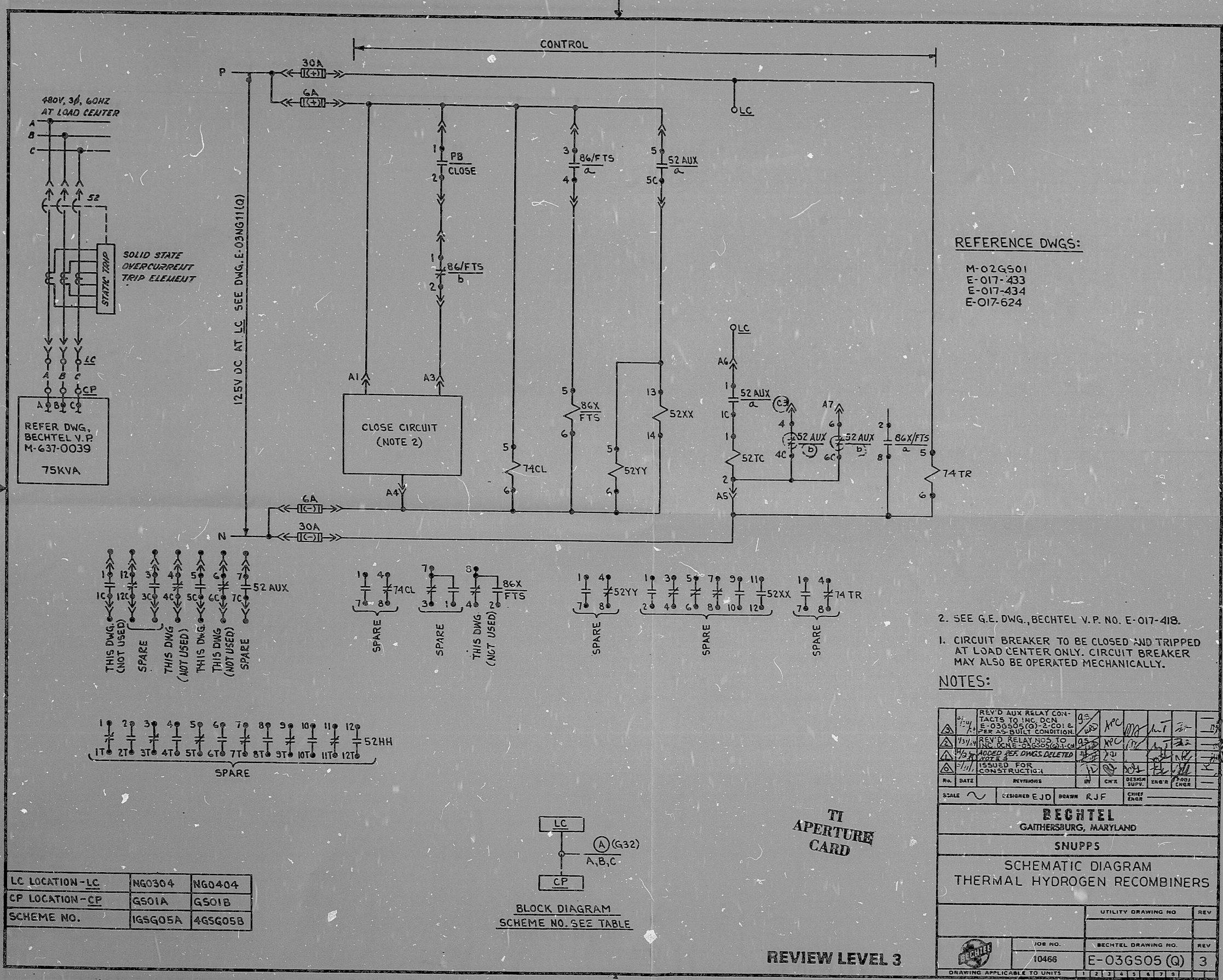


This drawing and the design it covers is the property of the Utilities which are participating in the SNUPPS Project. It is loaned on the borrower's express agreement that it will not be reproduced, copied, loaned, exhibited, or used except in the limited way and private use permitted by written consent given by the SNUPPS Utilities to the borrower.



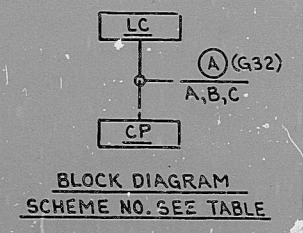
REFERENCE DWGS:  
 M-02G501  
 E-017-433  
 E-017-434  
 E-017-624

- 2. SEE G.E. DWG., BECHTEL V.P. NO. E-017-418.
- 1. CIRCUIT BREAKER TO BE CLOSED AND TRIPPED AT LOAD CENTER ONLY. CIRCUIT BREAKER MAY ALSO BE OPERATED MECHANICALLY.

NOTES:

REV'D	AUX RELAY CON-TACTS TO INC. DCN	9/2				
REV'D	E-03G505(Q)-2 COIL & 71 PER AS-BUILT CONDITION	9/2				
REV'D	RELAY NOS. TO INC. DCN	9/2				
ADDED	REV. DWGS DELETED	9/2				
ISSUED	FOR CONSTRUCTION	9/2				
RA	DATE	REVISED	BY	CHK'D	DESIGN SUPV.	ENGR'S
SCALE	DESIGNED EJD	DRAWN R.J.F.				
<b>BECHTEL</b> GAITHERSBURG, MARYLAND						
SNUPPS						
SCHEMATIC DIAGRAM THERMAL HYDROGEN RECOMBINERS						
			UTILITY DRAWING NO.		REV.	
			JOB NO.	BECHTEL DRAWING NO.	REV.	
			10466	E-03G505 (Q)	3	
DRAWING APPLICABLE TO UNITS						

LC LOCATION - LC	NG0304	NG0404
CP LOCATION - CP	G501A	G501B
SCHEME NO.	1G5G05A	4G5G05B



REVIEW LEVEL 3

I certify that the image contained on this frame was made in the normal and regular course of business, on the date stated below and that it is an accurate reproduction of the document(s) submitted to Micrographics.  
 DATE 1/14/74 OPERATOR Mark Cannon



8410090145

PDR RIDS

