

17"

11"

8.5"

8.5"

11"

17"

17"

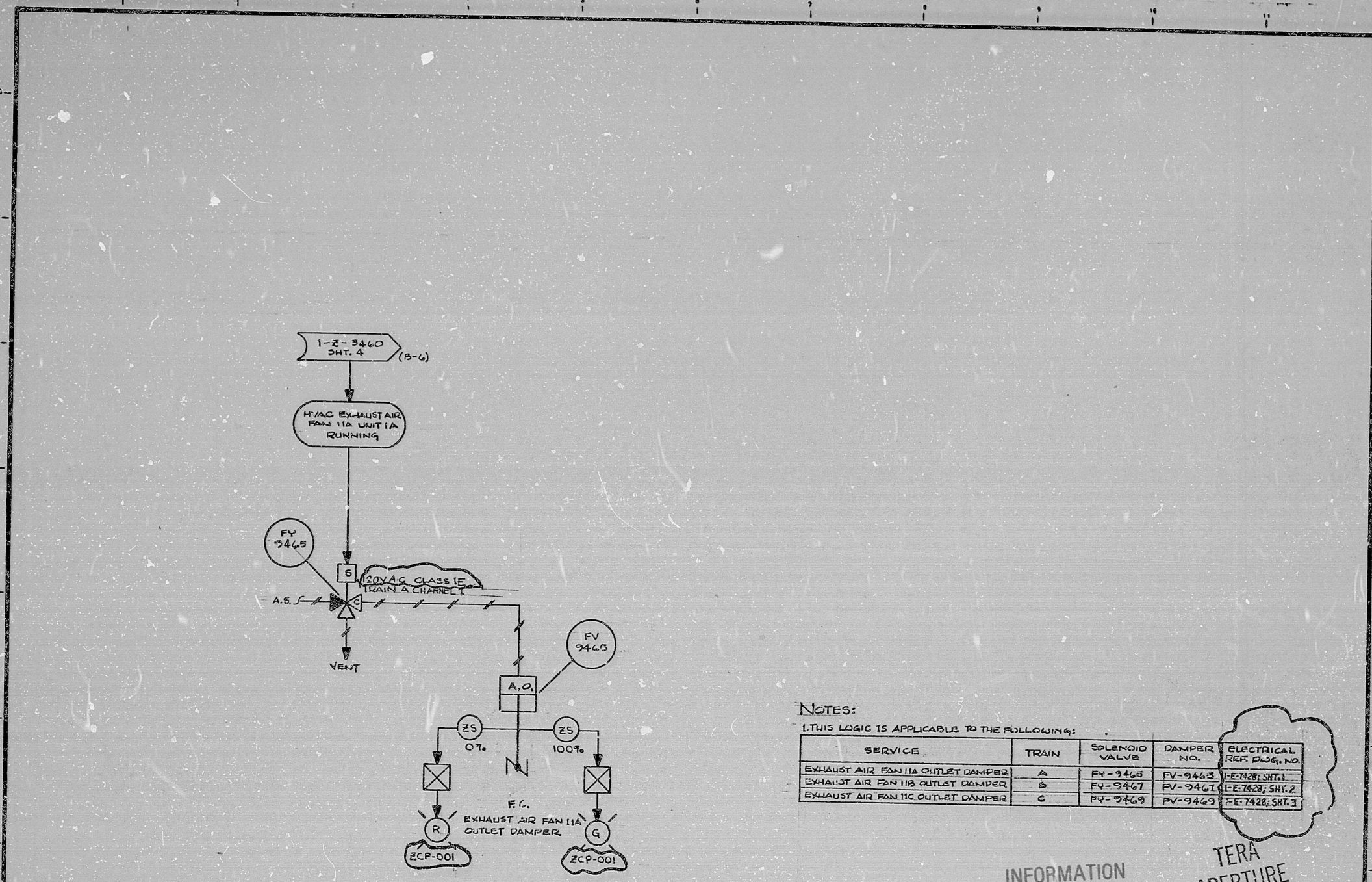
11"

8.5"

8.5"

11"

17"



NOTES:
[THIS LOGIC IS APPLICABLE TO THE FOLLOWING:]

SERVICE	TRAIN	SOLENOID VALVE	DAMPER NO.	ELECTRICAL REF. Dwg. NO.
EXHAUST AIR FAN 11A OUTLET DAMPER	A	FV-9465	FV-9465	FE-7428; SHT. 1
EXHAUST AIR FAN 11B OUTLET DAMPER	B	FV-9467	FV-9467	FE-7428; SHT. 2
EXHAUST AIR FAN 11C OUTLET DAMPER	C	FV-9469	FV-9469	FE-7428; SHT. 3

GENERAL NOTE:
THIS DRAWING REPRESENTS FUNCTIONAL REQUIREMENTS ONLY. REFER TO ELECTRICAL REFERENCE DRAWING FOR HARDWARE IMPLEMENTATION.

INFORMATION
THIS DOCUMENT IS SUBJECT TO REVISION WITHOUT NOTIFICATION TO THE USER OF THIS COPY

TERA APERTURE CARD

NO.	DATE	DESCRIPTION	BY	CHK	PROJ. ENG.	PROJ. MGR.	NO.	DATE	DESCRIPTION	BY	CHK	PROJ. ENG.	PROJ. MGR.	D.V.
D 1477		REVISED AS NOTED, ISSUED FOR USE						F 3/73	REVISED AS NOTED, ISSUED FOR USE					
C 2777		ISSUED FOR USE						E 4/73	REVISED AS NOTED					
B 2177		EXTERNAL REVIEW; REVISED FAN NO.												
A 1076		INITIAL REVIEW												

Brown & Root Inc.
ENGINEERS-CONSTRUCTORS
HOUSTON, TEXAS

SOUTH TEXAS PROJECT

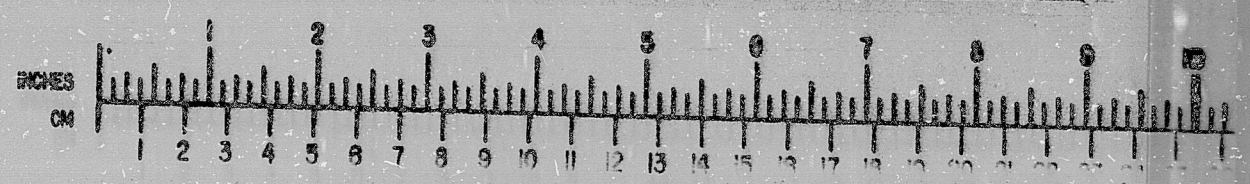
DRAWING TITLE
ELEC. AUX. BLDG. & CONT. RM.
EXHAUST AIR FANS OUTLET DAMPS LOGIC DIAGRAM
SYSTEM: V-11

PKG. NO. 133 AREA 102
CONTRACT NO. CR-0241 SCALE NA
DRAWING NO. 21V-11
1-2-3463F
SHT. 7

PRELIMINARY REVIEW USE CONSTRUCTION

BROWN & ROOT INC.
MICROFILM SERVICES

FRIDAY, OCT. 5 1973



RIDS

8112090460

