

NOTES:  
1. THIS LOGIC IS APPLICABLE TO THE FOLLOWING:

SERVICE	CONTROL RM SWITCH LOC.	TRAIN	DAMPER NO.	SOLENOID VALVE	ELECTRICAL REF. DWG. NO.
MAKE-UP UNIT 11A M/JU AIR LINE DAMPER	ZCP-001	B	FV-9339C	FY-9339C	I-E-7391; SHT. 2
MAKE-UP UNIT 11A M/JU AIR LINE DAMPER	ZCP-001	A	FV-9339D	FY-9339D	I-E-7391; SHT. 1
MAKE-UP UNIT 11B M/JU AIR LINE DAMPER	ZCP-002	C	FV-9365C	FY-9365C	I-E-7391; SHT. 3
MAKE-UP UNIT 11B M/JU AIR LINE DAMPER	ZCP-002	B	FV-9365D	FY-9365D	I-E-7391; SHT. 2
MAKE-UP UNIT 11C M/JU AIR LINE DAMPER	ZCP-003	A	FV-9391C	FY-9391C	I-E-7391; SHT. 1
MAKE-UP UNIT 11C M/JU AIR LINE DAMPER	ZCP-003	C	FV-9391D	FY-9391D	I-E-7391; SHT. 3

2. TRAIN C SEE I-2-3680 SHT. 6 CO-ORD (A-11)

GENERAL NOTE:  
THIS DRAWING REPRESENTS FUNCTIONAL REQUIREMENTS ONLY. REFER TO ELECTRICAL REFERENCE DRAWING FOR HARDWARE IMPLEMENTATION.

INFORMATION  
THIS DOCUMENT IS SUBJECT TO REVISION WITHOUT NOTIFICATION TO THE USER OF THIS COPY  
TERA APERTURE CARD

C 8/77 REVISED AS NOTED, ISSUED FOR USE		BY: [Signature]		CHK: [Signature]		DATE: [Date]		DESCRIPTION		BY: [Signature]		CHK: [Signature]		DATE: [Date]		DESCRIPTION		BY: [Signature]		CHK: [Signature]		DATE: [Date]		DESCRIPTION	
C 9/77 ISSUED FOR USE		BY: [Signature]		CHK: [Signature]		DATE: [Date]		DESCRIPTION		BY: [Signature]		CHK: [Signature]		DATE: [Date]		DESCRIPTION		BY: [Signature]		CHK: [Signature]		DATE: [Date]		DESCRIPTION	
C 10/77		BY: [Signature]		CHK: [Signature]		DATE: [Date]		DESCRIPTION		BY: [Signature]		CHK: [Signature]		DATE: [Date]		DESCRIPTION		BY: [Signature]		CHK: [Signature]		DATE: [Date]		DESCRIPTION	

PKG. NO. 133 AREA 102

**Brown & Root Inc.**  
ENGINEERS-CONSTRUCTORS  
HOUSTON, TEXAS

**SOUTH TEXAS PROJECT**

DRAWING TITLE: ELEC. AUX. BLDG. & CONT. RM. M/JU AIR LINE DAMPER & MIXING BOX OUTLET SYSTEM: V-II

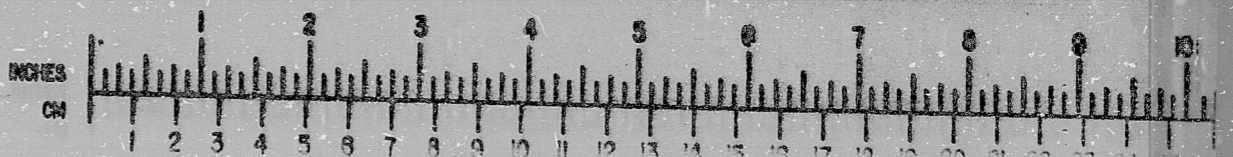
CONTRACT NO. CR-0241 SCALE NA

DRAWING NO. I-2-3463C SHT. 10

PRELIMINARY  REVIEW  USE  CONSTRUCTION

**BROWN & ROOT INC.**  
MICROFILM SERVICES

FRIDAY, OCT. 5 1977



RIDS

8112090450

