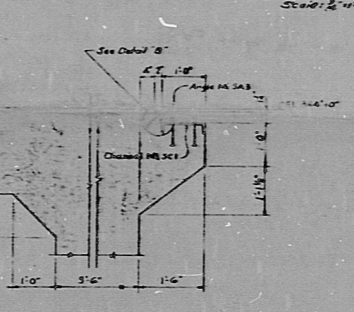
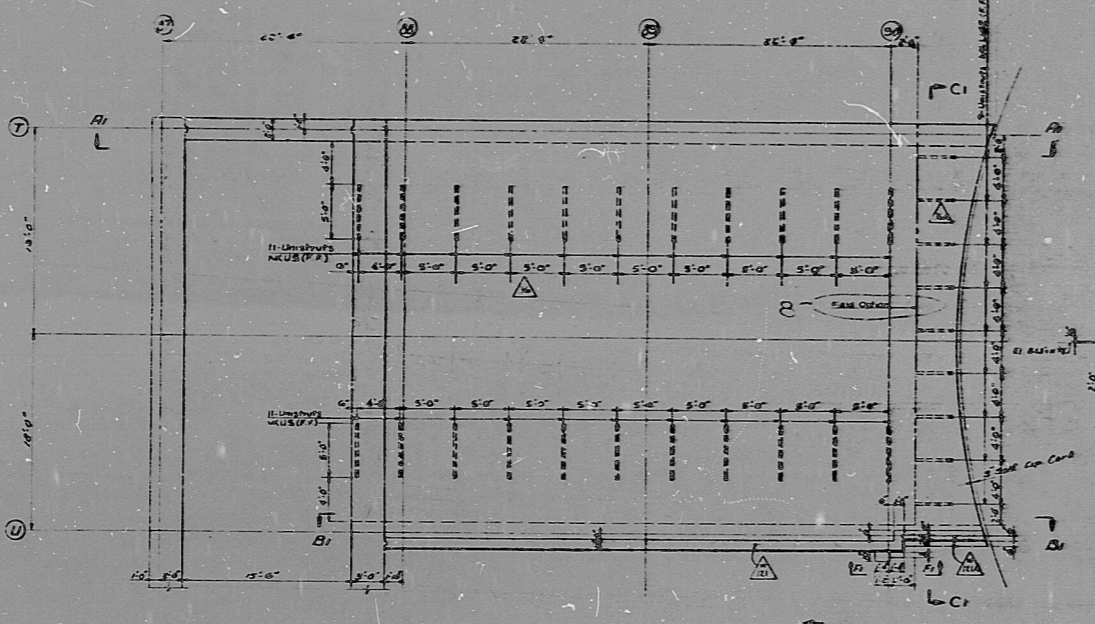
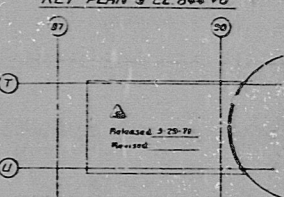
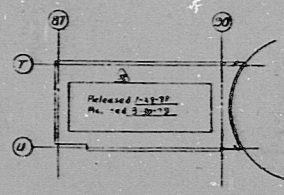
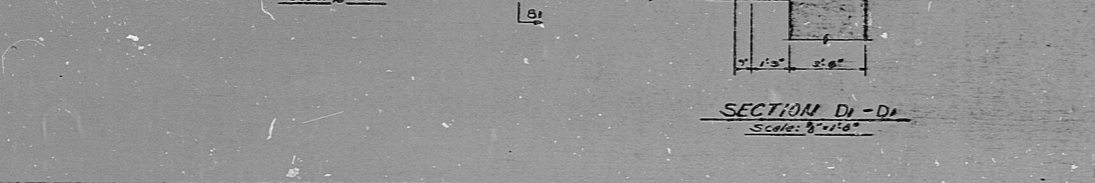
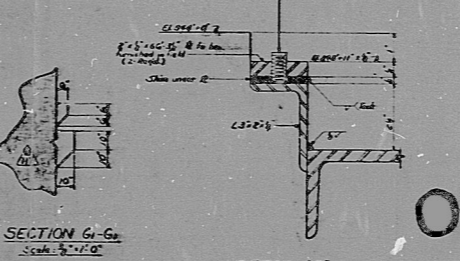
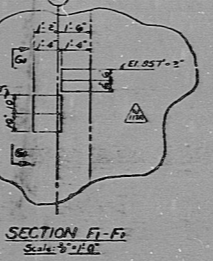
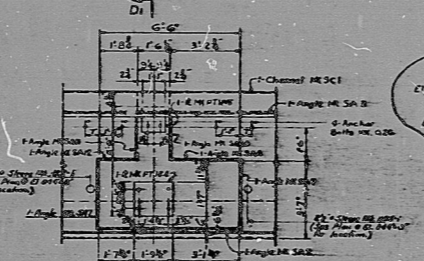
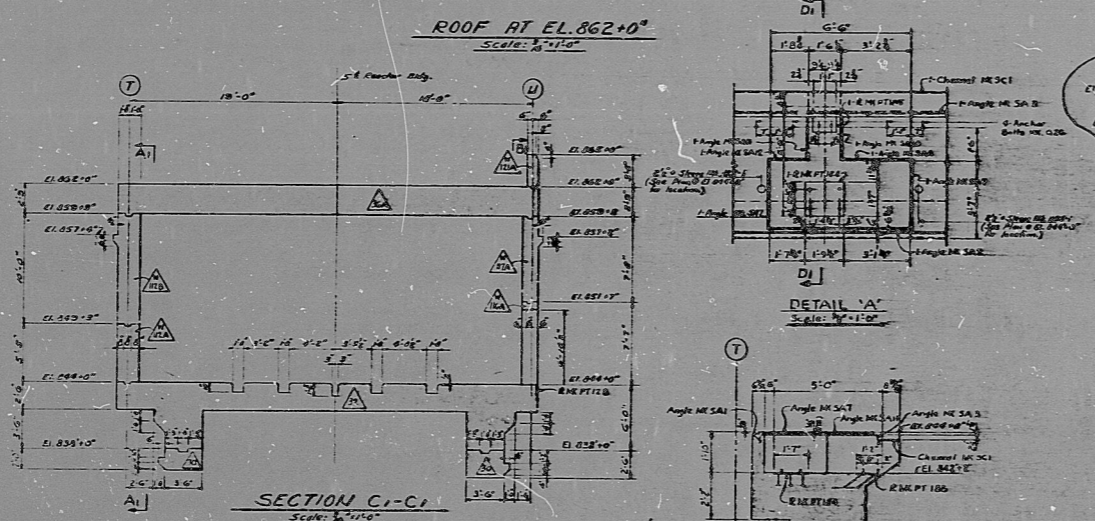


NO.	DATE	BY	CHKD.	APP.
1	10-20-68	J. H. ...	J. H. ...	J. H. ...
2	11-10-68	J. H. ...	J. H. ...	J. H. ...
3	12-10-68	J. H. ...	J. H. ...	J. H. ...
4	1-10-69	J. H. ...	J. H. ...	J. H. ...
5	2-10-69	J. H. ...	J. H. ...	J. H. ...
6	3-10-69	J. H. ...	J. H. ...	J. H. ...
7	4-10-69	J. H. ...	J. H. ...	J. H. ...
8	5-10-69	J. H. ...	J. H. ...	J. H. ...
9	6-10-69	J. H. ...	J. H. ...	J. H. ...
10	7-10-69	J. H. ...	J. H. ...	J. H. ...
11	8-10-69	J. H. ...	J. H. ...	J. H. ...
12	9-10-69	J. H. ...	J. H. ...	J. H. ...
13	10-10-69	J. H. ...	J. H. ...	J. H. ...
14	11-10-69	J. H. ...	J. H. ...	J. H. ...
15	12-10-69	J. H. ...	J. H. ...	J. H. ...



POOR ORIGINAL

PRC APERTURE CARD



- GENERAL NOTES:**
- All concrete to have 3/4" diameter unless noted. Floor surfaces to be trowel finished. Roof surface to be float finished. Rebar 3/8" & 5/8" to be 5000 psi concrete at 28 days.
 - ITEM 8 103-20: Covers the furnishing and fabrication of Miscellaneous Steel as detailed on Dep. O-2154B & O-2155C.
 - ITEM 8 112-25: Covers the furnishing and fabrication of Pipe Stewards 10" as detailed on Dep. O-2154B.
 - ITEM 8 102-25: Covers the furnishing and fabrication of Anchor Bolts 10" as detailed on Dep. O-2154B.

8307080389

REFERENCE LISTINGS

For Spent Fuel Pool Deck, see	Dep. O-2154B & T
For Spent Fuel Pool Deck, see	Dep. O-2154B, A, Y
For Unloading area - Deck, see	Dep. O-2154B & P
For Unloading area - Mezz., see	Dep. O-2154B & R
For Miscellaneous Steel, see	Dep. O-2154B & O-2155C
For Architectural Layout, see	Dep. O-2099A, B, C
For Lighting Layout, see	Dep. O-2149
For Grounding, see	Dep. O-2082

O-2154-U

NO.	DATE	BY	CHKD.	APP.
1	10-20-68	J. H. ...	J. H. ...	J. H. ...
2	11-10-68	J. H. ...	J. H. ...	J. H. ...
3	12-10-68	J. H. ...	J. H. ...	J. H. ...
4	1-10-69	J. H. ...	J. H. ...	J. H. ...
5	2-10-69	J. H. ...	J. H. ...	J. H. ...
6	3-10-69	J. H. ...	J. H. ...	J. H. ...
7	4-10-69	J. H. ...	J. H. ...	J. H. ...
8	5-10-69	J. H. ...	J. H. ...	J. H. ...
9	6-10-69	J. H. ...	J. H. ...	J. H. ...
10	7-10-69	J. H. ...	J. H. ...	J. H. ...
11	8-10-69	J. H. ...	J. H. ...	J. H. ...
12	9-10-69	J. H. ...	J. H. ...	J. H. ...
13	10-10-69	J. H. ...	J. H. ...	J. H. ...
14	11-10-69	J. H. ...	J. H. ...	J. H. ...
15	12-10-69	J. H. ...	J. H. ...	J. H. ...

DUKE POWER COMPANY
OCONEE NUCLEAR STATION - UNITS 1 & 2
AUXILIARY BUILDING - UNIT 3
SPENT FUEL POOL
PLANS & SECTIONS EL. 844'-0" TO EL. 862'-0"
CONCRETE SH-1
O-2154-U
14H-10-2

RIPS

8307080389

