

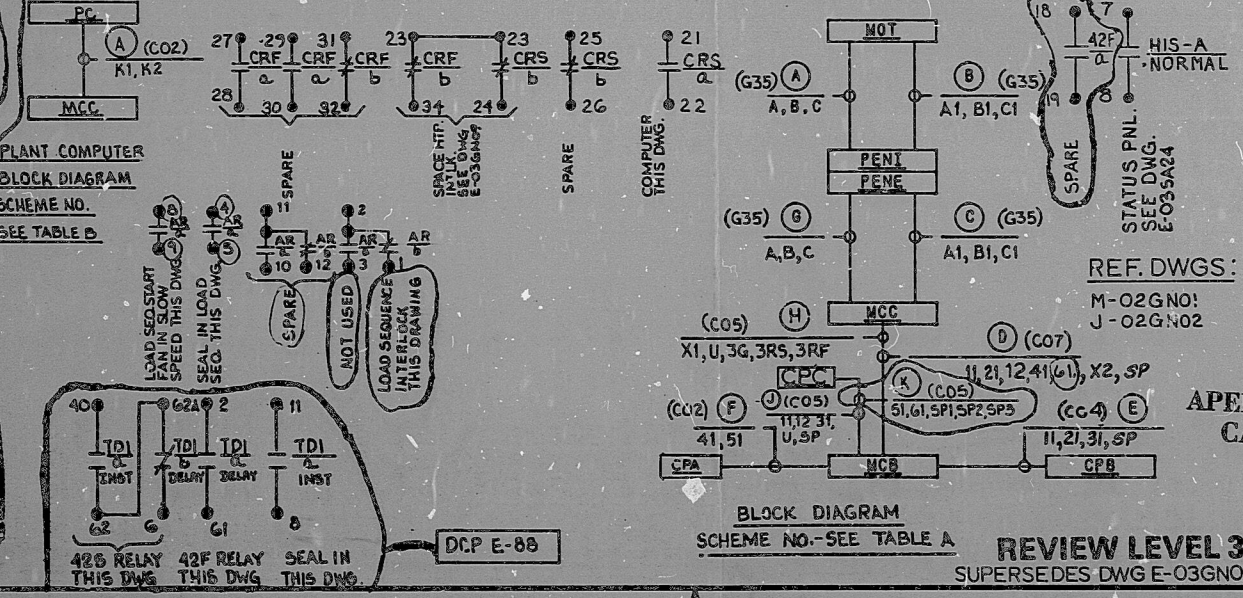
- CONTACT OPENS ON SAFETY INJECTION SIGNAL FROM SSPS RELAY NO. SEE TABLE. REFER WESTINGHOUSE DWG. BECHTEL V.P.M.-767-179.
- CONTACT CLOSING ON LOAD SEQUENCE STEP 7 FOLLOWING A SAFETY INJECTION SIGNAL ALONE OR SAFETY INJECTION SIGNAL AND A LOSS OF OFFSITE POWER. REFER V.P. J-104-0147. SEE TABLE A FOR RELAY NO.
- CONTACT CLOSING ON LOAD SEQUENCE STEP 7 FOLLOWING A LOSS OF OFFSITE POWER. REFER V.P. J-104-0147. SEE TABLE A FOR RELAY NO.
- PUSHING IN ON LIGHT FOR LAMP TEST REVERSES CONTACT POSITIONS.
- SEE DWG. 10466-E-03NG01 FOR INCOMING 480V CABLE AND DETAILS OF PROTECTIVE DEVICES.

TABLE B  
DCP E-34

COMPUTER SCHEME NO.	IGNR02A	IGNR02
COMPUTER REF. DWG. BECHTEL V.P. NO.	J-106-015	J-106-015
COMPUTER POINT	GNQ5	GNQ13
MCC LOCATION - MCC	NGDITAF1	NGDSTAF1
COMPUTER LOC. - PC	RJ157A	RJ159A

TABLE A

RLY NO. (SEE NOTE 3)	K1132	K1113
RLY NO. (SEE NOTE 2)	K1112	K1151
SPACE HTR INTLK	IGNV09A	IGNV09C
HS NO.	GNH35	GNH313
AUX RLY NO. AR	3XGN07	3XGN09
AR LOC. CPC	RP330	RP330
PENETRATION - PEN	ZNE260	ZNE260
SSPS RELAY CONTACT	K616	K616
CONTROL PNL - CPA	S8029C	S8029C
CONTROL PNL - CPB	NF039C	NF039C
HIS NO.	GNH155	GNH153
HIS-A MCC LOC. MCC	NGDITAF1	NGDSTAF1
HIS-A HS LOC. MCB	RLO20	RLO20
MOTOR NO. MOT	DSGN01A	DSGN01C
SCHEME NO.	IGN602A	IGN602C



ISSUED FOR CONSTRUCTION THIS DWG SUPERSEDES DWG E-03GN02 (O) REV 9 FOR CALLAWAY ONLY. REV 9 TO INC. DCH - 03GN02(O) - 1 COL 4 SER 2-58-000A

NO.	DATE	REVISION	BY	CHK	DRG	PAR	APP

SCALE: DESIGNED EJD DRAWN CAD

BECHTEL  
GATHERSBURG, MARYLAND

SNUPPS

TI  
APERTURE  
CARD

UTILITY DRAWING NO. REV

JOB NO. 10488  
DESIGNER DRAWING NO. E-23GN02 (O)  
DAY

1. THIS DRAWING AND THE INFORMATION CONTAINED HEREIN IS THE PROPERTY OF BECHTEL AND IS TO BE USED ONLY FOR THE PROJECT AND SITE SPECIFICALLY IDENTIFIED IN THE TITLE BLOCK. IT IS TO BE KEPT IN THE OFFICE OF THE PROJECT MANAGER AND IS NOT TO BE REPRODUCED OR TRANSMITTED IN ANY FORM OR BY ANY MEANS, ELECTRONIC OR MECHANICAL, INCLUDING PHOTOCOPYING, RECORDING, OR BY ANY INFORMATION STORAGE AND RETRIEVAL SYSTEM.

I certify that the image contained on this frame was made in the normal and regular course of business, on the date stated below and that it is an accurate reproduction of the document(s) submitted to Micrographics.  
DATE 6-25-84 OPERATOR



8410090112

PDR RIDS

