

17"

11"

8.5"

8.5"

11"

17"

17"

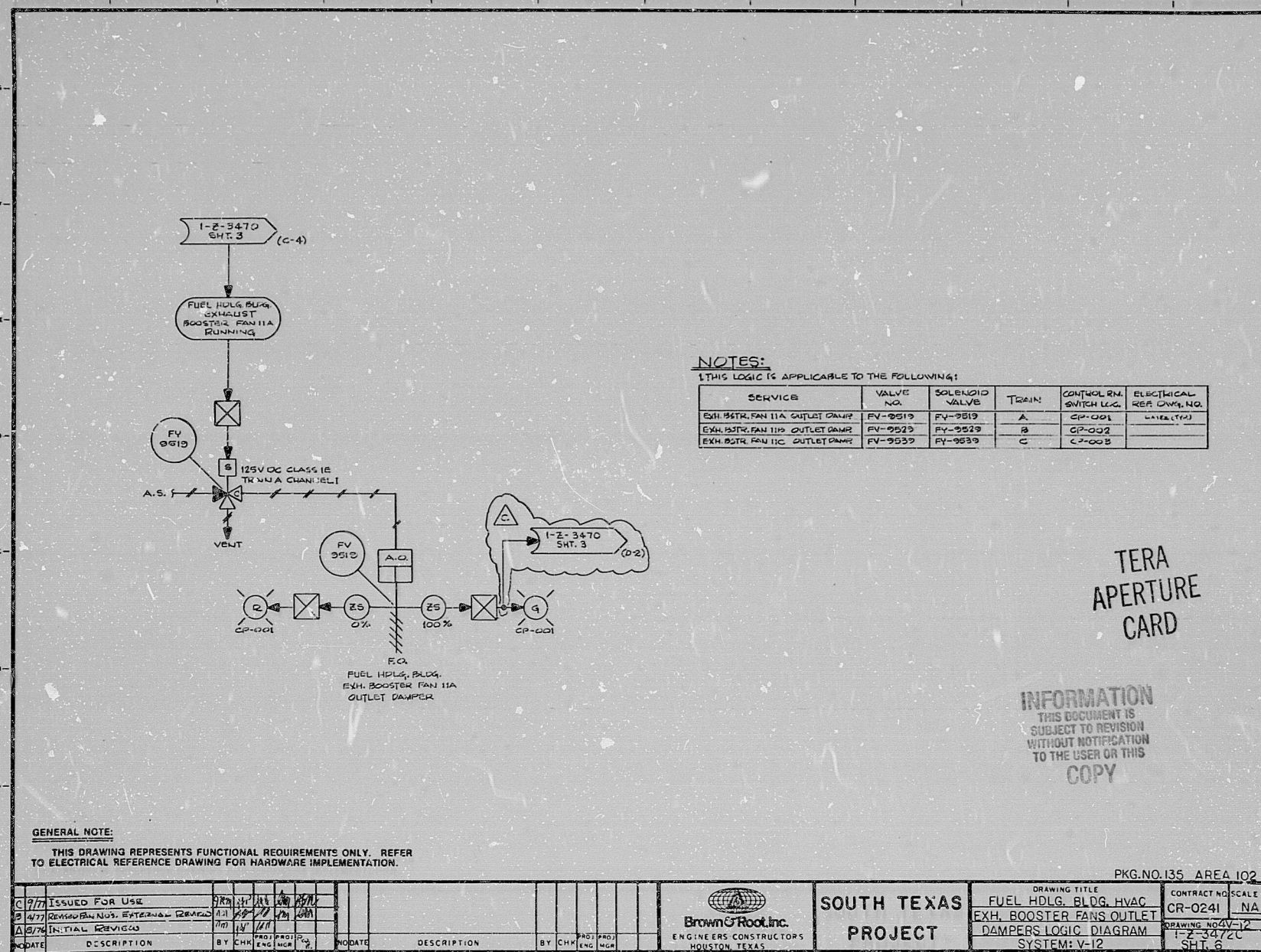
11"

8.5"

8.5"

11"

17"



NOTES:
1. THIS LOGIC IS APPLICABLE TO THE FOLLOWING:

SERVICE	VALVE NO.	SOLENOID VALVE	TRAIN	CONTROL SW. SWITCH LOG.	ELECTRICAL REF. DRAWING NO.
EXH. BOOSTER FAN IIA OUTLET DAMP	FV-9519	FV-9519	A	CP-001	NA (T-2)
EXH. BOOSTER FAN IIB OUTLET DAMP	FV-9523	FV-9523	B	CP-002	
EXH. BOOSTER FAN IIC OUTLET DAMP	FV-9539	FV-9539	C	CP-002	

TERA APERTURE CARD

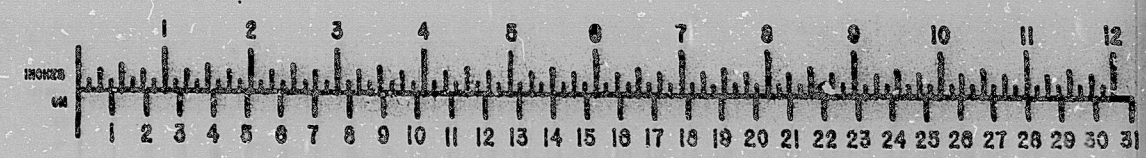
INFORMATION
THIS DOCUMENT IS
SUBJECT TO REVISION
WITHOUT NOTIFICATION
TO THE USER OR THIS
COPY

GENERAL NOTE:
THIS DRAWING REPRESENTS FUNCTIONAL REQUIREMENTS ONLY. REFER TO ELECTRICAL REFERENCE DRAWING FOR HARDWARE IMPLEMENTATION.

C 9/77 ISSUED FOR USE		BY	CHK	PRO	DATE	 Brown & Root Inc. ENGINEERS CONSTRUCTORS HOUSTON, TEXAS	SOUTH TEXAS PROJECT	DRAWING TITLE	CONTRACT NO. SCALE	
S 4/77 REVISIONS BY		CHK	PRO	DATE	FUEL HDLG. BLDG. HVAC EXH. BOOSTER FANS OUTLET DAMPERS LOGIC DIAGRAM			CR-0241 NA		
A 5/76 INITIAL REVIEW		CHK	PRO	DATE	T-2-3472C SHT. 6					
DATE	DESCRIPTION	BY	CHK	PRO	DATE	DESCRIPTION	BY	CHK	PRO	DATE

BROWN & ROOT INC.
MICROFILM SERVICES

MONDAY, OCT. 31 1977



RIDS

8112090351

