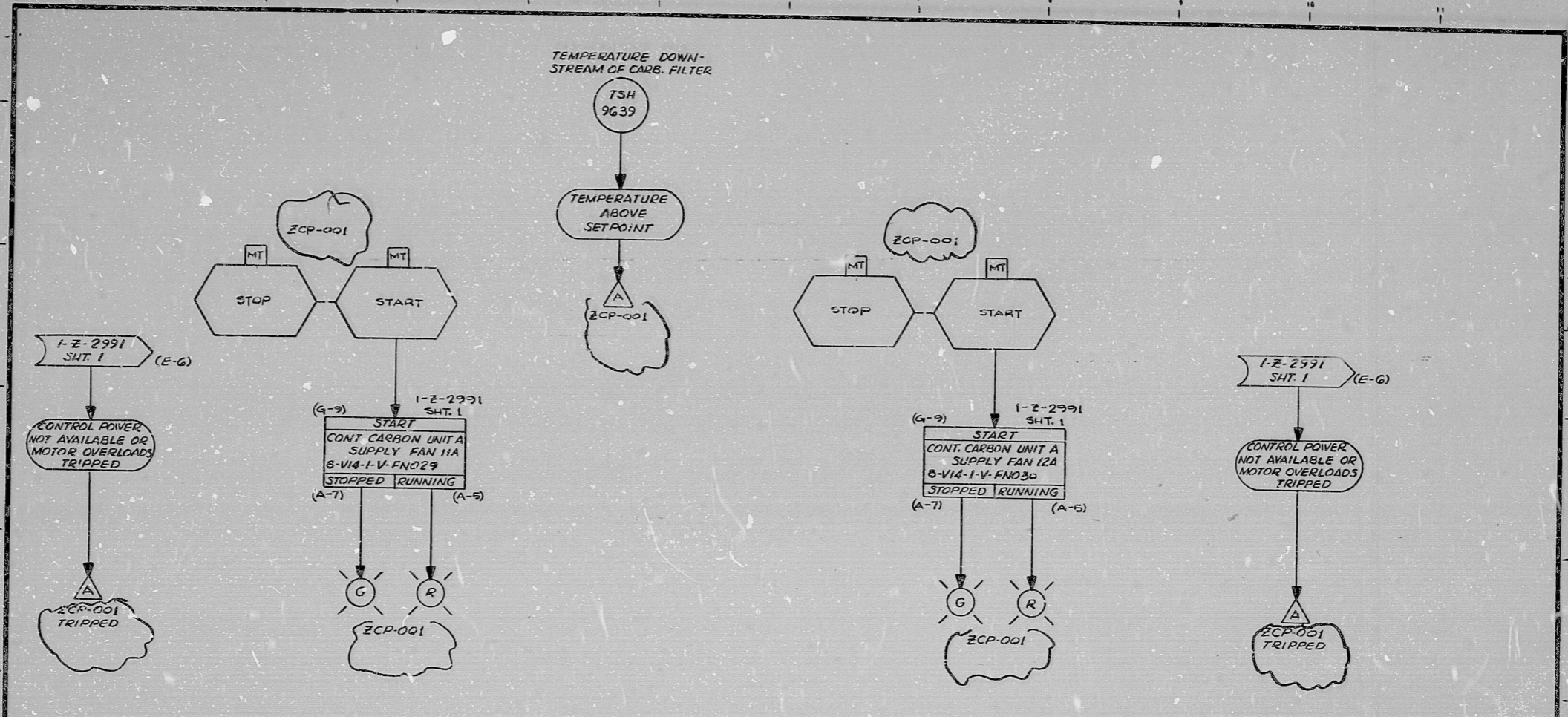


11
9.8
8.5
11
17

11
9.8
8.5
11
17



NOTES:
1) THIS LOGIC IS APPLICABLE TO THE FOLLOWING:

CONT. CARB. UNIT	EQUIPMENT MECH. NO.	SERVICE	CONTROL RM SWITCH LOC.	TEMP SWITCH	ELECTRICAL REF. DWG.
A	B-VIA-1-V-FN029	SUPPLY FAN 11A	ZCP-001	TSH-9639	I-E-1318
A	B-VIA-1-V-FN030	SUPPLY FAN 12A	ZCP-001	TSH-9639	I-E-1319
B	B-VIA-1-V-FN031	SUPPLY FAN 11B	ZCP-002	TSH-9646	I-E-1320
B	B-VIA-1-V-FN032	SUPPLY FAN 12B	ZCP-002	TSH-9646	I-E-1321

GENERAL NOTE:
THIS DRAWING REPRESENTS FUNCTIONAL REQUIREMENTS ONLY. REFER TO ELECTRICAL REFERENCE DRAWING FOR HARDWARE IMPLEMENTATION.

NO.	DATE	DESCRIPTION	BY	CHK	PROJ. ENG.	PROJ. MGR.	DATE	DESCRIPTION	BY	CHK	PROJ. ENG.	PROJ. MGR.	DATE
D 10/7/73		REVISED AS NOTED											
C 10/7/73		ISSUED FOR USE											
B 10/7/73		INTERIM REVIEW; REVISED AS NOTED											
A 10/7/73		INITIAL REVIEW											

Brown & Root Inc.
ENGINEERS-CONSTRUCTORS
HOUSTON, TEXAS

SOUTH TEXAS PROJECT

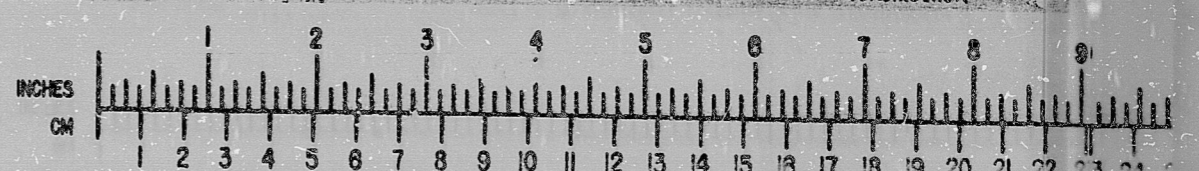
DRIVING TITLE: R.C. BLDG. HVAC
CONT. CARBON FANS
LOGIC DIAGRAM
SYSTEM V-14
SHT. 2

CONTRACT NO. SCALE: CR-0241 N/A
DRAWING NO. GV-14
I-Z-3491D
SHT. 2

PKG. NO. 132 AREA 102

BROWN & ROOT INC.
MICROFILM SERVICES

WEDNESDAY, OCT. 24 1973



INFORMATION
THIS DOCUMENT IS
SUBJECT TO REVISION
WITHOUT NOTIFICATION
TO THE USER OF THIS
COPY

TERA
APERTURE
CARD

RIDS

812090322

