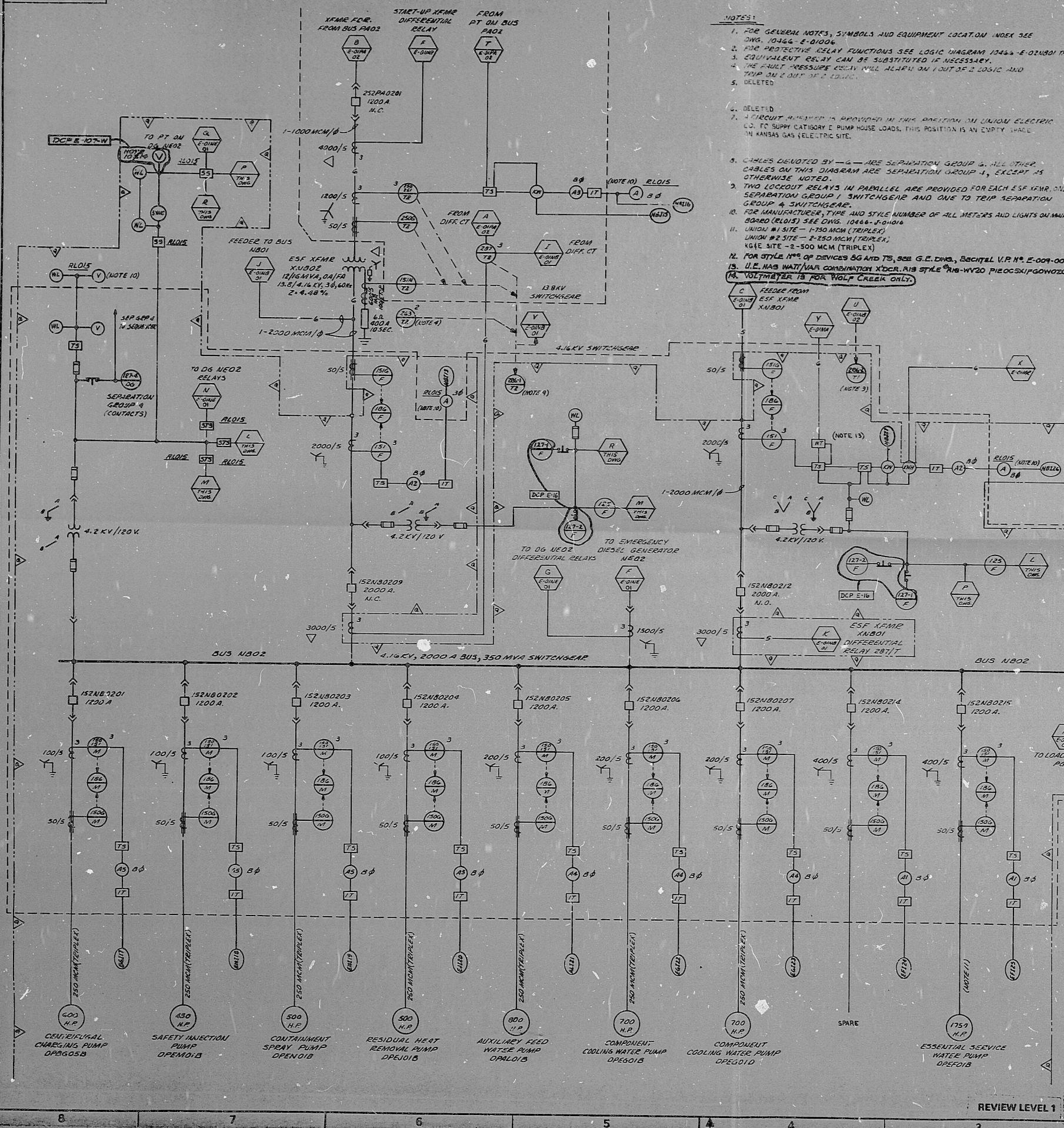
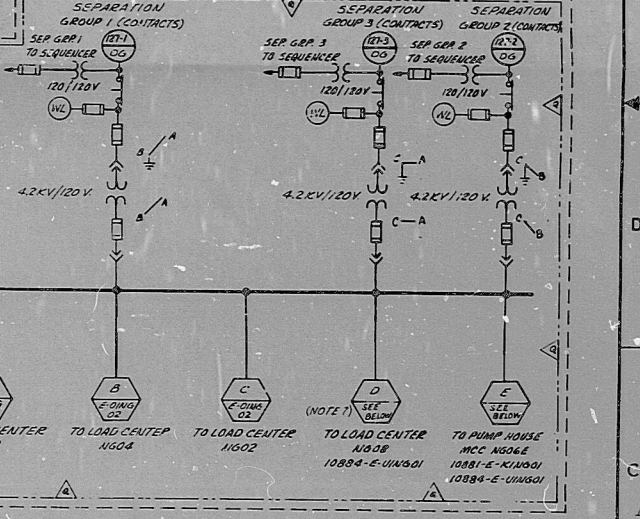


SCALING RULES
E-OINB02(Q)



- NOTES:
- FOR GENERAL NOTES, SYMBOLS AND EQUIPMENT LOCATION INDEX SEE DWG. 10466-E-01004.
 - PROTECTIVE RELAY FUNCTIONS SEE LOGIC DIAGRAM 10466-E-01001 THRU 04.
 - EQUIVALENT RELAY CAN BE SUBSTITUTED IF NECESSARY.
 - THE FIRST PRESSURE CONTROL WILL ALARM ON 1 OUT OF 2 LOGIC AND TRIP ON 2 OUT OF 2 LOGIC.
 - DELETED.
 - CIRCUIT BREAKER IS PROVIDED IN THIS POSITION IN UNION ELECTRIC CO. TO SUPPLY CATEGORY E PUMP HOUSE LOADS. THIS POSITION IS AN EMPTY SPACE IN KANSAS GAS ELECTRIC SITE.
 - CABLES INDICATED BY --- ARE SEPARATION GROUP 2. ALL OTHER CABLES ON THIS DIAGRAM ARE SEPARATION GROUP 1, EXCEPT AS OTHERWISE NOTED.
 - TWO LOCKOUT RELAYS IN PARALLEL ARE PROVIDED FOR EACH ESF FEEDER ONE FOR SEPARATION GROUP 1 SWITCHGEAR AND ONE TO TRIP SEPARATION GROUP 2 SWITCHGEAR.
 - FOR MANUFACTURER, TYPE AND STYLE NUMBER OF ALL METERS AND LIGHTS ON MAIN CONTROL BOARD (RELAYS) SEE DWG. 10466-E-01001.
 - UNION #1 SITE - 1750 MCM (TRIPLEX)
 - UNION #2 SITE - 2750 MCM (TRIPLEX)
 - KGE SITE - 2750 MCM (TRIPLEX)
 - FOR STYLE # OF DEVICES 0G AND 70, SEE G.E. DWG. BACHTEL V.P. # E-001-000.
 - U.C. HAS WATT/VAH COMBINATION XDCR. HIS STYLE # IS W-220 PIECE SKIP W02020100.
 - WATT/VAH IS FOR WOLF CREEK ONLY.

DEVICE	DESCRIPTION	M.F.R.	TYPE	STYLE NO.
127-1	FEEDER BREAKER PERMISSIVE CLOSE UNDERVOLTAGE RELAY	GE	127-1	127-1
150-151	MOTOR OVERCURRENT RELAY	GE	150-151	150-151
150-152	MOTOR GROUND OVERCURRENT RELAY	GE	150-152	150-152
151	FEEDER OVERCURRENT RELAY	GE	151	151
151-152	FEEDER GROUND OVERCURRENT RELAY	GE	151-152	151-152
151-153	FEEDER UNDERVOLTAGE RELAY	GE	151-153	151-153
152	BUS UNDERVOLTAGE RELAY (TO LOAD SHEDDER)	GE	152	152
152-153	TRANSFORMER OVERCURRENT RELAY	GE	152-153	152-153
152-154	TRANSFORMER GROUND OVERCURRENT RELAY	GE	152-154	152-154
152-155	TRANSFORMER NEUTRAL OVERCURRENT RELAY	GE	152-155	152-155
152-156	TRANSFORMER FAULT PRESSURE RELAY	GE	152-156	152-156
152-157	TRANSFORMER DIFFERENTIAL RELAY	GE	152-157	152-157
152-158	LOCKOUT RELAY	GE	152-158	152-158
125	SYNCHRONIZING CHECK RELAY	GE	125	125
127	CURRENT TRANSDUCER	G.E.	127	127
A1	AMMETER	GE	A1	A1
TS	TEST SWITCH	W	TS	TS
WL	WHITE LIGHT	G.E.	WL	WL
V	VOLTMETER	G.E.	V	V
A2	AMMETER	G.E.	A2	A2
SS	SYNCHROSCOPE SELECTOR SWITCH	20K0	SS	SS
SYNC	SYNCHROSCOPE	GE	SYNC	SYNC
KW	KILOWATT METER	G.E.	KW	KW
KWH	KILOWATT HOUR METER	G.E.	KWH	KWH
WT	WATT TRANSDUCER (NOTE 13)	G.E.	WT	WT
A3	AMMETER	GE	A3	A3
STC	SYNCHRONIZING TRANSFER SWITCH	ELECTRA	STC	STC
A4	AMMETER	GE	A4	A4
A5	AMMETER	GE	A5	A5



THE FIRST DIGIT OF DEVICE NUMBER IS USED TO DESIGNATE VOLTAGE

4	ABOVE 25KV
3	25 KV
2	13.8 KV
1	4160 V
NO NUMBER	480V & BELOW

REVIEW LEVEL 1

BECHTEL
GAITHERSBURG, MARYLAND

SNUPPS
LOWER MEDIUM VOLTAGE SYSTEM
CLASS I E 4.16 KV SINGLE LINE
METER AND RELAY DIAGRAM

10466 E-OINB02(Q) 12

DATE 8/1/74 DESIGNED BY JPM

17

8410090094

PDR RIDS

