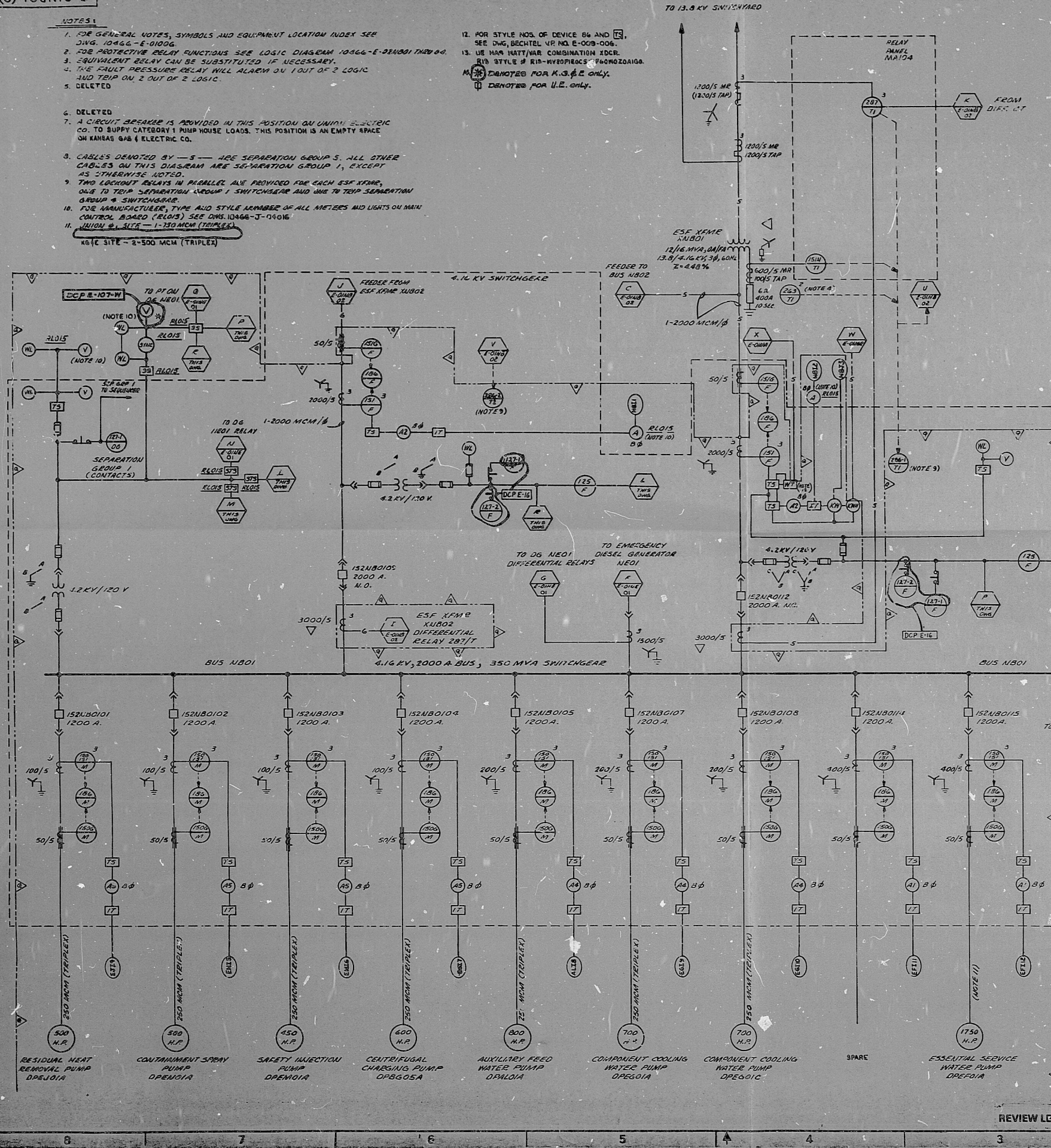


SCALING RULES

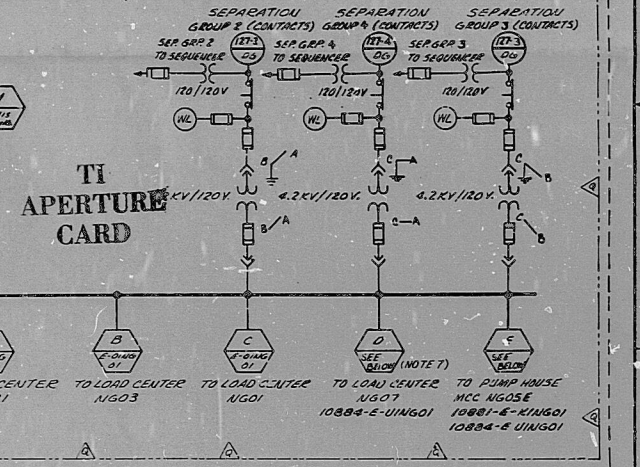
SIZE E

E-01NBO1 (Q)

- NOTES**
- FOR GENERAL NOTES, SYMBOLS AND EQUIPMENT LOCATION INDEX SEE DWG. 10466-E-01006.
  - FOR PROTECTIVE RELAY FUNCTIONS SEE LOGIC DIAGRAM 10466-E-01001 THROUGH 004.
  - EQUIPMENT RELAY CAN BE SUBSTITUTED IF NECESSARY.
  - THE FAULT PRESSURE RELAY WILL ALARM BY 1 OUT OF 2 LOGIC AND TRIP ON 2 OUT OF 2 LOGIC.
  - DELETED
  - DELETED
  - A CIRCUIT BREAKER IS PROVIDED IN THIS POSITION ON UNIT 1 ELECTRIC CO. TO SUPPLY CATEGORY 1 PUMP HOUSE LOADS. THIS POSITION IS AN EMPTY SPACE ON KEMAS 948 4 ELECTRIC CO.
  - CABLES DENOTED BY -S- ARE SEPARATION GROUP 5. ALL OTHER CABLES ON THIS DIAGRAM ARE SEPARATION GROUP 1, EXCEPT AS OTHERWISE NOTED.
  - TWO LOCKOUT RELAYS IN PARALLEL ARE PROVIDED FOR EACH ESP STAGE, ONE TO TRIP SEPARATION GROUP 1 SWITCHGEAR AND ONE TO TRIP SEPARATION GROUP 4 SWITCHGEAR.
  - FOR MANUFACTURE, TYPE AND STYLE NUMBER OF ALL METERS AND LIGHTS ON MAIN CONTROL BOARD (RLO/S) SEE DWG. 10466-J-01016.
  - UNION & SITS - 1-750 MCM (TRIPLES)  
K&E SITE - 2-500 MCM (TRIPLES)
  - FOR STYLE NOS. OF DEVICE 86 AND 87, SEE DWG. BECTEL UP NO. E-008-006.
  - USE HAS HATT/VAR COMBINATION IOCR.
  - STYLE # R18-HV0P0R0C0-P0M0Z0A0I0.
  - DENOTED FOR K.3.#.2 ONLY.
  - DENOTED FOR U.E. ONLY.



DEVICE	DESCRIPTION	MFR	TYPE	STYLE
50-151	MOTOR OVERCURRENT RELAY	GE	12AC33	12AC33A000A
1500	MOTOR GROUND OVERCURRENT RELAY	GE	12AC33	12AC33A000A
1500	FEEDER OVERCURRENT RELAY	GE	12AC33	12AC33A000A
1500	FEEDER GROUND OVERCURRENT RELAY	GE	12AC33	12AC33A000A
1500	FEEDER UNDERVOLTAGE RELAY	GE	12AC33	12AC33A000A
1500	BUS UNDERVOLTAGE RELAY (LOAD SHEDDER)	GE	12AC33	12AC33A000A
1500	AMMETER	GE	12AC33	12AC33A000A
1500	AMMETER	GE	12AC33	12AC33A000A
1500	TRANSFORMER NEUTRAL OVERCURRENT RELAY	GE	12AC33	12AC33A000A
1500	TRANSFORMER FAULT PRESSURE RELAY	GE	12AC33	12AC33A000A
1500	TRANSFORMER DIFFERENTIAL RELAY	GE	12AC33	12AC33A000A
1500	LOCKOUT RELAY	GE	12AC33	12AC33A000A
1500	SYNCHRONIZING CHECK RELAY	GE	12AC33	12AC33A000A
1500	CURRENT TRANSFORMER	GE	12AC33	12AC33A000A
1500	TEST SWITCH	GE	12AC33	12AC33A000A
1500	WHITE LIGHT	GE	12AC33	12AC33A000A
1500	VOLTMETER	GE	12AC33	12AC33A000A
1500	AMMETER	GE	12AC33	12AC33A000A
1500	KILOWATT HOUR METER	GE	12AC33	12AC33A000A
1500	SYNCHRONIZING SELECTOR SWITCH	GE	12AC33	12AC33A000A
1500	SYNCHROSCOPE	GE	12AC33	12AC33A000A
1500	KILOWATT METER	GE	12AC33	12AC33A000A
1500	WATT TRANSDUCER (NOTE 13)	GE	12AC33	12AC33A000A
1500	SYNCHRONIZING TRANSFER SWITCH	GE	12AC33	12AC33A000A
1500	FEEDER BREAKER PERMISSIVE CLOSE UNDERVOLTAGE RELAY	GE	12AC33	12AC33A000A



4	ABOVE 25 KV
3	25 KV
2	13.8 KV
1	4160 V
NO NUMBER	480 V & BELOW

THE FIRST DIGIT OF THE DEVICE NUMBER IS USED TO DESIGNATE VOLTAGE LEVEL

NOTICE: ALL INFORMATION ON THIS DOCUMENT IS UNCLASSIFIED EXCEPT WHERE SHOWN OTHERWISE. THIS DOCUMENT IS UNCLASSIFIED EXCEPT WHERE SHOWN OTHERWISE. THIS DOCUMENT IS UNCLASSIFIED EXCEPT WHERE SHOWN OTHERWISE.

**BECTEL**  
GAITHERSBURG, MARYLAND

**SNUPPS**  
LOWER MEDIUM VOLTAGE SYSTEM  
CLASS I E 4.16 KV SINGLE LINE  
METER AND RELAY DIAGRAM

REVISIONS

NO.	DATE	REVISIONS
1	08/27/74	DESIGNED BY: [Signature]
2		CHECKED BY: [Signature]
3		APPROVED BY: [Signature]

JOB NO. 10466 E-01NBO1 (Q) 12

BECTEL DRAWING NO. 10466 E-01NBO1 (Q) 12

DATE 08/27/74

I certify that the design contained on this drawing was made in the normal and regular course of business, on the date stated below and that it is the original design of the inventor.

8410090091

**PDR RIDS**

