

INFORMATION
THIS DOCUMENT IS
SUBJECT TO REVISION
WITHOUT NOTIFICATION
TO THE USER OF THIS
COPY

NOTES:
1) THIS LOGIC IS APPLICABLE TO THE FOLLOWING:

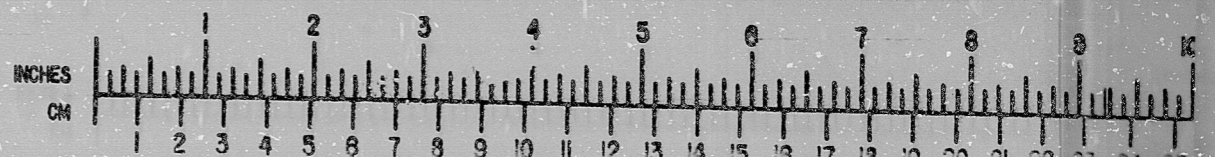
| EQUIPMENT MECH. NO. | SERVICE | CONTROL RM. SWITCH LOC. | ELECTRICAL REF. DWG. NO. |
|---------------------|-----------------|-------------------------|--------------------------|
| 8-VI4-I-V-FN011 | SUPPLY FAN 11A | ZCP-001 | 1-E-7260 |
| 8-VI4-I-V-FN012 | SUPPLY FAN 11B | ZCP-002 | 1-E-7261 |
| 8-VI4-I-V-FN013 | EXHAUST FAN 11A | ZCP-001 | 1-E-7262 |
| 8-VI4-I-V-FN014 | EXHAUST FAN 11B | ZCP-002 | 1-E-7263 |

GENERAL NOTE:
THIS DRAWING REPRESENTS FUNCTIONAL REQUIREMENTS ONLY. REFER TO ELECTRICAL REFERENCE DRAWING FOR HARDWARE IMPLEMENTATION.

| DATE | DESCRIPTION | BY | CHK | PROJ. ENGR. | PROJ. MGR. | DATE | DESCRIPTION | BY | CHK | PROJ. ENGR. | PROJ. MGR. |
|----------|-----------------------------------|-----|-----|-------------|------------|------|-------------|----|-----|-------------|------------|
| 10/27/77 | REVISED AS NOTED, ISSUED FOR USE | ... | ... | ... | ... | | | | | | |
| 10/17/77 | ISSUED FOR USE | ... | ... | ... | ... | | | | | | |
| 10/17/77 | EXTERNAL REVIEW, REVISED AS NOTED | ... | ... | ... | ... | | | | | | |
| 10/17/77 | INITIAL REVIEW | ... | ... | ... | ... | | | | | | |

| | | | |
|---|-----------------------------------|---|---|
| <p>Brown & Root Inc. ENGINEERS-CONSTRUCTORS HOUSTON, TEXAS</p> | <p>SOUTH TEXAS PROJECT</p> | <p>DRAWING TITLE RC. BLDG. HVAC SUPPLEMENT. CONT. PURGE SUPPLY & EXH. FANS LOGIC DIAGRAM SYSTEM: V-14</p> | <p>CONTRACT NO. SCALE CR-0241 N/A</p> |
| | | <p>DRAWING NO. 4V-14 1-Z-3491 D SHT. 6</p> | |
| | | <p>PKG. NO. 132. AREA 102</p> | |

BROWN & ROOT INC.
MICROFILM SERVICES



WEDNESDAY, OCT. 24 1977

RIDS

8112090311

