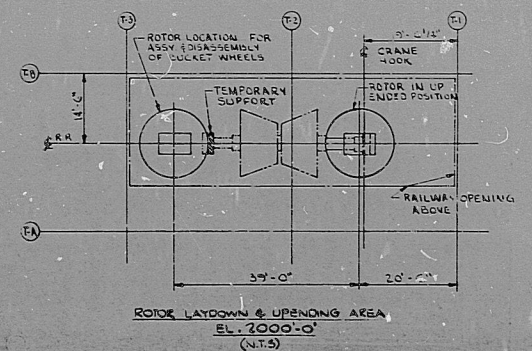


This drawing and its data is the property of the Utilities which are participating in the SNUPPS Project. It is loaned on the borrower's express agreement, that it will not be reproduced, copied, loaned, substituted, or used except in the limited way and purpose intended by the SNUPPS Utilities to the borrower.

- REFERENCES:**
1. C-004512 TURBINE BLDG. OPERATING FLOOR EL. 2065.0 FLOOR LAYOUT
 2. G.E. DWG. 16904130 (M-800-171) LAGGING-H.P. SHELL (DIMS. AND EST. WEIGHTS)
 3. G.E. DWG. 27849375 (M-800-168) SHIPPING DIMENSIONS (GEN. FIELD)
 4. G.E. DWG. 842212 (M-800-062 & 063) MAJOR TURBINE COMPONENTS (SHIPS, CR. RANGE & LANDING SPACE)
 5. GLPE-357 DATED MAY 27, 1977 APPROXIMATE DIMENSIONS & WEIGHTS OF MISCELLANEOUS TURBINE PARTS
 6. GL BE-219 DATED JANUARY 17, 1977 EXCITER DIMENSIONS & WEIGHTS
 7. BUSE-9442 DATED JANUARY 16, 1976 T-9 LAYDOWN DIAPHRAGM STORAGE RACKS.



T1 APERTURE CARD

NO.	DATE	REVISIONS	BY	CHECKED
SCALE: 1/8" = 1'-0" DATE 5-7-76 (DESIGNED PER DRAWING SV 1)				
BECHTEL BATHESBURG, MARYLAND				
SNUPPS EQUIPMENT LOCATION TURBINE COMPONENTS LAYDOWN OPERATING FLOOR EL. 2065.0				
JOB NO.	BECHTEL DRAWING NO.	REV.	UTILITY DRAWING NO.	
10466	M-OG073	0		
DRAWING APPROVED TO PRINT: [Signature]				

REVIEW LEVEL 1

8410090084

PDR RIDS

