

This drawing and the design it covers is the property of the Utilities which are participating in the SNUPPS Project. It is loaned on the borrower's express agreement that it will not be reproduced, copied, loaned, exhibited, or used except in the limited way and private use permitted by written consent given by the SNUPPS Utilities to the borrower.

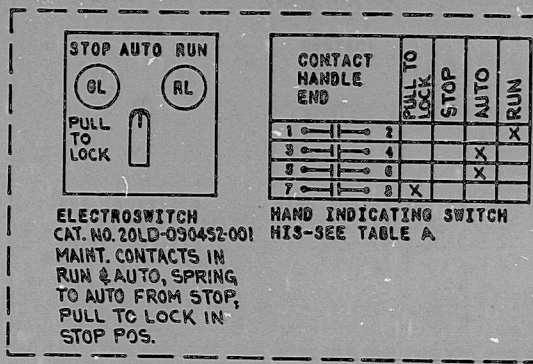
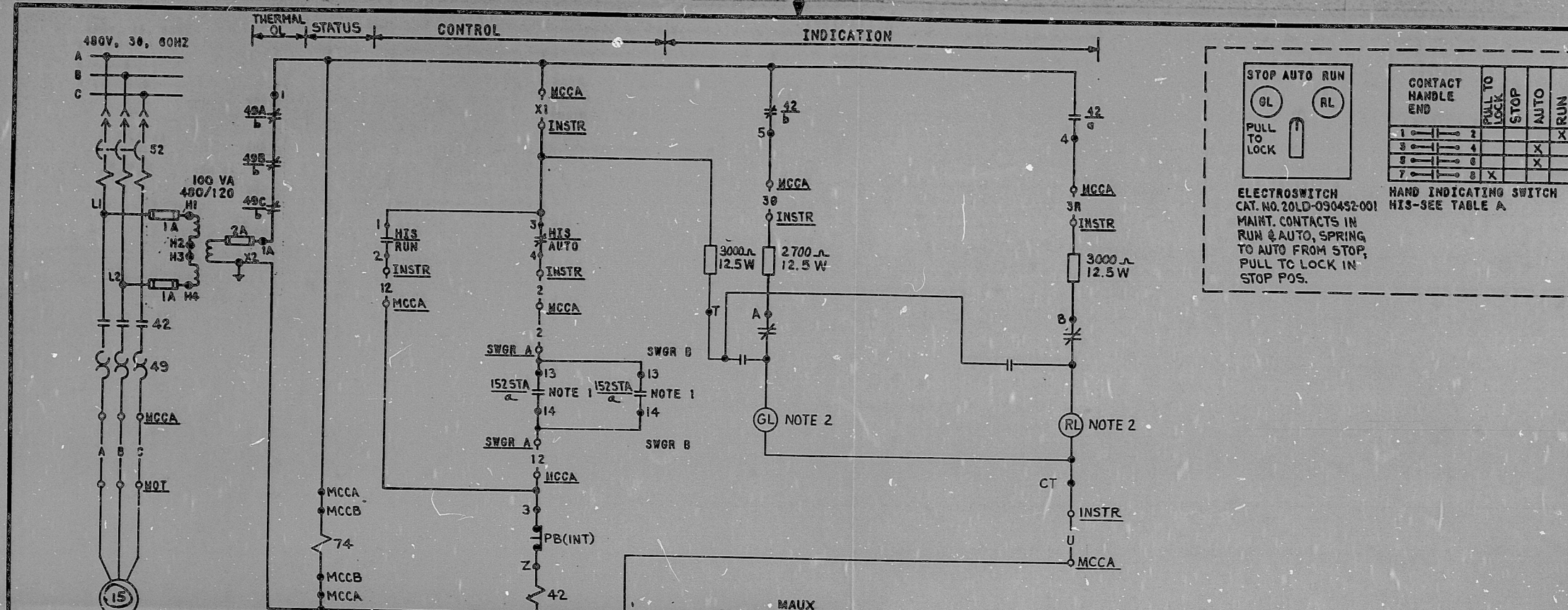
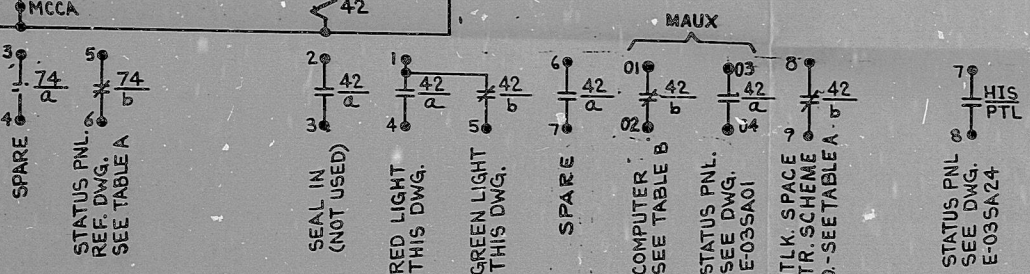


TABLE B

REFER COMP. DWG. BECHTEL V.P. NO.	J-106-0115	J-106-0115
COMPUTER POINT	GLQ2	GLQ23
COMPUTER LOC.-PC	RJ159A	RJ160A
MCC LOCATION-MCC	NG03CDF2	NG04CMF2
COMP SCHEME NO.	4GLR06A	4GLR06B

TABLE A

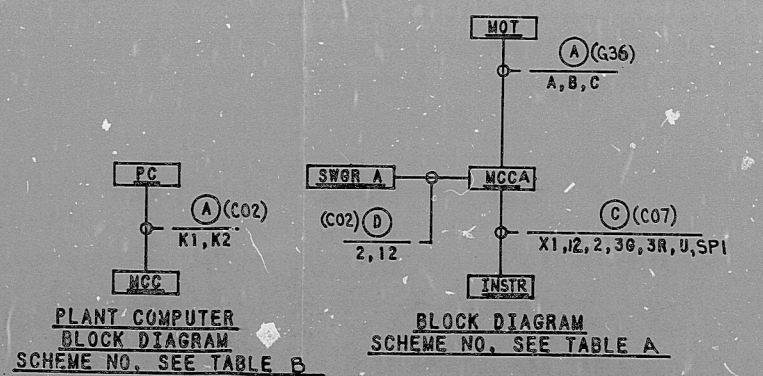
SPACE HTR. INTLK.	1GLY31J	4GLY31K
STATUS PNL. REF. DWG.	E-03SA07	E-03SA10
MCC LOCATION-MCCB	NG03CFE1	NG04CGF1
SWGR LOCATION-SWGR B	NG0108	NG0207
SWGR LOCATION-SWGR A	NG01C7	NG0206
HIS NUMBER	GLHIS2	GLHIS23
HIS LOCATION-INSTR	GLHIS2	GLHIS23
MCC LOCATION-MCCA	NG03CDF2	NG04CMF2
MOTOR NO.-MOT	DS6L11A	DS6L11B
SCHEME NO.	10L906A	49L806B



REFERENCE DWGS: M-02GL01, M-02GL02, J-02GL03A

TI APERTURE CARD

- CONTACT CLOSURES WHEN CCW PUMP RUNS. SEE DWG. E-03EG01A (PMP A), E-03EG01B (PMP C), E-03EG01C (PMP D), E-03EG01D (PMP D).
- PUSHING IN ON LIGHT FOR LAMP TEST REVERSES CONTACT POSITIONS.



DCP E-34

NO.	DATE	REVISION	BY	CHK	DESIGN	DRWG	PROJ	FILE
1	4/24/83	REV'D NOTE 1 & INCORP. SER 2-GL-017A						
2	7/1/83	INCORP. DCP E-34						
3	7/27/83	ISSUED FOR CONSTRUCTION						

SCALE: DESIGNED EJD, DRAWN CAD, CHECKER EJD

BECHTEL
GAITHERSBURG, MARYLAND

SNUPPS
SCHEMATIC DIAGRAM
CCW PUMP ROOM COOLERS

UTILITY DRAWING NO.	REV

JOB NO.	BECHTEL DRAWING NO.	REV
10488	E-03GL06 (Q)	6

DATE: 1-1-83 OPERATOR: [Signature] SUPERVISOR: [Signature]

REVIEW LEVEL 3

I certify that the image contained on this frame was made in the normal and regular course of business, on the date stated below and that it is an accurate reproduction of the document(s) submitted to Micrographics.

16X

8410090067

PDR RIDS

