

INFORMATION
THIS DOCUMENT IS
SUBJECT TO REVISION
WITHOUT NOTICE
TO THE USER OF THIS
COPY
TERA
APERTURE
CARD

NOTES:
1. THIS LOGIC IS APPLICABLE TO THE FOLLOWING:

SERVICE	SOLENOID VALVE	VALVE NO.	ELEC. REF. DWG.
RCFC WATER CHILLER IIA COND. FLOW	FY-9612	FV-9612	1-E-7249
RCFC WATER CHILLER IIB COND. FLOW	FY-9614	FV-9614	
RCFC WATER CHILLER IIC COND. FLOW	FY-9616	FV-9616	
RCFC WATER CHILLER IIA EVAP. FLOW	FY-9611	FV-9611	
RCFC WATER CHILLER IIB EVAP FLOW	FY-9613	FV-9613	
RCFC WATER CHILLER IIC EVAP FLOW	FY-9615	FV-9615	

GENERAL NOTE:
THIS DRAWING REPRESENTS FUNCTIONAL REQUIREMENTS ONLY. REFER TO ELECTRICAL REFERENCE DRAWING FOR HARDWARE IMPLEMENTATION.

DATE	DESCRIPTION	BY	CHK	ENG	MGR	PO	NO	DATE	DESCRIPTION	BY	CHK	ENG	MGR	PO	NO	DATE
10/27/77	REVISED AS NOTED, ISSUED FOR USE															
10/27/77	ISSUED FOR USE															
11/17/77	EXTERNAL REVIEW															
11/27/77	INTERNAL REVIEW															

Brown & Root Inc.
ENGINEERS-CONSTRUCTORS
HOUSTON, TEXAS

SOUTH TEXAS PROJECT

DRAWING TITLE
R.C. BLDG. HVAC WATER CHILLER FLOW CONTROL

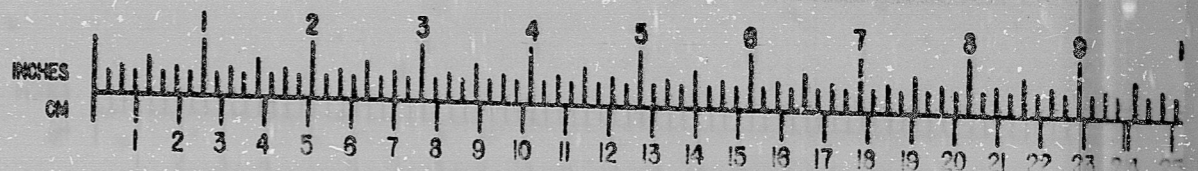
LOGIC DIAGRAM
SYSTEM: V-14

PKG. NO. 132 AREA 102
CONTRACT NO. SCALE CR-0241 NA
DRAWING NO. 6V-14 I-2-3494D SHT. 1

PRELIMINARY REVIEW USE CONSTRUCTION

BROWN & ROOT INC.
MICROFILM SERVICES

WEDNESDAY, OCT. 24 1979



RIDS

81120910262

