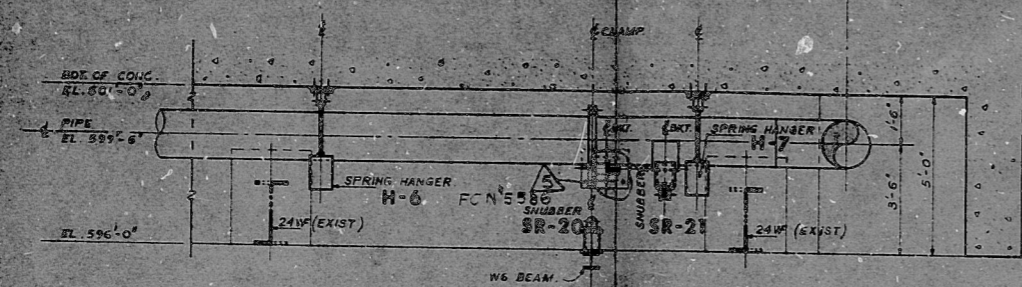
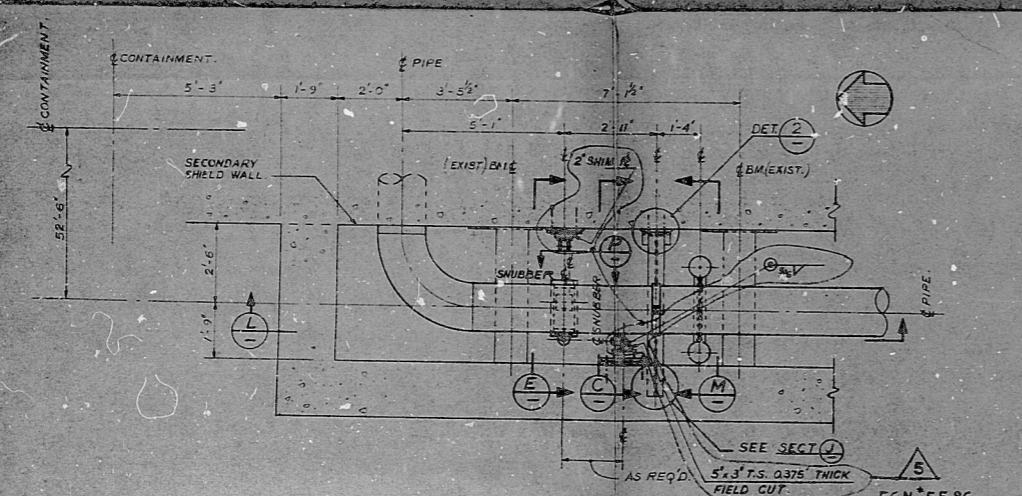


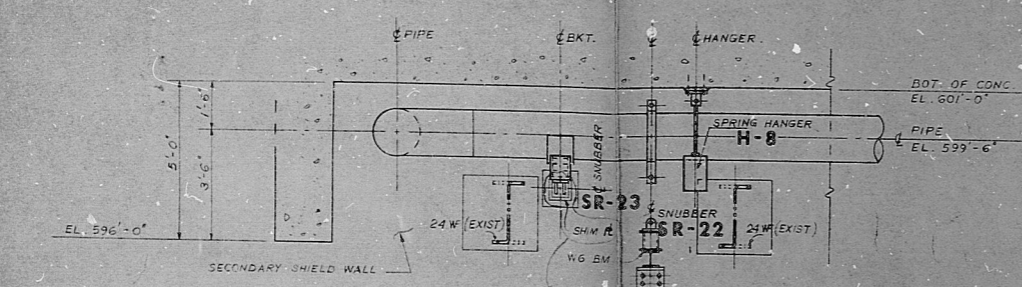
PLAN VIEW AT ELEVATION 601'-0"
SCALE: 1/4" = 1'-0"
PROB. 42C



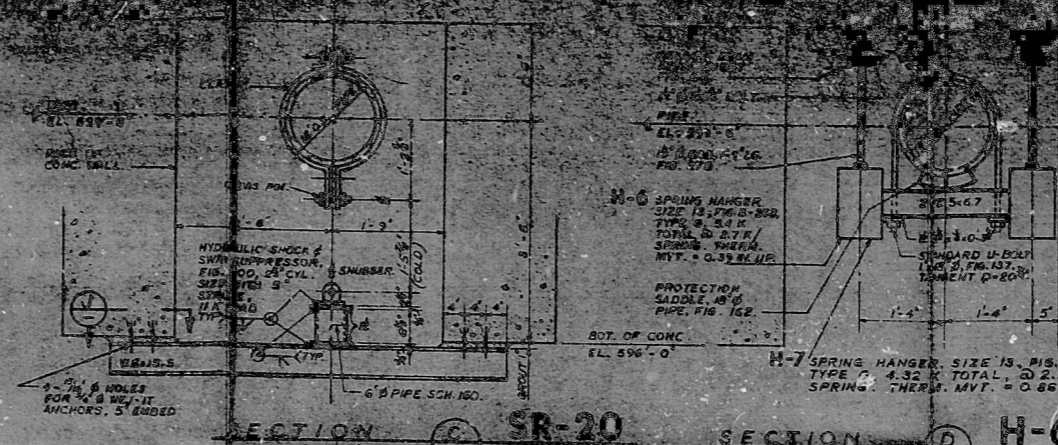
SECTION B
SCALE: 1/4" = 1'-0"



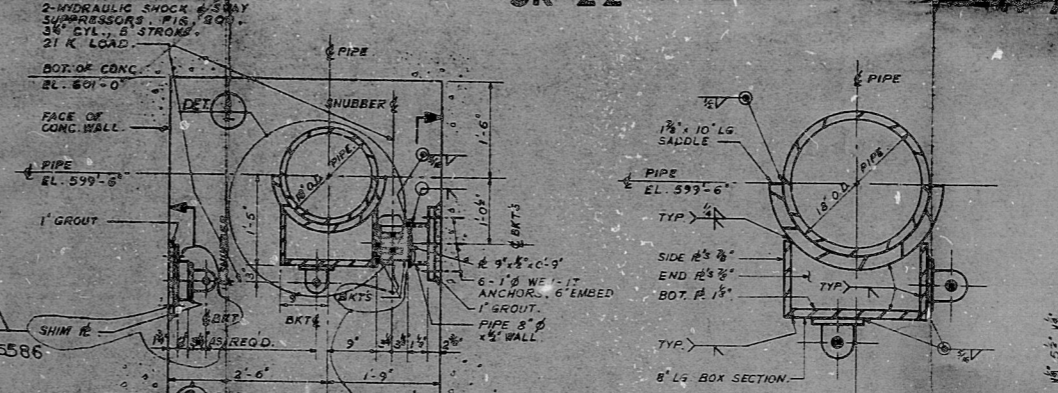
PLAN VIEW AT ELEVATION 601'-0"
SCALE: 1/4" = 1'-0"
PROB. 42A



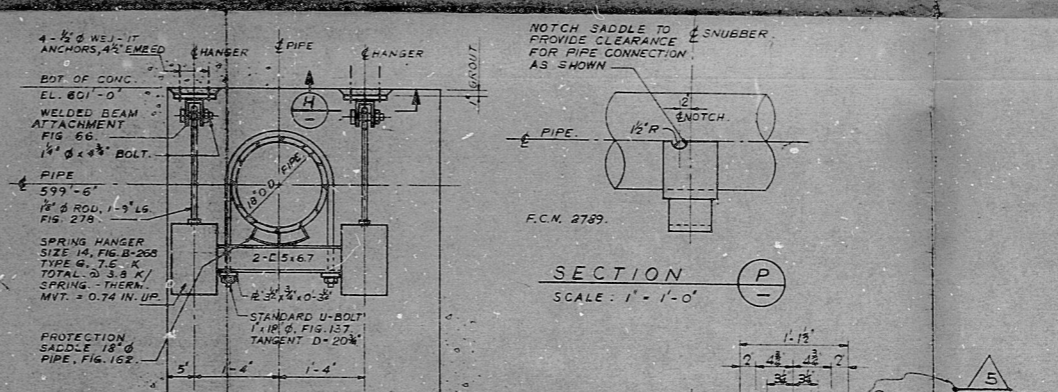
SECTION L
SCALE: 1/4" = 1'-0"



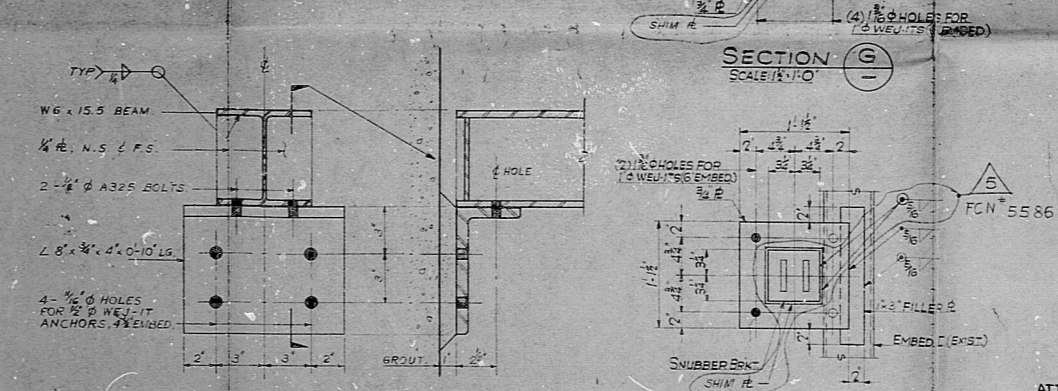
SECTION C
SCALE: 1/4" = 1'-0"



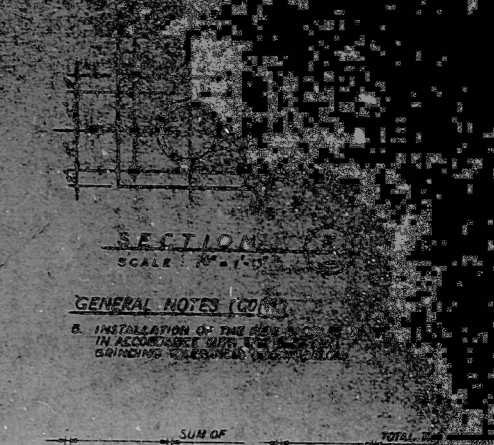
SECTION E
SCALE: 1/4" = 1'-0"



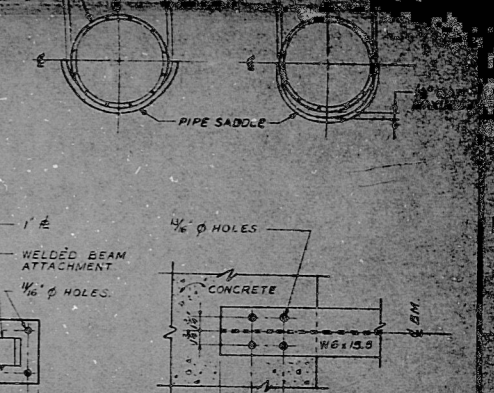
SECTION M
SCALE: 1/4" = 1'-0"



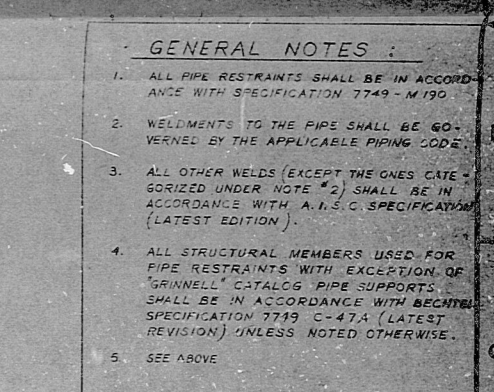
SECTION R
SCALE: 1/4" = 1'-0"



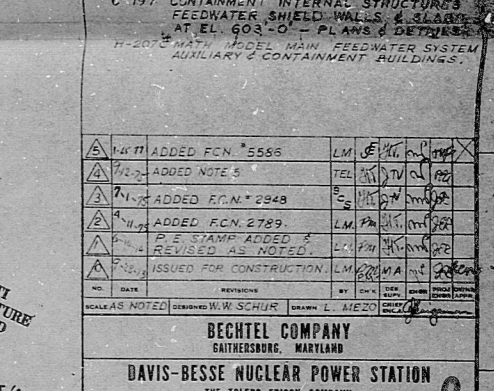
SECTION D
SCALE: 1/4" = 1'-0"



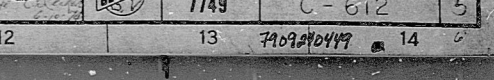
SECTION H
SCALE: 1/4" = 1'-0"



SECTION J
SCALE: 1/4" = 1'-0"



SECTION P
SCALE: 1/4" = 1'-0"



DETAIL 2
SCALE: 3/4" = 1'-0"

GENERAL NOTES (CONT.)
B. INSTALLATION OF THE PIPE RESTRAINTS SHALL BE IN ACCORDANCE WITH THE FOLLOWING NOTES:

- GENERAL NOTES:
1. ALL PIPE RESTRAINTS SHALL BE IN ACCORDANCE WITH SPECIFICATION 7749-M190.
 2. WELDMENTS TO THE PIPE SHALL BE GOVERNED BY THE APPLICABLE PIPING CODE.
 3. ALL OTHER WELDS (EXCEPT THE ONES CATEGORIZED UNDER NOTE #2) SHALL BE IN ACCORDANCE WITH A.I.S.C. SPECIFICATION (LATEST EDITION).
 4. ALL STRUCTURAL MEMBERS USED FOR PIPE RESTRAINTS WITH EXCEPTION OF GRINNELL CATALOG PIPE SUPPORTS SHALL BE IN ACCORDANCE WITH BECHTEL SPECIFICATION 7719-C-474 (LATEST REVISION) UNLESS NOTED OTHERWISE.
 5. SEE ABOVE.

REFERENCE DRAWINGS:
C-128 CONTAINMENT INTERNAL STRUCTURES FLOOR PLAN EL. 603'-0" STRUCTURAL STEEL
C-197 CONTAINMENT INTERNAL STRUCTURES FEEDWATER SHIELD WALLS & SLABS AT EL. 603'-0" - PLANS & DETAILS
H-207 MAIN FEEDWATER SYSTEM AUXILIARY & CONTAINMENT BUILDINGS.

ADD	FCN 5586	LM	SE	PL	PL	PL
ADD	NOTE 5	TEL	PL	PL	PL	PL
ADD	FCN 2948	SE	PL	PL	PL	PL
ADD	FCN 2789	LM	PL	PL	PL	PL
ADD	REVISION	LM	PL	PL	PL	PL

BECHTEL COMPANY
DANVERS, MARYLAND

DAVIS-BESSE NUCLEAR POWER STATION
THE TOLEDO EDISON COMPANY
THE CLEVELAND ELECTRIC ILLUMINATING COMPANY

CONTAINMENT BUILDING
MAIN FEEDWATER SEISMIC-RESTRAINTS
DETAILS, SHEET 5

JOB NO. 7749
DRAWING NO. C-612
REV. 5

74090499

PDR BFT

7909240449

