

**SR-26**  
HYDRAULIC SHOCK & SWAY SUPPRESSOR, FIG. 200, 34" Ø CYL. SIZE WITH 5" STROKE, 12.5 K LOAD. (4 - REQ'D.)

**SR-25**  
HYDRAULIC SHOCK & SWAY SUPPRESSOR, FIG. 200, 34" Ø CYL. SIZE WITH 5" STROKE, 21.0 K LOAD. (4 - REQ'D.)

**SR-24**  
HYDRAULIC SHOCK & SWAY SUPPRESSOR, FIG. 200, 23 1/2" Ø CYL. SIZE WITH 5" STROKE, 12.5 K LOAD. (4 - REQ'D.)

PARTIAL PLAN VIEW AT ELEVATION 601'-0"  
SCALE: 1" = 1'-0"

PLAN VIEW AT ELEVATION 601'-0"  
SCALE: 1/4" = 1'-0"  
PROBS. 42 A & 42 C.

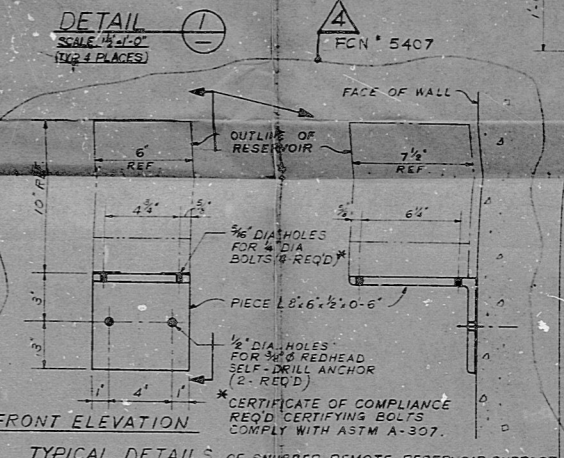
**NOTE:**  
ALL SPRING HANGERS ARE: SIZE 18, FIG. 2-268, TYPE F.

**H-9**  
LOAD: 4.33 K  
THERM. MVT. = 1.38 IN. UP.

**H-10**  
LOAD: 4.12 K  
THERM. MVT. = 1.17 IN. UP.

**H-11**  
LOAD: 4.61 K  
THERM. MVT. = 1.34 IN. UP.

**H-12**  
LOAD: 3.81 K  
THERM. MVT. = 1.11 IN. UP.



**NOTES:**

1. FOR GENERAL NOTES SEE DWS. C-612.

**REFERENCE DRAWINGS:**

C-139 CONTAINMENT INTERNAL STRUCTURES SECONDARY SHIELD WALLS, PLAN AT EL. 603'-0".

C-139 CONTAINMENT INTERNAL STRUCTURES SECONDARY SHIELD WALLS, EL. 585'-0" TO EL. 603'-0", SECT'S, DET'S, SHEET # 1.

C-140 CONTAINMENT INTERNAL STRUCTURES SECONDARY SHIELD WALLS, EL. 585'-0" TO EL. 603'-0", SECT'S, DET'S, SHEET # 2.

H-207 C MATH MODEL MAIN FEEDWATER SYSTEM, AUXILIARY CONTAINMENT BUILDINGS.

SECTION C  
SCALE: 1" = 1'-0"

SECTION D  
SCALE: 1" = 1'-0"

SECTION E H-9, H-11 & SR-24, 25, 26.  
SCALE: 1" = 1'-0"

SECTION H H-10, H-12 & SR-24, 25, 26.  
SCALE: 1" = 1'-0"

SECTION K  
SCALE: 1" = 1'-0"

ADDN #	ADDED FCN. #407	LM	CF	INT	CHK
REVISED	SEC'D START PLAN	LM	MA	INT	CHK
ADDN #	ADDED SEC'T. # AS PER FCN. #407	LM	MA	INT	CHK
ADDN #	ADDED FCN. #392	LM	MA	INT	CHK
ADDN #	P.E. STAMP ADDED	LM	MA	INT	CHK
ADDN #	REVISED AS NOTED	LM	MA	INT	CHK
ADDN #	ISSUED FOR CONSTRUCTION	LM	MA	INT	CHK
DATE					
DESIGNED BY	W. SCHIR	CHECKED BY	L. MEZO		

**BECHTEL COMPANY**  
SANTA BARBARA, CALIFORNIA

**DAVIS-BESSE NUCLEAR POWER STATION**  
THE TOLEDO EDISON COMPANY  
THE CLEVELAND ELECTRIC ILLUMINATING COMPANY

**CONTAINMENT BUILDING**  
MAIN FEEDWATER SEISMIC RESTRAINTS  
DETAILS, SHEET # 2

JOB NO.	DRAWING NO.	REV.
7749	C-613	4

ATTACHMENT 7



7749-404014

PDR BFT

7909240440

