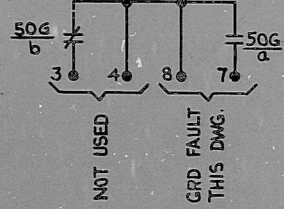
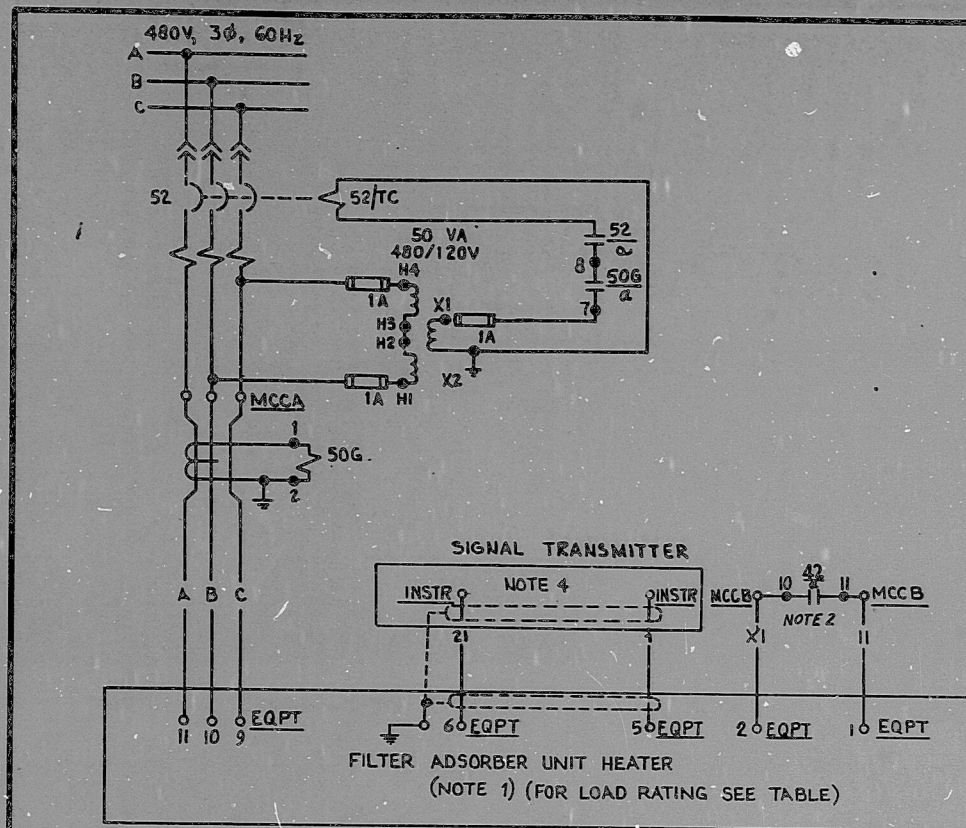
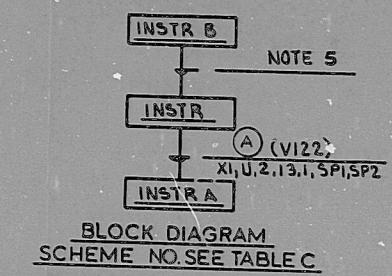


This drawing and the design it covers is the property of the utilities which are participating in the SNUPPS Project. It is loaned to the borrower's express agreement that it will not be reproduced, copied, loaned, exhibited, or used except in the limited way and private use permitted by written consent given by the SNUPPS Utilities to the borrower.

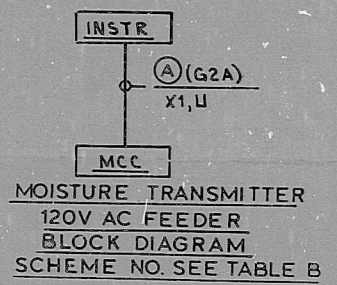


KW RATING	15	15
MCC LOCATION - MCCB	NG01AAF3	NG02AGF1
MOISTURE XMTR NO. - INSTR	GKMT76A	GKMT84A
MCC LOCATION - MCCA	NG01AAF1	NG02ACF1
UNIT HEATER NO. - EQPT	FGK02A	FGK02B
SCHEME NO.	16K611C	46K611D

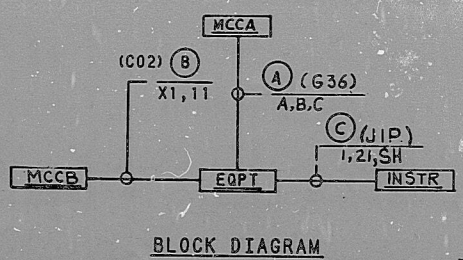


MOISTURE SENSOR LOC. - INSTR B	GKME76	GKME84	NOTE 6
MT LOC. - INSTR	GKMT76	GKMT84	NOTE 4
MT LOC. - INSTR A	GKMT76A	GKMT84A	
SCHEME NO.	16KQ11A	46KQ11B	

FILTER ADSORBER HTR MOISTURE XMTR LOOP



MOISTURE XMTR NO. - INSTR	GKMT76A	GKMT84A
MCC LOCATION - MCC	NG01ACR139	NG02ACR128
UNIT HEATER NO.	FGK02A	FGK02B
SCHEME NO.	16KY11A	46KY11B



BLOCK DIAGRAM
SCHEME NO. - SEE TABLE A
TI APERTURE CARD

REFERENCE DWGS:
M-026K03
J-026K11

1. WIRED BY VENDOR. SEE BECTEL DWG M-621-0047 FOR INFORMATION.
2. CLOSURES WHEN PRESSURIZATION FAN IS RUNNING. SEE DWG E-036K10.
3. DELETED
4. GKMT76A (84A) IS A SIGNAL XMTR. SEE V.P. NO. (M621-0069).
5. CABLE AND FLEX. CONDUIT ARE VENDOR SUPPLIED WITH MOISTURE SENSOR. SEE V.P. NO. M621-0070.
6. GKMT76 (84) IS A RH XMTR. SEE V.P. NO. M621-0068.

NOTES:

NO.	DATE	REVISIONS	BY	CHK	DESIGN	ENGR	APP'D
1	11/11/11	CONSTRUCTION					
2	11/14/11	REV'D INSTR NO. IN TABLE C					
3	11/14/11	REV'D VENDOR PRINTING					
4	11/14/11	ADDED TABLE C, NOTES 4, 5, 6					
5	11/14/11	DEL. NOTE 3 REV. TABLE B					
6	11/14/11	ADDED SCHEME, NOTE 3					
7	11/14/11	TABLE B, REV'D TABLE AT SCH					

SCALE: DESTINED DLG DRAWN CAD CHECKED ENGR

BECTEL
GAITHERSBURG, MARYLAND

SNUPPS

SCHEMATIC DIAGRAM
CONTROL RM PRESSURIZATION FILTER
ADSORBER UNIT HEATERS

UTILITY DRAWING NO.	REV
JOB NO.	BECTEL DRAWING NO.
10488	E-036K11 (Q)
	7

REVIEW LEVEL 3

I certify that the image contained on this frame was made in the normal and regular course of business, on the date stated below and that it is an accurate reproduction of the document(s) submitted to Micrographics.
DATE 5/14/14 OPERATOR Mark Perand

8410090031

PDR RIDS

