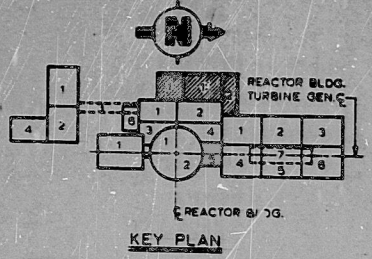
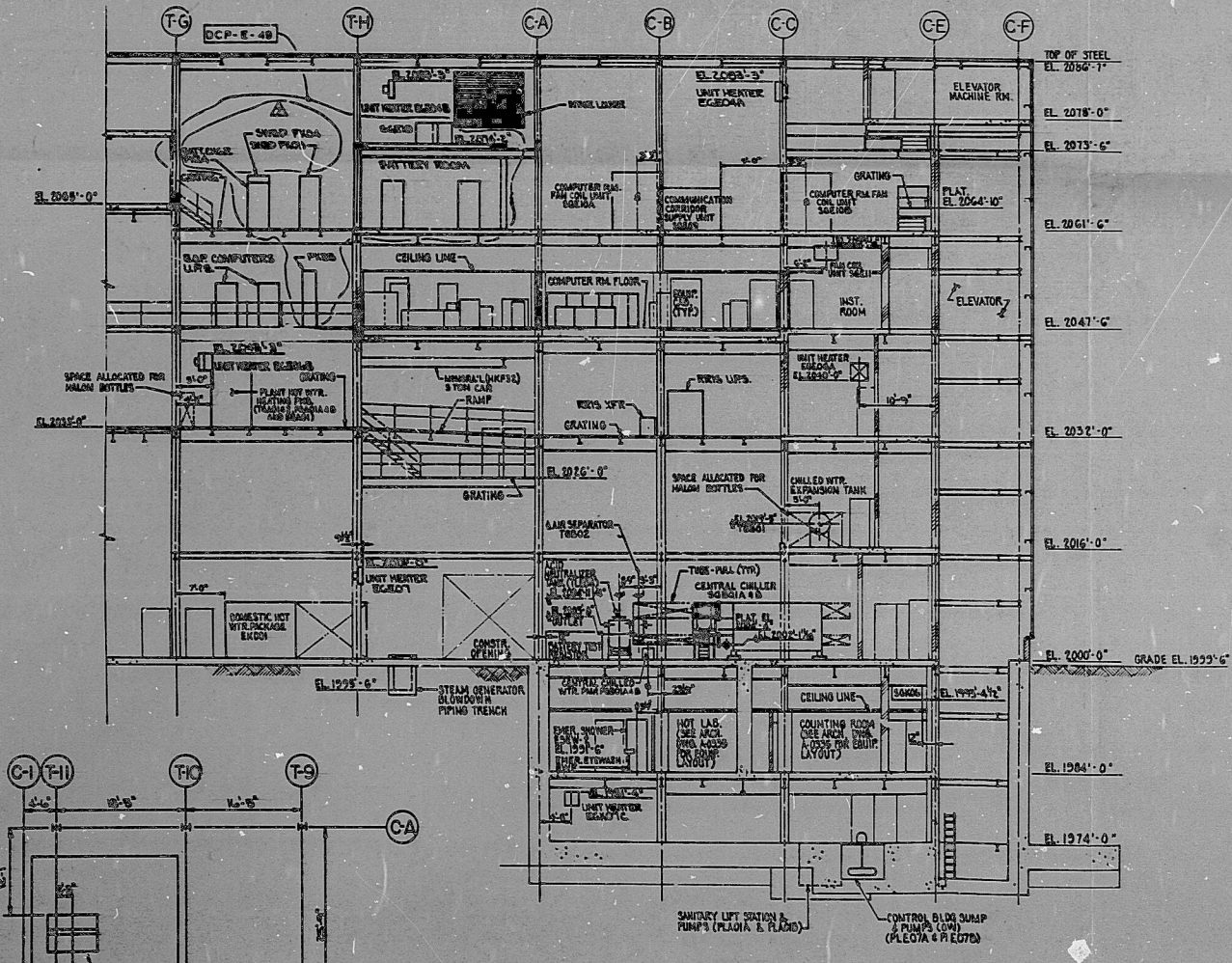


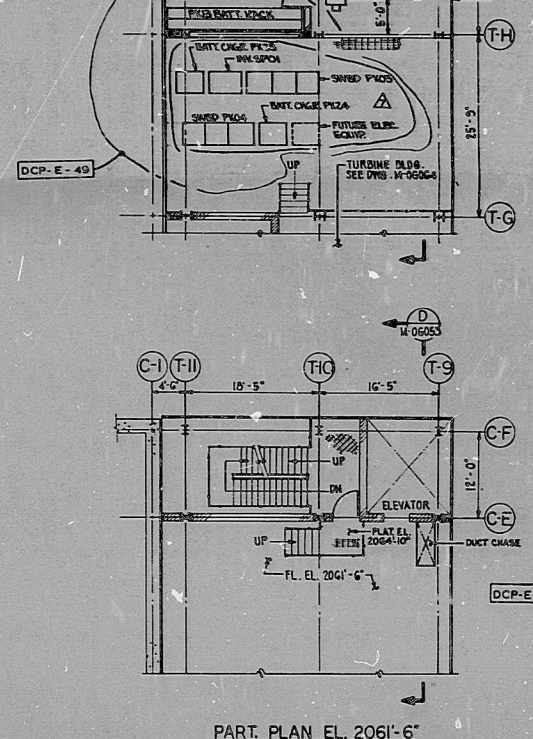
DIESEL GEN. BLDG. ROOF EL. 2066'-0"
 UPPER CABLE SPREADING SEPARATION GROUPS 2, 4 & 6 EL. 2073'-6"
 AND COMMUNICATION CORRIDOR EL. 2061'-6"
 (SEE DWG. M-06053) FOR HVAC EQUIP. IN COMMUNICATION CORRIDOR



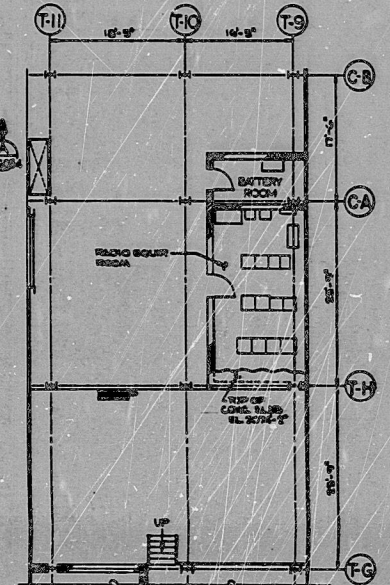
KEY PLAN
 REACTOR BLDG. TURBINE GEN. C
 REACTOR BLDG.
 LEGEND:
 BLOCKWALL
 CONSTRUCTION OPENING



CEILING PLAN AT EL. 2074'-2"



PART PLAN EL. 2061'-6"



FOR UNIT 2 ONLY
 PLAN EL. 2061'-6"

ROOF PLAN AT EL. 2087'-2"

TI
 APERTURE
 CARD

NOTES: 1. ALL INFORMATION ON THIS DOCUMENT IS THE PROPERTY OF THE UNITED STATES GOVERNMENT AND IS LOANED TO YOU BY THE UNITED STATES GOVERNMENT. IT IS TO BE USED ONLY FOR THE PURPOSES SPECIFIED IN THE ORDER AND IS NOT TO BE REPRODUCED OR TRANSMITTED IN ANY FORM OR BY ANY MEANS, ELECTRONIC OR MECHANICAL, INCLUDING PHOTOCOPYING, RECORDING, OR BY ANY INFORMATION STORAGE AND RETRIEVAL SYSTEM, WITHOUT PERMISSION IN WRITING FROM THE UNITED STATES GOVERNMENT. 2. THIS DOCUMENT IS TO BE USED, EXCEPT SUCH PLANS, SPECIFICATIONS, ESTIMATES, PLATS, REPORTS, SURVEYS OR OTHER DOCUMENTS OF INSTRUMENTS AS BEAR THE SIGNATURE AND THE SEAL OF THE UNDERSIGNED.

NO.	DATE	REVISIONS	BY	CHK	APP
1					
2					
3					
4					
5					
6					
7					
8					
9					
10					

RECHTEL
 GAITHERSBURG, MARYLAND

SHUPPS
 EQUIPMENT LOCATIONS
 CONTROL DIESEL GEN. & COMM. CORR. BLDGS.
 PLAN ELS. 2061'-6", 2073'-6" & 2087'-2"

SCALE: 1/4" = 1'-0" (CONTINUED)
 DATE: 10/1/66
 DRAWN: G.A.
 CHECKED: J.M.
 APPROVED: J.M.

JOB NO. 10466
 DRAWING NO. M-06053
 SHEET NO. 7

SECTION
 D
 LOOKING SOUTH
 (SEE DWG. M-06053)
 THIRD M-06053



I certify that the design contained on this drawing was made in the normal and regular course of business, and that I am a duly licensed professional engineer in the State of Maryland, and that I am a duly registered professional engineer in the State of Maryland.

820090028

PDR RIDS

