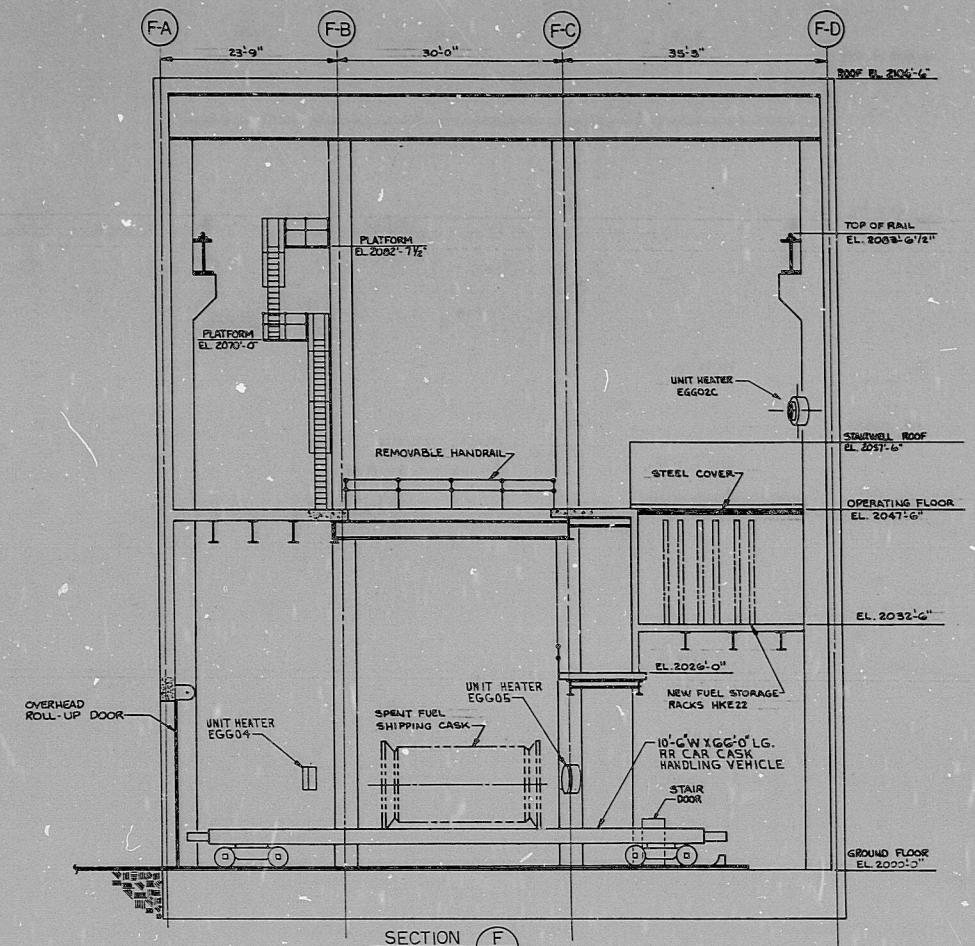
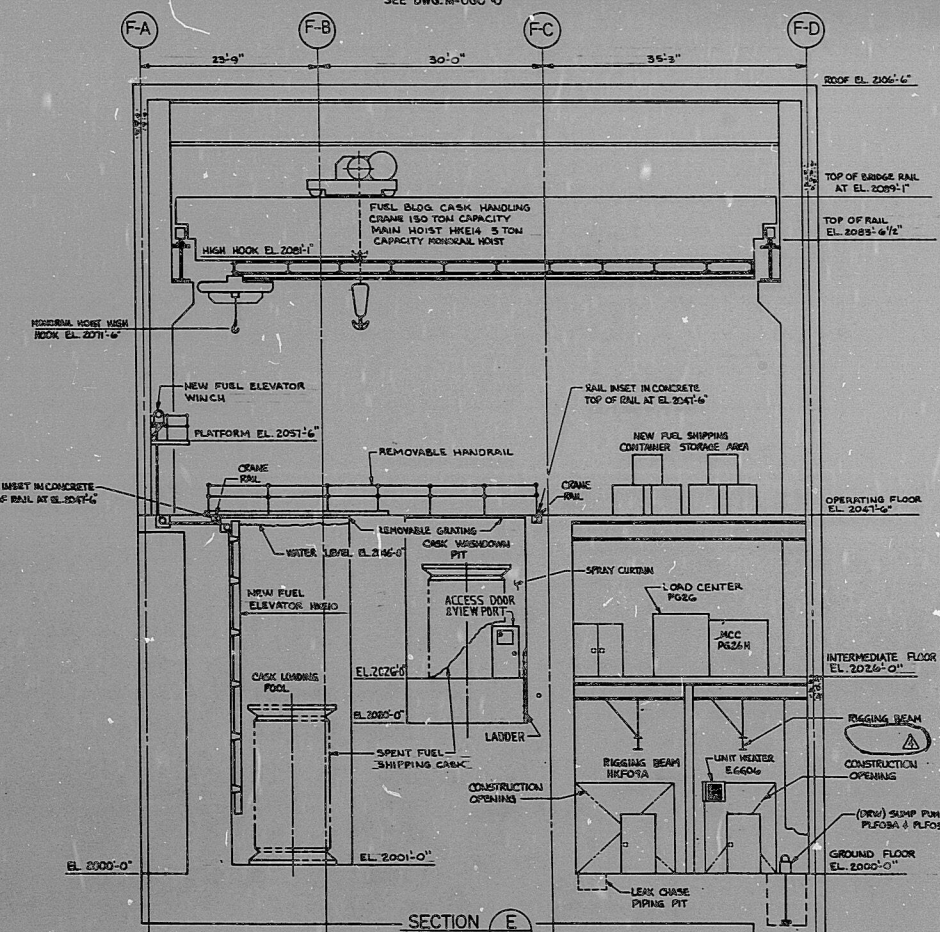


SECTION D
LOOKING SOUTH M-06042
SEE DWG. M-06040



SECTION F
LOOKING SOUTH M-06042
SEE DWG. M-06040



SECTION E
LOOKING SOUTH M-06042
SEE DWG. M-06040

II
APERTURE
CARD

NOTICE: ALTERATION OF THIS DOCUMENT BY ANY PERSON OTHER THAN A LICENSED PROFESSIONAL ENGINEER OR A PERSON ACTING UNDER HIS OR HER DIRECT SUPERVISION IS ILLEGAL.

THE UNDERSIGNED HEREBY DISCLAIMS ANY RESPONSIBILITY FOR ANY PLANS, SPECIFICATIONS, ESTIMATES, PLATS, REPORTS, SURVEYS OR OTHER DOCUMENTS OR INSTRUMENTS RELATING TO OR INTENDED TO BE USED FOR ANY PART OR PARTS OF THE ENGINEERING PROJECT FOR OR IN CONNECTION WITH WHICH THIS DOCUMENT IS TO BE USED, EXCEPT SUCH PLANS, SPECIFICATIONS, ESTIMATES, PLATS, REPORTS, SURVEYS OR OTHER DOCUMENTS OR INSTRUMENTS AS BEAR THE SIGNATURE AND THE SEAL OF THE UNDERSIGNED.

STATE OF MARYLAND
LICENSED PROFESSIONAL ENGINEER

STATE OF NEW YORK
LICENSED PROFESSIONAL ENGINEER

STATE OF WISCONSIN
LICENSED PROFESSIONAL ENGINEER

1	2	3	4	5	6	7	8

NO.	DATE	REVISIONS	DESIGNED	DRAWN	CHKD	APP'D	BY
<p>BECHTEL GARFASBURG, MARYLAND</p> <p>SNUPPS EQUIPMENT LOCATIONS FUEL BUILDING SECTIONS D, E, & F</p>							
UTILITY DRAWING NO.							
JTS NO.	10466	RECHTEL DRAWING NO.	M-06042				
DRAWING APPLICABLE TO UNITS	1	2	3	4			

This drawing and the design it covers is the property of the Utilities which are participating in the SNUPPS Project. It is loaned to the borrower's company for use in connection with the Project. It shall not be reproduced, copied, loaned, established, or used except in the limited way and purpose use permitted by written consent given by the SNUPPS Utilities or its borrower.

11
17
11
98
85
10
17

SIZE E
H
F
E
D
C
B
A
11
8.5
11
17

8410090016

PDR AIDS

