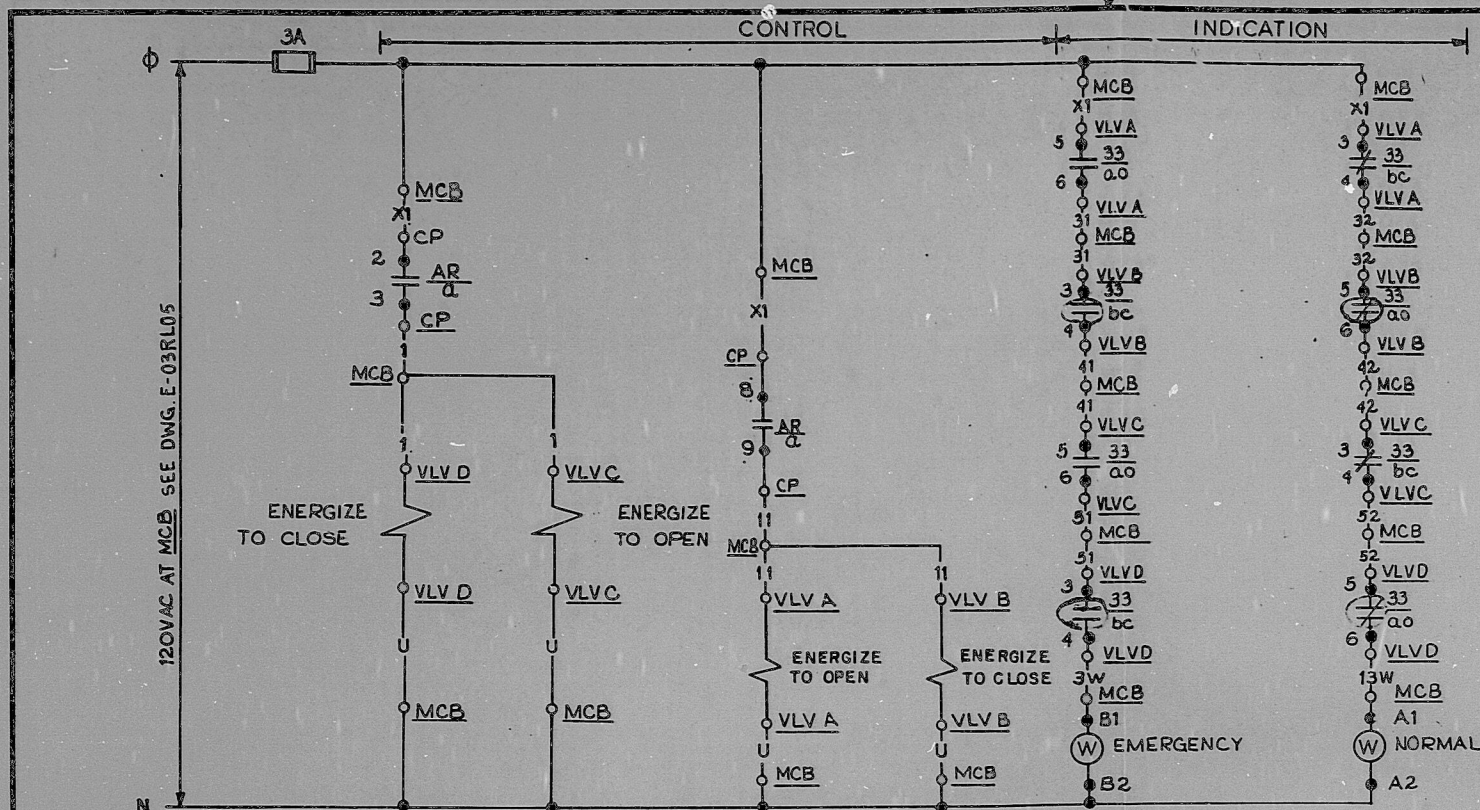


This drawing and the design it covers is the property of the Utilities which are participating in the SNUPPS Project. It is loaned on the borrower's express agreement that it will not be reproduced, copied, loaned, exhibited, or used except in the limited way and private use permitted by written consent given by the SNUPPS Utilities to the borrower.



EMERGENCY EMER NORM W W	CONTACT	POSITION	
		NATE 2	NORM EMER
	1-1-01T	X	X
	3-1-03T		X
	2-1-02B	X	X
	4-1-04B		X

CUTLER HAMMER  
TYPE E30 JY9  
WITH TWO KLA3  
CONTACT BLOCKS

HAND INDICATING SWITCH  
HIS-SEE TABLE  
MOMENTARY CONTACT

DEVICE 33 POSITION SWITCHES				
CLOSED POS.	CONTACT	VALVE POSITION		FUNCTION
		CLOSED	OPEN	
3	3-4	[Diagram]		IND. LIGHT THIS DWG.
		[Diagram]		
5	5-6	[Diagram]		IND. LIGHT THIS DWG.
		[Diagram]		

SOLID BAR INDICATES CONTACT CLOSED

REF. DWGS  
1. J-02GG14A  
2. M-02GG01  
3. J-02GG14B

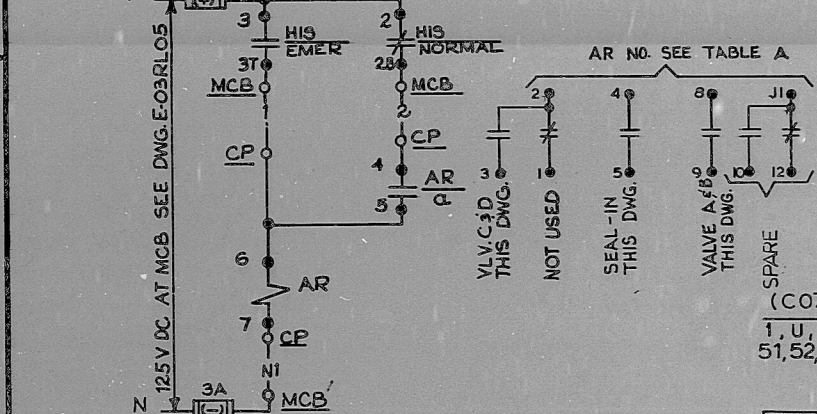
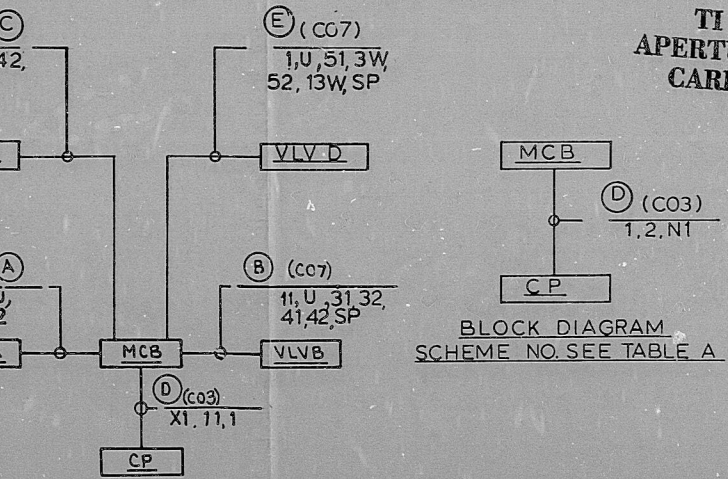


TABLE A

AUX. RELAY NO.	3XGG3	3XGG4
AUX. RELAY LOCATION - CP	RP139	RP140
HIS LOCATION - MCB	RL020	RL020
HIS NUMBER	GQHIS27	GQHIS28
SCHEME NO.	1GGK17A	4GGK17B

TABLE B

MCB LOC. - MCB	RL020	RL020
AR LOC. - CP	RP139	RP140
AR NO.	3XGG3	3XGG4
VLV LOC. - VLV D	GGRV27D	GGRV28D
VLV LOC. - VLV C	GGRV27C	GGRV28C
VLV LOC. - VLV B	GGRV27B	GGRV28B
VLV LOC. - VLV A	GGRV27A	GGRV28A
SCHEME NO.	1GGY17A	4GGY17B



TI  
APERTURE  
CARD

- SOLENOID COIL IS D.C. OPERATED VIA A VENDOR SUPPLIED RECTIFIER AND ZENER DIODE CIRCUIT. SEE BECHTEL V.P. NO. J-603A-0036 & J-603A-0038.
- CONTACT POSITION WHEN SWITCH IS IN ITS UNDEPRESSED OR 'SHELF' STATE.
- VALVE SHOWN IN NORMAL POSITION. (DEENERGIZED)

NOTES:

NO.	DATE	REVISIONS	CHK	DESIGN	ENGR	PROJ	ENGR
1		REV'D NOTE 3					
2		REMOVED GROUND					
3		REV'D WIRE NO.					
4		REV'D SCHM TO INC. DCNE 03GG17(Q) 9. COLAS BUILT CONDITION.					
5		ISSUED FOR CONSTRUCTION					

BECHTEL  
GAITHERSBURG, MARYLAND

SNUPPS

SCHEMATIC DIAGRAM  
SPENT FUEL POOL NORMAL/EMERGENCY  
EXHAUST RADIOACTIVITY SAMPLE VALVES

UTILITY DRAWING NO.		REV
JOB NO.		BECHTEL DRAWING NO.
10466		E-03GG17 (Q)
DRAWING APPLICABLE TO UNITS		REV
1 2 3 4 5 6 7 8		10

REVIEW LEVEL 3

I certify that the image contained on this frame was made in the normal and regular course of business, on the date stated below and that it is



8410050588

PDR RIDS

