

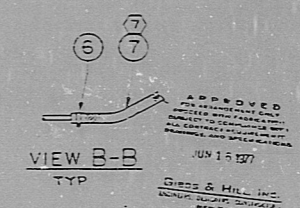
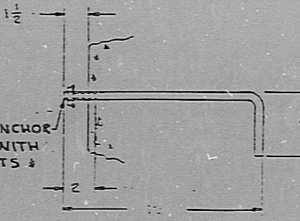
ITEM NO.	DESCRIPTION	TOTAL QUANTITY
1	HYDRAULIC SNUBBER ASSY	5
2	RESERVOIR ASSY	1
3	PIPE CLAMP 3/4"	10
4	CHANNEL (HOT DIP GALV.)	1
5	TUBE 3/4 O.D. x 0.049	5
6	HOSE CLAMP	10
7	HOSE 4'-0" LONG	5
8	FLUID (40 GAL)	1
9		
10	TEE	5
11	STRAIGHT	10
12	UNION	5
13	ELBOW	5

REV	DATE	BY	DESCRIPTION
1			

- NOTES:**
- PRIOR TO INSTALLATION OF SNUBBERS, TUBES, HOSES, ETC., REFER TO INSTALLATION, OPERATION & MAINTENANCE MANUAL FOR CLEANING, FLUSHING, FILLING & BLEEDING INSTRUCTIONS. DO NOT EXTEND PISTON UNTIL CONNECTED TO FLUID SUPPLY. SNUBBERS ARE SUPPLIED IN FULL RETRACT POSITION.
 - INSTALLATION CONTRACTOR TO DRILL PIPE CLAMP CHANNELS TO SUIT ANCHOR BOLTS (BY OTHERS). INSTALL APPROX 3'-0" APART, & APPROX 2" FROM TUBE FITTINGS.
 - ATTACH RESERVOIR TO WALL WITH 1/2" ANCHOR BOLTS (BY OTHERS) IN POSITION AS SHOWN.
 - FILL RESERVOIR TO THIS APPROX LEVEL AS SHOWN WITH ITEM 8 ONLY WHEN SNUBBER IS IN COLD POSITION.
 - REFILL WHEN FLUID IS AT THIS APPROX LEVEL WHEN SNUBBER IS IN HOT OR COLD POSITION.
 - ALL HORIZONTAL TUBE RUNS MUST SLOPE APPROX 1/8" PER FOOT DOWN, AWAY FROM RESERVOIR.

7 CUT HOSES TO LENGTH AS REQD TO PREVENT SAG AFTER INSTALLATION.

SECTION A-A
(TYP 8 PLACES)
SCALE 1/2"



RECEIVED
1-13-57
GARDNER & HILL, INC.

TEXAS UTILITIES SERVICES, INC.
COMANCHE PEAK STEAM ELECTRIC STATION
CERTIFICATION LETTER NO. 95-1122
AUTHORITY: D. NEUBY
ENCL. 428, INC. 87/52-17457

WESTINGHOUSE NES
546-CAN-236051-BP
COMANCHE PEAK T&E T&C
PMH JOB NO. 57502N

PRC
APERTURE
CARD

FOR ENGINEERING
AND
OFFICE USE ONLY

TEXAS UTILITIES
SERVICES INC.

INSTALLATION -
SNUBBERS & RESERVOIR

NO.	DATE	BY	DESCRIPTION
1			

8306100155

RIDS

8306100155

