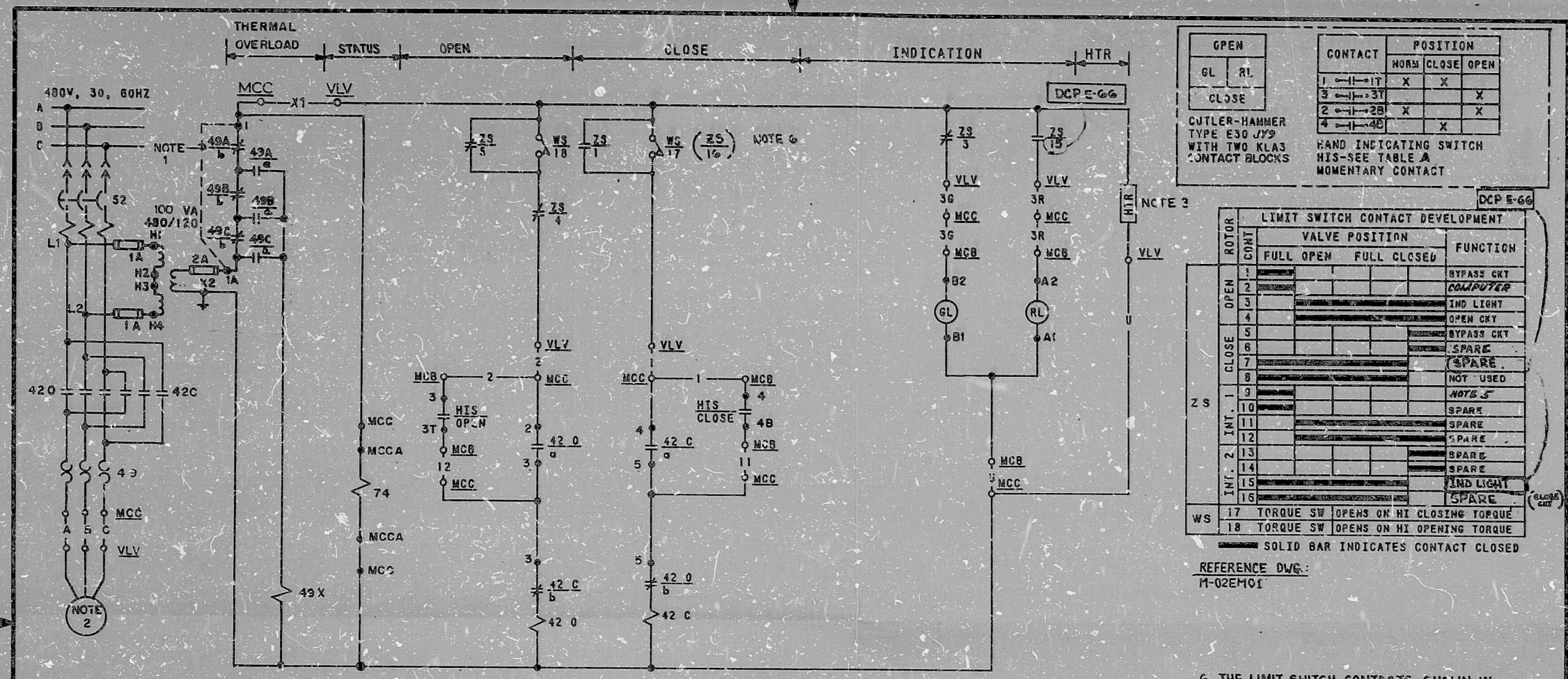


This drawing and the design it covers is the property of the utilities which are participating in the SNUPPS Project. It is loaned to the borrower's express agreement that it will not be reproduced, copied, loaned, exhibited, or used except in the limited way and private use permitted by written consent given by the SNUPPS Utilities to the Borrower.



OPEN		CONTACT		POSITION		
GL	RL			NORM	CLOSE	OPEN
1	1-1	X	X			
2	2-2	X	X			
3	3-3					
4	4-4					

CUTLER-HAMMER TYPE E30 JY9 WITH TWO KLA3 CONTACT BLOCKS

HAND INDICATING SWITCH HIS-SEE TABLE A MOMENTARY CONTACT

LIMIT SWITCH CONTACT DEVELOPMENT				
ROTOR	CONT	VALVE POSITION		FUNCTION
		FULL OPEN	FULL CLOSED	
OPEN	1			BYPASS CRT
	2			COMPUTER
	3			IND LIGHT
	4			OPEN CRT
CLOSE	5			BYPASS CRT
	6			SPARE
	7			SPARE
	8			NOT USED
ZS	9			NOT USED
	10			SPARE
	11			SPARE
	12			SPARE
	13			SPARE
	14			SPARE
	15			IND LIGHT
	16			SPARE
WS	17	TORQUE SW OPENS ON HI CLOSING TORQUE		
	18	TORQUE SW OPENS ON HI OPENING TORQUE		

SOLID BAR INDICATES CONTACT CLOSED

REFERENCE DWG: M-02EM01

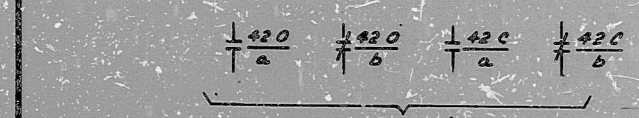
- THE LIMIT SWITCH CONTACTS SHOWN IN PARENTHESES ARE FOR SCHEMES 1EM611A AND 4EM611B.
- TO STATUS PANEL, SEE TABLE A.
- FOR CABLE CODE INFORMATION, SEE TABLE A.
- HEATER 40 WATTS, MANUFACTURER TYPE WARD LEONARD P/N 405 OR EQUAL.
- SEE TABLE FOR HORSEPOWER.
- JUMPER TO BE INSTALLED PRIOR TO CORE LOADING.

NOTES:

NO.	DATE	REVISIONS	BY	CHK	DESIGN	ENGR	PIECE	FILE
1	3/1/73	REV'D LIM SW CONTACT DEV TO INC DCP 5-66						
2	3/1/73	REV'D LIM SW CONTACTS FOR SCHEMES 1EM611A & 4EM611B TO INCORP. 3-1-73						
3	3/1/73	ISSUED FOR CONSTRUCTION						

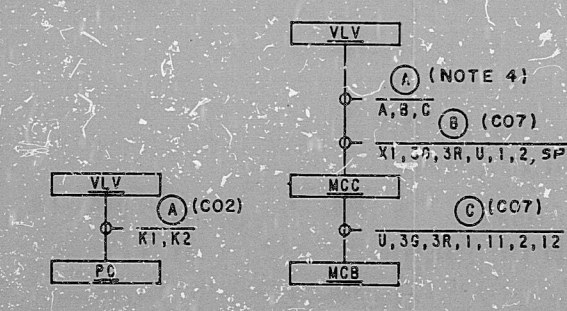
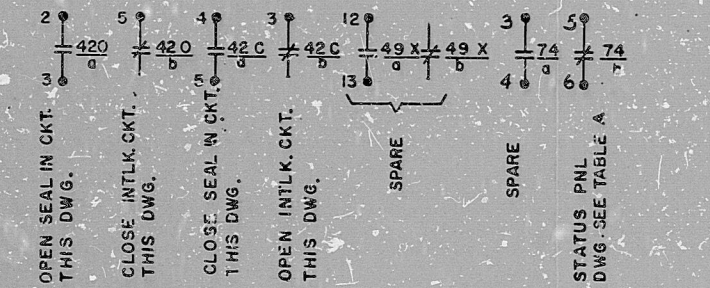
SCALE: DESIGNED CAP SPAN CAD CHECKED

BECHTEL GAITHERSBURG, MARYLAND	
SNUPPS	
SCHEMATIC DIAGRAM SAFETY INJECTION PUMP TO COLD LEG MOV, CHARGING PUMP & S.I. PUMP CONNECTION	
PLANT NO.	REV
10488	6



COMPUTER REF DWG.	J-106-0115	J-106-0115	J-106-0115
COMPUTER POINT	EMZ8821A	EMZ8821B	EMZ8924
COMPUTER POINT-PC	RJ159A	RJ160A	RJ160A
VALVE NO.-VLV	EMHV8821A	EMHV8821B	EMHV8924
COMPUTER SCHEME	1EM11A	4EM11B	4EM11C

74/5 STATUS PNL DWG	E-03SA06	E-03SA09	E-03SA09
74/6 STATUS PNL DWG	E-03SA04	E-03SA05	E-03SA05
CABLE CODE	631	631	631
MCCA LOC-MCCA	NG01ADP1	NG02AEF1	NG02AEF1
HORSEPOWER	1.9	1.9	0.67
HIS NUMBER	EMHIS 8821A	EMHIS 8821B	EMHIS 8924
MCC LOCATION-MCC	NG01ADRI	NG02AGR2	NG02AER2
HIS LOCATION-MCB	RL017	RL017	RL017
VALVE NO.-VLV	EMHV8821A	EMHV8821B	EMHV8924
SCHEME NO.	1EM11A	4EM11B	4EM11C



PLANT COMPUTER BLOCK DIAGRAM SCHEME NO. SEE TABLE B

BLOCK DIAGRAM SCHEME NO. SEE TABLE A

REVIEW LEVEL 3

I certify that the info contained on this frame was made in the normal and regular course of business, on the date stated below and that it is an accurate reproduction of the document(s) submitted to Micrographics.
DATE: 7-83 OPERATOR: *Brandon Lewis* SUPERVISOR: *Alvin Reed*

16X

8410050520

PDR RIDS

