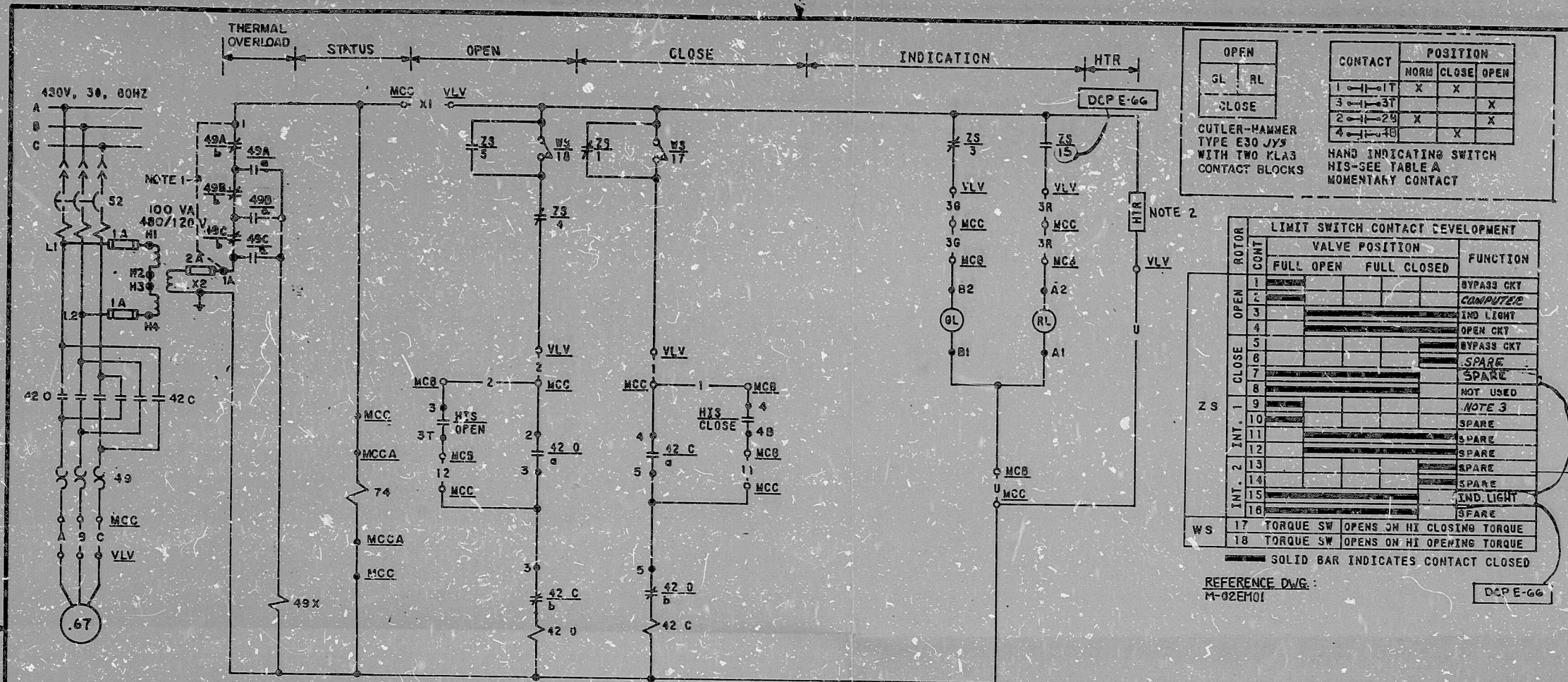


This drawing and the design it covers is the property of the utilities which are participating in the SNUPPS Project. It is loaned on the borrower's express agreement that it will not be reproduced, copied, loaned, exhibited, or used except in the limited way and private use permitted by the SNUPPS utilities to the borrower.



OPEN		POSITION	
GL	RL	NORM	CLOSE OPEN
1	1-11T	X	X
3	1-3T	X	X
2	1-25	X	X
4	1-48	X	X

CUTLER-HAMMER TYPE E30 JYS WITH TWO KLAS CONTACT BLOCKS

HAND INDICATING SWITCH HIS-SEE TABLE A MOMENTARY CONTACT

ROTOR CONT	LIMIT SWITCH CONTACT DEVELOPMENT		FUNCTION
	FULL OPEN	FULL CLOSED	
1			BYPASS CKT
2			COMPUTER
3			IND LIGHT
4			OPEN CKT
5			BYPASS CKT
6			SPARE
7			SPARE
8			NOT USED
9			NOTE 3
10			SPARE
11			SPARE
12			SPARE
13			SPARE
14			SPARE
15			IND LIGHT
16			SPARE
17			TORQUE SW OPENS ON HI CLOSING TORQUE
18			TORQUE SW OPENS ON HI OPENING TORQUE

SOLID BAR INDICATES CONTACT CLOSED

REFERENCE DWG: M-02EM01

TI APERTURE CARD

- 3. TO STATUS PANEL, SEE DWG. E-03SA05
- 2. HEATER 40 WATTS, MANUFACTURER TYPE WARD LEONARD P/N 40S OR EQUAL
- 1. JUMPER TO BE INSTALLED PRIOR TO CORE LOADING.

NOTES

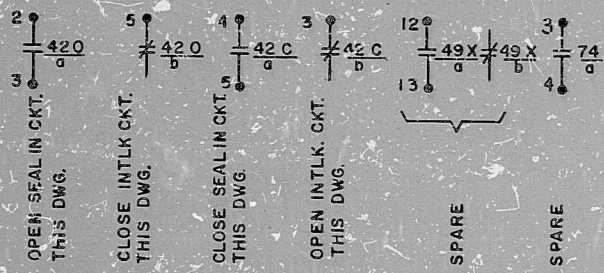
NO.	DATE	REVISIONS	BY	CHK	REV	ERR	ERR
1	7/1/83	REV'D LIMIT SW. CONT. FUNC.	JH	WPC	180		
2	7/1/83	REV'D LIMIT SWITCH CONTACT DEV. TO INC. DCP E-66	JH	WPC	180		
3	7/1/83	ISSUED FOR CONSTRUCTION	JH	WPC	180		

TABLE B

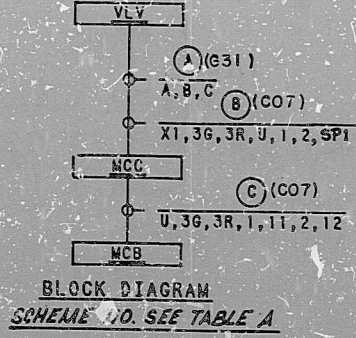
COMPUTER REF. DWG. BECHTEL V.P. NO.	J-106-0115	J-106-0115
COMPUTER POINT	EMZ8923B	EMZ8923A
COMPUTER LOCATION-PC	RJ100A	RJ189A
VALVE LOCATION-VLV	EMHV8923B	EMHV8923A
COMPUTER SCHEME	4EMR03A	1EMR09B

TABLE A

74/D STATUS P.L. DWG	E-03SA09	E-03SA08
MCCA LOC-MCCA	NG02AEF1	NG01ACF1
HIS NO.	EMH5C923B	EMH5B923A
MCC LOCATION-MCC	NG02AGRI	NG01ADR2
HIS LOCATION-MCB	6L017	R1017
VALVE NO-VLV	EMHV8923B	EMHV8923A
SCHEME NO.	4EMG09A	1EMG09B



PLANT COMPUTER BLOCK DIAGRAM SCHEME NO. SEE TABLE B



REVIEW LEVEL 3

I certify that the image contained on this frame was made in the normal and regular course of business, on the date stated below and that it is an accurate reproduction of the document(s) submitted to Micrographics.
DATE 9-9-83 OPERATOR *Richard Lewis* SUPERVISOR *William M. Mee*

8410050508

PDR RIDS

