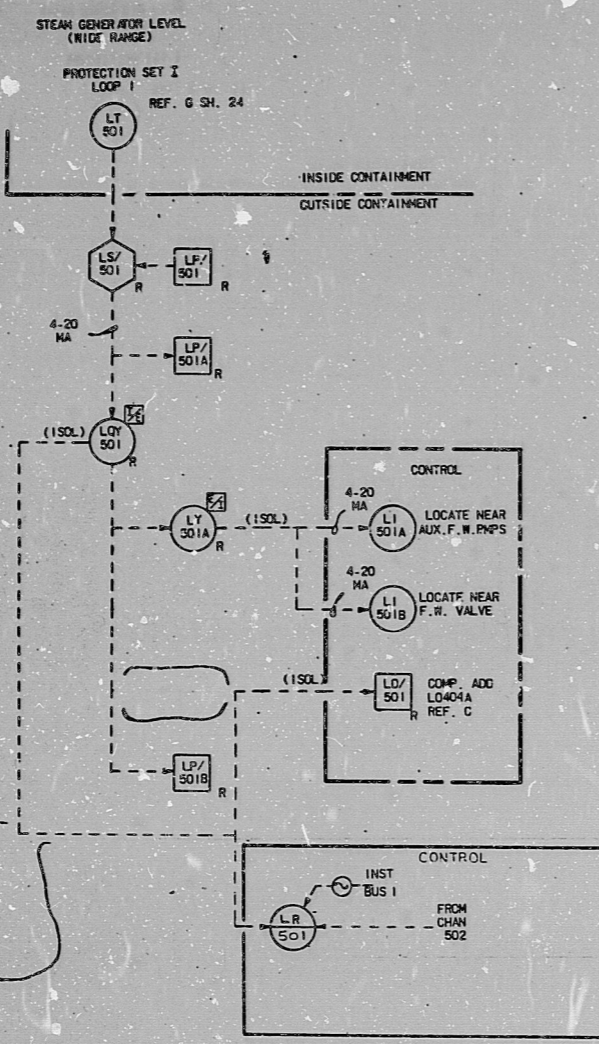


66
66
66
85"
11"

66
66
66
8.5"
11"



PROTECTION SET	LOOP	CHANNEL NO.	COMP. ADD.	RECORDER INST. BUS
I	1	501	L0404A	LR501 (1)
II	2	502	L0424A	LR501 (1)
III	3	503	L0444A	LR503 (3)
IV	4	504	L0464A	LR503 (3)

TERA
APERTURE
CARD

INFORMATION
THIS DOCUMENT IS
SUBJECT TO RESTRICTIONS
WITHOUT INTERFERING
WITH THE USER OF THIS
COPY

WESTINGHOUSE PRODUCT
UNITS: 1 AND 2 ITEM 03
STATUS: APPROVED
CERTIFICATION LETTER NO. ST-MN-SR-1576
AUTHORITY: A. T. PARKER
ENGR. LTR. NO. EP/SA-26073

STEAM GENERATOR LIQUID LEVELS
WIDE RANGE
PROTECTION SET I, II, III, IV

1
2
3
4
5
6
7
8
9
10
11

NOTES
(SEE SH. 1 FOR GENERAL NOTES AND REFERENCES)

DATE: 12-31-53
M. S. HARBONAK
DES. ENG. [Signature]
TITLE: TGX/THX PROCESS CONTROL SYSTEMS BLOCK DIAGRAMS
SCALE: 8758D76
SHEET 6
DO NOT SCALE

366 D 24 I C B A A O W A V B C I 24 ID 336

17"

RIDS

8/12080/20

