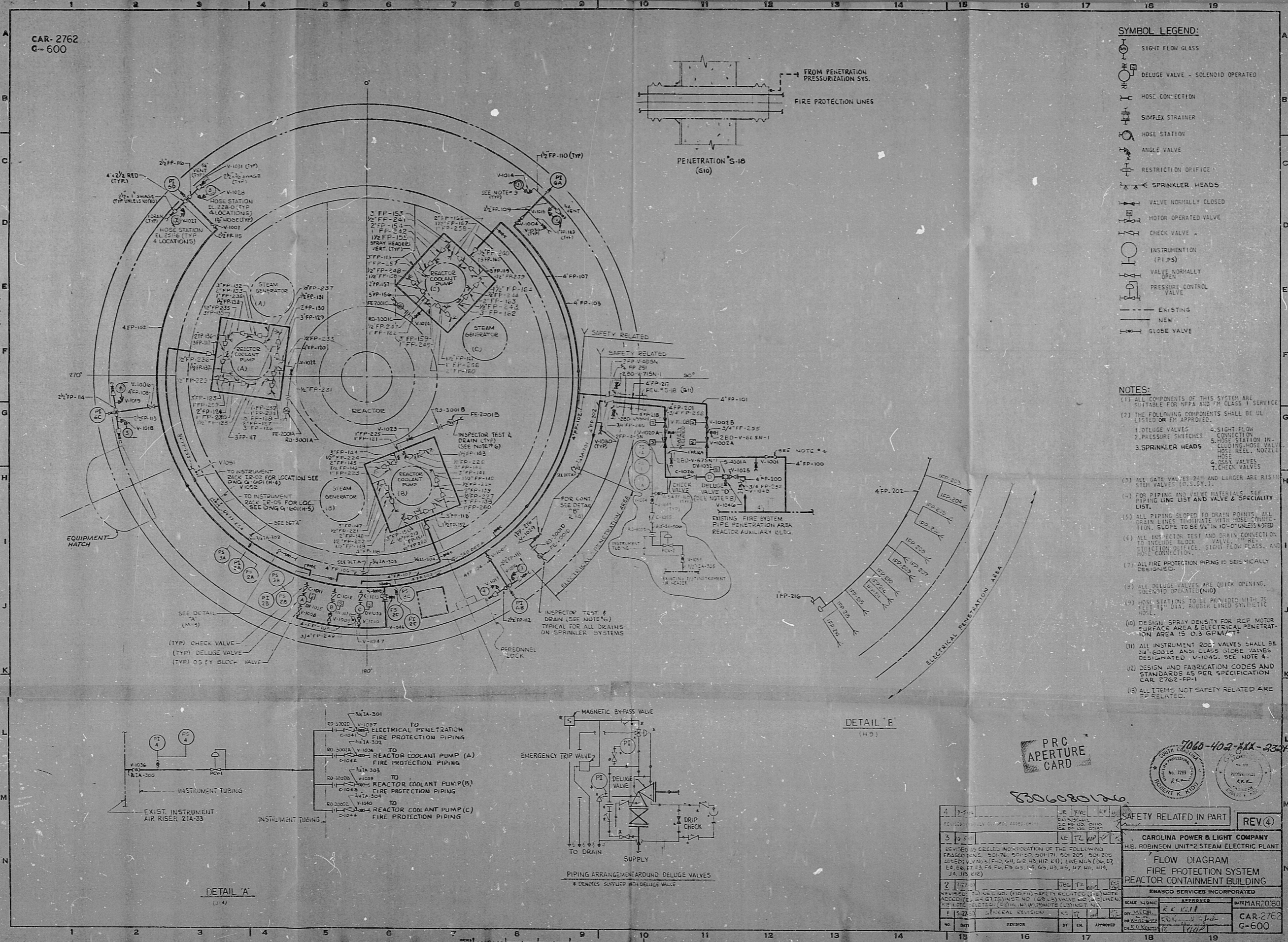


CAR-2762
G-600

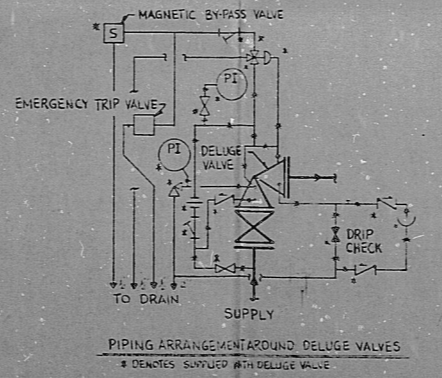
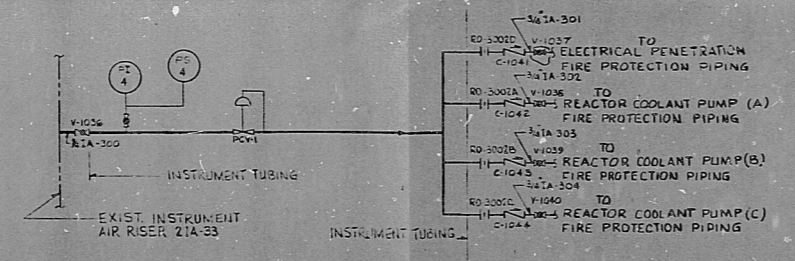
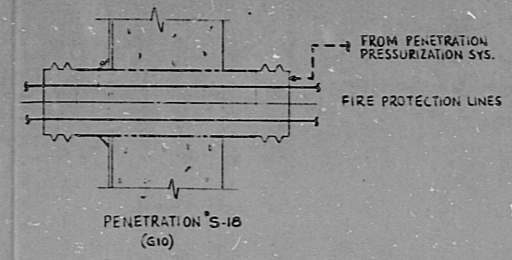


SYMBOL LEGEND:

- SIGHT FLOW GLASS
- DELUGE VALVE - SOLENOID OPERATED
- HOSE CONNECTION
- SIMPLEX STRAINER
- HOSE STATION
- ANGLE VALVE
- RESTRICTION ORIFICE
- SPRINKLER HEADS
- VALVE NORMALLY CLOSED
- MOTOR OPERATED VALVE
- CHECK VALVE
- INSTRUMENT CONNECTION (P.I.P.S.)
- VALVE NORMALLY OPEN
- PRESSURE CONTROL VALVE
- EXISTING
- NEW
- GLOBE VALVE

NOTES:

- (1) ALL COMPONENTS OF THIS SYSTEM ARE SUITABLE FOR NFPA AND FM CLASS 1 SERVICE.
- (2) THE FOLLOWING COMPONENTS SHALL BE UL LISTED OR FM APPROVED.
 - 1. DELUGE VALVES
 - 2. PRESSURE SWITCHES
 - 3. SPRINKLER HEADS
 - 4. SIGHT FLOW CONNECTION
 - 5. HOSE STATION INCLUDING HOSE VALVE, HOSE REEL, NOZZLE HOSE
 - 6. CHECK VALVES
 - 7. CHECK VALVES
- (3) ALL GATE VALVES 24" AND LARGER ARE RISING STEM VALVES (R.S.V.).
- (4) FOR PIPING AND VALVE MATERIALS SEE PIPING LINE LIST AND VALVE & SPECIALTY LIST.
- (5) ALL PIPING SLOPE TO DRAIN POINTS. ALL DRAIN LINES TERMINATE WITH HOSE CONNECTION. SLOPE TO BE 1/4" IN 10'-0" UNLESS NOTED.
- (6) ALL INSPECTION TEST AND DRAIN CONNECTIONS TO INCLUDE GLOBE VALVE, RESTRICTION ORIFICE, SIGHT FLOW GLASS, AND HOSE CONNECTION.
- (7) ALL FIRE PROTECTION PIPING IS SEISMICALLY DESIGNATED.
- (8) ALL DELUGE VALVES ARE QUICK OPENING, SOLENOID OPERATED (N.O.).
- (9) HOSE STATIONS TO BE PROVIDED WITH 75 FEET 1 1/2" DIA. RUBBER LINED SYNTHETIC HOSE.
- (10) DESIGN SPRAY DENSITY FOR RCP MOTOR SURFACE AREA & ELECTRICAL PENETRATION AREA IS 0.3 GPM/FT².
- (11) ALL INSTRUMENT ROOT VALVES SHALL BE 24" GLOBE AND CLASS GLOBE VALVES DESIGNATED V-1045. SEE NOTE 4.
- (12) DESIGN AND FABRICATION CODES AND STANDARDS AS PER SPECIFICATION CAR 2762-FP-1.
- (13) ALL ITEMS NOT SAFETY RELATED ARE FP RELATED.



PRC APERTURE CARD

8306880126



NO.	DATE	BY	CHK.	APPROVED
1	11/22/77	GENERAL REVISION	AS	PK
2	1/27/78	REVISED TO AS PER (P) (H) (I) SAFETY RELATED (A) (D) (E) (F) (G) (H) (J) (K) (L) (M) (N) (O) (P) (Q) (R) (S) (T) (U) (V) (W) (X) (Y) (Z) (AA) (AB) (AC) (AD) (AE) (AF) (AG) (AH) (AI) (AJ) (AK) (AL) (AM) (AN) (AO) (AP) (AQ) (AR) (AS) (AT) (AU) (AV) (AW) (AX) (AY) (AZ) (BA) (BB) (BC) (BD) (BE) (BF) (BG) (BH) (BI) (BJ) (BK) (BL) (BM) (BN) (BO) (BP) (BQ) (BR) (BS) (BT) (BU) (BV) (BW) (BX) (BY) (BZ) (CA) (CB) (CC) (CD) (CE) (CF) (CG) (CH) (CI) (CJ) (CK) (CL) (CM) (CN) (CO) (CP) (CQ) (CR) (CS) (CT) (CU) (CV) (CW) (CX) (CY) (CZ) (DA) (DB) (DC) (DD) (DE) (DF) (DG) (DH) (DI) (DJ) (DK) (DL) (DM) (DN) (DO) (DP) (DQ) (DR) (DS) (DT) (DU) (DV) (DW) (DX) (DY) (DZ) (EA) (EB) (EC) (ED) (EE) (EF) (EG) (EH) (EI) (EJ) (EK) (EL) (EM) (EN) (EO) (EP) (EQ) (ER) (ES) (ET) (EU) (EV) (EW) (EX) (EY) (EZ) (FA) (FB) (FC) (FD) (FE) (FF) (FG) (FH) (FI) (FJ) (FK) (FL) (FM) (FN) (FO) (FP) (FQ) (FR) (FS) (FT) (FU) (FV) (FW) (FX) (FY) (FZ) (GA) (GB) (GC) (GD) (GE) (GF) (GG) (GH) (GI) (GJ) (GK) (GL) (GM) (GN) (GO) (GP) (GQ) (GR) (GS) (GT) (GU) (GV) (GW) (GX) (GY) (GZ) (HA) (HB) (HC) (HD) (HE) (HF) (HG) (HH) (HI) (HJ) (HK) (HL) (HM) (HN) (HO) (HP) (HQ) (HR) (HS) (HT) (HU) (HV) (HW) (HX) (HY) (HZ) (IA) (IB) (IC) (ID) (IE) (IF) (IG) (IH) (II) (IJ) (IK) (IL) (IM) (IN) (IO) (IP) (IQ) (IR) (IS) (IT) (IU) (IV) (IW) (IX) (IY) (IZ) (JA) (JB) (JC) (JD) (JE) (JF) (JG) (JH) (JI) (JJ) (JK) (JL) (JM) (JN) (JO) (JP) (JQ) (JR) (JS) (JT) (JU) (JV) (JW) (JX) (JY) (JZ) (KA) (KB) (KC) (KD) (KE) (KF) (KG) (KH) (KI) (KJ) (KK) (KL) (KM) (KN) (KO) (KP) (KQ) (KR) (KS) (KT) (KU) (KV) (KW) (KX) (KY) (KZ) (LA) (LB) (LC) (LD) (LE) (LF) (LG) (LH) (LI) (LJ) (LK) (LL) (LM) (LN) (LO) (LP) (LQ) (LR) (LS) (LT) (LU) (LV) (LW) (LX) (LY) (LZ) (MA) (MB) (MC) (MD) (ME) (MF) (MG) (MH) (MI) (MJ) (MK) (ML) (MN) (MO) (MP) (MQ) (MR) (MS) (MT) (MU) (MV) (MW) (MX) (MY) (MZ) (NA) (NB) (NC) (ND) (NE) (NF) (NG) (NH) (NI) (NJ) (NK) (NL) (NM) (NO) (NP) (NQ) (NR) (NS) (NT) (NU) (NV) (NW) (NX) (NY) (NZ) (OA) (OB) (OC) (OD) (OE) (OF) (OG) (OH) (OI) (OJ) (OK) (OL) (OM) (ON) (OO) (OP) (OQ) (OR) (OS) (OT) (OU) (OV) (OW) (OX) (OY) (OZ) (PA) (PB) (PC) (PD) (PE) (PF) (PG) (PH) (PI) (PJ) (PK) (PL) (PM) (PN) (PO) (PP) (PQ) (PR) (PS) (PT) (PU) (PV) (PW) (PX) (PY) (PZ) (QA) (QB) (QC) (QD) (QE) (QF) (QG) (QH) (QI) (QJ) (QK) (QL) (QM) (QN) (QO) (QP) (QQ) (QR) (QS) (QT) (QU) (QV) (QW) (QX) (QY) (QZ) (RA) (RB) (RC) (RD) (RE) (RF) (RG) (RH) (RI) (RJ) (RK) (RL) (RM) (RN) (RO) (RP) (RQ) (RR) (RS) (RT) (RU) (RV) (RW) (RX) (RY) (RZ) (SA) (SB) (SC) (SD) (SE) (SF) (SG) (SH) (SI) (SJ) (SK) (SL) (SM) (SN) (SO) (SP) (SQ) (SR) (SS) (ST) (SU) (SV) (SW) (SX) (SY) (SZ) (TA) (TB) (TC) (TD) (TE) (TF) (TG) (TH) (TI) (TJ) (TK) (TL) (TM) (TN) (TO) (TP) (TQ) (TR) (TS) (TT) (TU) (TV) (TW) (TX) (TY) (TZ) (UA) (UB) (UC) (UD) (UE) (UF) (UG) (UH) (UI) (UJ) (UK) (UL) (UM) (UN) (UO) (UP) (UQ) (UR) (US) (UT) (UU) (UV) (UW) (UX) (UY) (UZ) (VA) (VB) (VC) (VD) (VE) (VF) (VG) (VH) (VI) (VJ) (VK) (VL) (VM) (VN) (VO) (VP) (VQ) (VR) (VS) (VT) (VU) (VV) (VW) (VX) (VY) (VZ) (WA) (WB) (WC) (WD) (WE) (WF) (WG) (WH) (WI) (WJ) (WK) (WL) (WM) (WN) (WO) (WP) (WQ) (WR) (WS) (WT) (WU) (WV) (WW) (WX) (WY) (WZ) (XA) (XB) (XC) (XD) (XE) (XF) (XG) (XH) (XI) (XJ) (XK) (XL) (XM) (XN) (XO) (XP) (XQ) (XR) (XS) (XT) (XU) (XV) (XW) (XX) (XY) (XZ) (YA) (YB) (YC) (YD) (YE) (YF) (YG) (YH) (YI) (YJ) (YK) (YL) (YM) (YN) (YO) (YP) (YQ) (YR) (YS) (YT) (YU) (YV) (YW) (YX) (YZ) (ZA) (ZB) (ZC) (ZD) (ZE) (ZF) (ZG) (ZH) (ZI) (ZJ) (ZK) (ZL) (ZM) (ZN) (ZO) (ZP) (ZQ) (ZR) (ZS) (ZT) (ZU) (ZV) (ZW) (ZX) (ZY) (ZZ)		

SAFETY RELATED IN PART	REV 4
CAROLINA POWER & LIGHT COMPANY H.B. ROBINSON UNIT-2 STEAM ELECTRIC PLANT	
FLOW DIAGRAM FIRE PROTECTION SYSTEM REACTOR CONTAINMENT BUILDING	
EBS&CO SERVICES INCORPORATED	
SCALE: NONE	DATE: MAR 20 1980
BY: MECH. R. K. KUYLENSTIERNA	CAR-2762
CH: E. D. KUYLENSTIERNA	G-600

RIDS

8306080126

