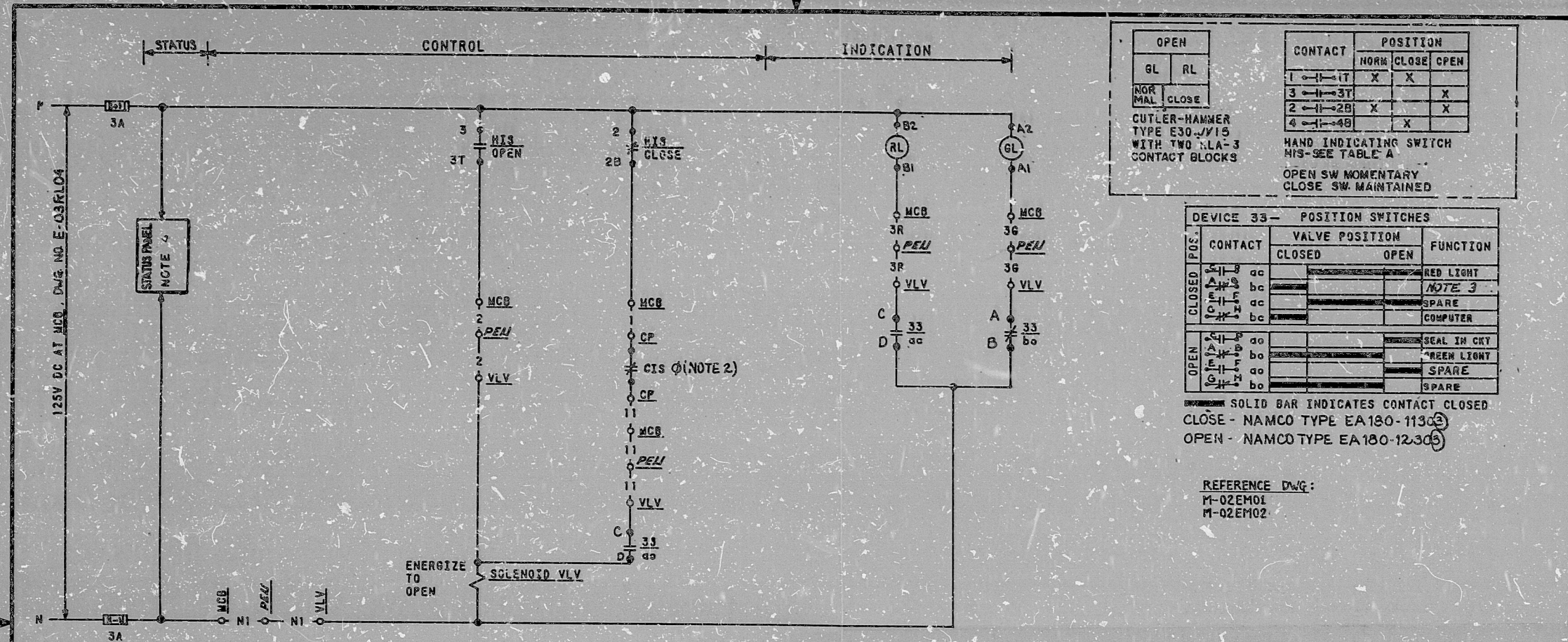


This drawing and the design it covers is the property of the utilities which are participating in the SUPPS Project. It is loaned to the borrower's express agreement that it will not be reproduced, copied, loaned, exhibited, or used except in the limited way and private use permitted by written consent given by the SUPPS Utilities to the borrower.



OPEN		POSITION			
GL	RL	CONTACT	NORM	CLOSE	OPEN
		1-1T	X	X	
NOR		3-1-3T			X
MAL	CLOSE	2-1-2B	X		X
		4-1-4B		X	

CUTLER-HAMMER TYPE E30-VV15 WITH TWO LA-3 CONTACT BLOCKS

HAND INDICATING SWITCH HIS-SEE TABLE A

OPEN SW MOMENTARY
CLOSE SW MAINTAINED

DEVICE 33 - POSITION SWITCHES				
POS.	CONTACT	VALVE POSITION		FUNCTION
		CLOSED	OPEN	
CLOSED	1-1-1a			RED LIGHT
	1-1-1b			NOTE 3
	1-1-1c			SPARE
OPEN	1-1-2a			COMPUTER
	1-1-2b			SEAL IN CKY
	1-1-2c			GREEN LIGHT
SPARE	1-1-3a			SPARE
	1-1-3b			SPARE
	1-1-3c			SPARE

SOLID BAR INDICATES CONTACT CLOSED
CLOSE - NAMCO TYPE EA180-1130(2)
OPEN - NAMCO TYPE EA180-1230(5)

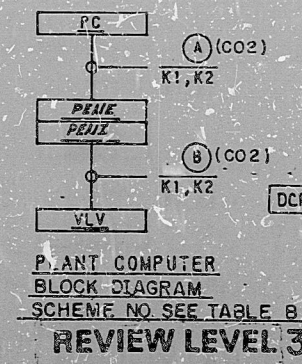
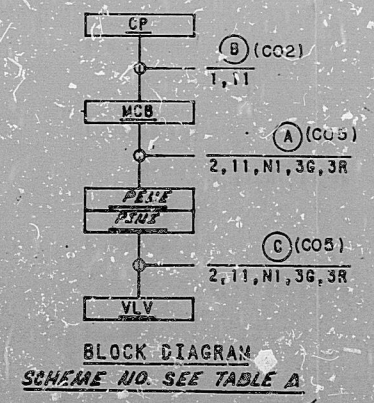
REFERENCE DWG:
M-02EM01
M-02EM02

TABLE B

COMPUTER REF. DWG. BECHTEL V.P. NO.	J-106-0115	J-106-0115	J-106-0115	J-106-0115
PENETRATION-PEN	ZNE278	ZNE278	ZNE278	ZSE234
COMPUTER POINT	EMZ8823	EMZ8824	EMZ8881	EMZ8871
COMPUTER LOC-PC	RJ159A	RJ159A	RJ159A	RJ180A
VALVE NO.-VLV	EMHV8823	EMHV8824	EMHV8881	EMHV8871
COMPUTER SCHEME	IEMR04A	IEMR04B	IEMR04D	4EMR04E

TABLE A

STATUS PNL DWG (NOTE 4)	E-03SA13	E-03SA15	E-03SA15	E-03SA16
PENETRATION-PEN	ZNE278	ZNE278	ZNE278	ZSE234
S.S. PROT RELAY B CONTACT NO.	K623 7-6	K623 9-10	K622 9-10	K622 7-8
HIS NUMBER	EMHIS8823	EMHIS8824	EMHIS8881	EMHIS8871
HIS LOCATION-LOC	RL017	RL017	RL017	RL017
LOCATION-CP	SB029C	SB029C	SB029C	SB032C
VALVE NO.-VLV	EMHV8823	EMHV8824	EMHV8881	EMHV8871
SCHEME NO.	IEMR04A	IEMR04B	IEMR04D	4EMR04E



- FOR STATUS PANEL CABLE PULL REFERENCE DWG. NO. SEE TABLE A
- TO STATUS PANEL, SEE DWG E-03SA14
- CIS CONTACT OPENS ON CONTAINMENT ISOLATION. RELAY CONTACT NO. SEE TABLE FOR DETAILS. SEE WESTINGHOUSE CWS. BECHTEL VP. NO. M-767-181.

NOTES: 1. VALVE FAIL CLOSED.

NO.	DATE	REVISED BY	CHK	DESIGNED	ENGR	DRG	APP
1	1/24/74						
2	3/11/74						
3	7/2/74						

ISSUED FOR CONSTRUCTION TO INCORP DCP E-34

SCALE: DESIGNED CAP. 15000. CAD

BECHTEL
GAITHERSBURG, MARYLAND

SUPPS

SCHEMATIC DIAGRAM
SAFETY INJECTION PUMPS HOT
LEG TEST LINE + TEST LINE HEADER VALVES

PLANT COMPUTER
BLOCK DIAGRAM
SCHEME NO. SEE TABLE B
REVIEW LEVEL 3

WILEY DRAWING NO.	REV
10488	E-03EM04 (Q)

I certify that the image contained on this frame was made in the normal and regular course of business, on the date stated below and that it is an accurate reproduction of the document(s) submitted to Micrographics.
DATE 1-31-88 OPERATOR *[Signature]*

16X

8410050470

PDR RIDS

