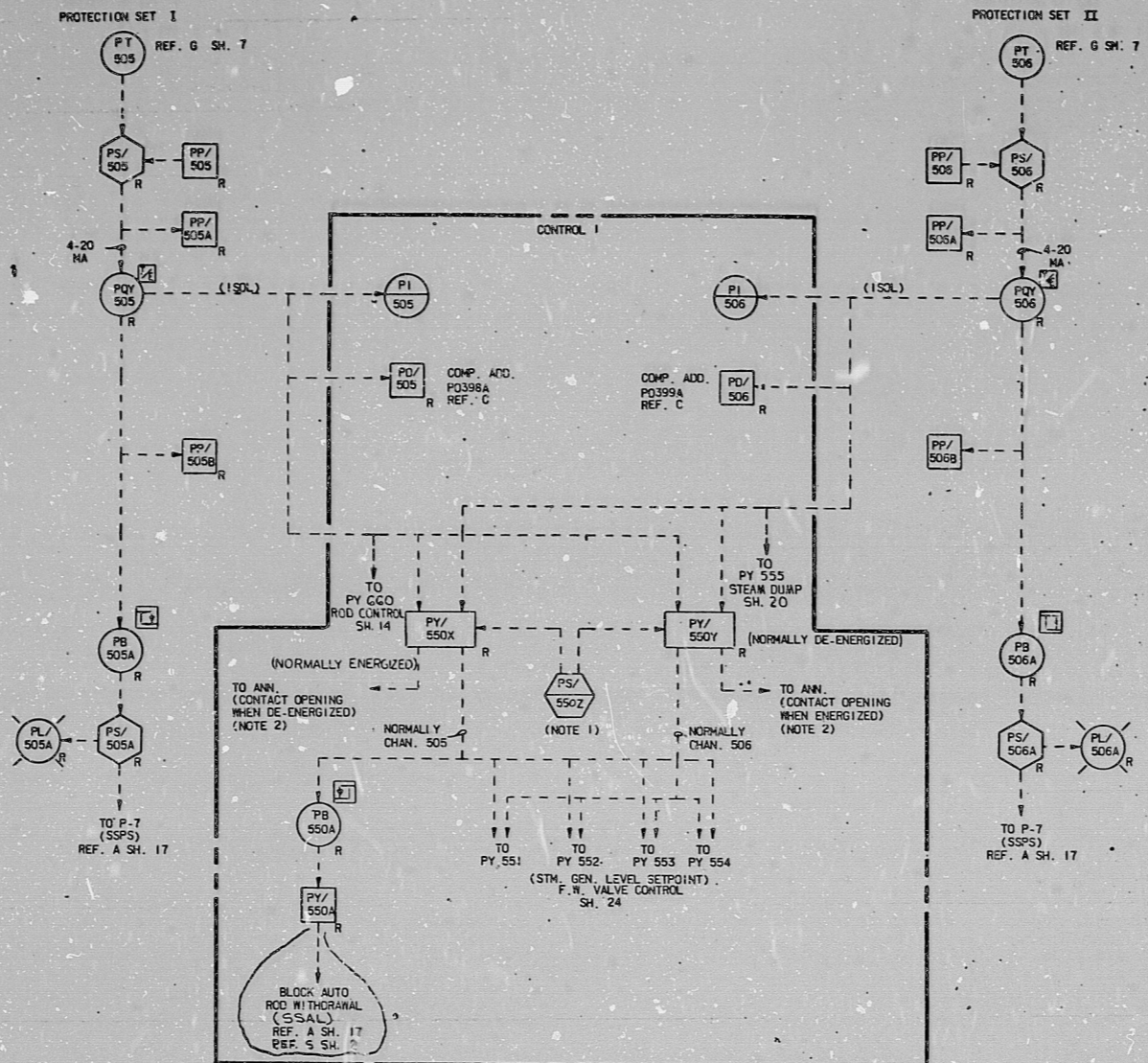


TURBINE IMPULSE CHAMBER PRESSURE



INFORMATION
THIS DOCUMENT IS
SUBJECT TO REVISION
WITHOUT NOTIFICATION
TO THE USER OF THIS
COPY

SHUYN TEXAS PROJECT
UNITS 1 AND 2
STATUS: APPROVED
CERTIFICATION LETTER NO. ST-WN-88-1476
AUTHORITY: A. T. PARKER
ENGR. LTR. NO. EP/SA-26078

TERA
APERTURE
CARD

TURBINE IMPULSE
CHAMBER PRESSURE
PROTECTION SETS I & II

1	1	1
2	2	2
3	3	3
4	4	4
5	5	5
6	6	6
7	7	7
8	8	8
9	9	9
10	10	10
11	11	11

NOTES:
(SEE SH. I FOR GENERAL NOTES AND REFERENCES)
1. 3 POSITION SWITCH - CENTER POSITION: AS SHOWN
LEFT POSITION: DE-ENERGIZE PY/550X AND PUT CHAN. 505 TO CONTROL
RIGHT POSITION: ENERGIZE PY/550Y AND PUT CHAN. 506 TO CONTROL
2. COMMON ANNUNCIATOR TO INDICATE TURBINE IMPULSE CHAMBER PRESSURE CHAN. OUT OF SERVICE

DESIGNED BY	M. E. HABERCHAK	DATE	10-28-78	WESTINGHOUSE ELECTRIC CORPORATION
CHECKED BY				NUCLEAR ENERGY SYSTEMS, PITTSBURGH, PA., U.S.A.
APP. BY				
DATE				
TITLE	TGA/THX PROCESS CONTROL SYSTEMS BLOCK DIAGRAMS			
SCALE	8758D76			
DIMENSIONS IN INCHES	SHEET 19			
DO NOT SCALE	SUB 22			

8.5"

8.5"

11" D
36"

11" D
36"

17"

17"

2129X14506 Wm

RIDS

8112080097

