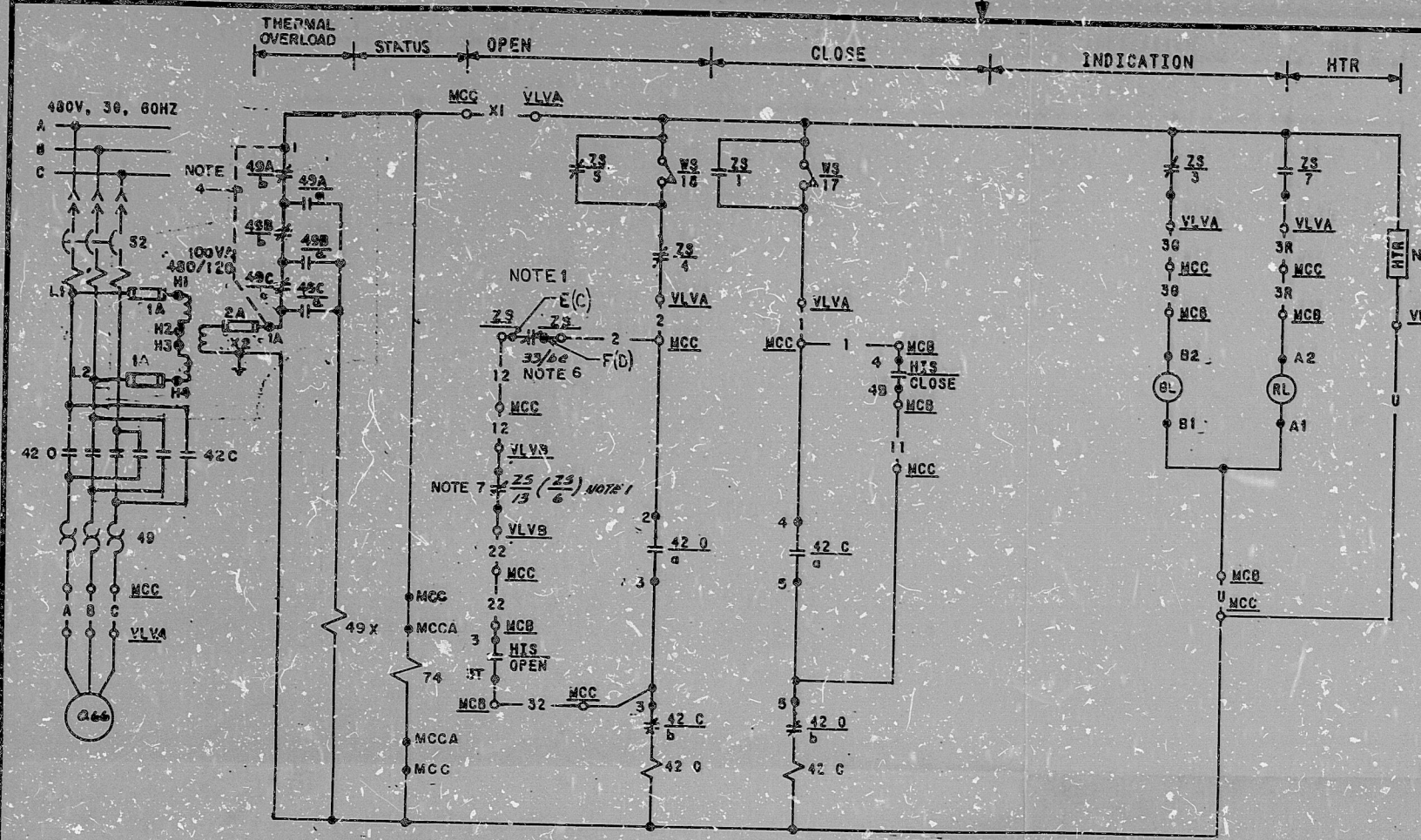


I certify that the image contained on this frame was made in the normal and regular course of business, on the date stated below and that it is an accurate reproduction of the document(s) submitted to Micrographics. DATE 11-18-82 OPERATOR J. J. ...



OPEN		CONTACT		POSITION		
GL	RL			NORM	CLOSE	OPEN
1	1-1-17	X	X			
3	1-1-31			X	X	
2	1-1-28	X				X
4	1-1-48			X		

CUTLER-HAMMER TYPE E30 JVS WITH TWO KLA3 CONTACT BLOCKS

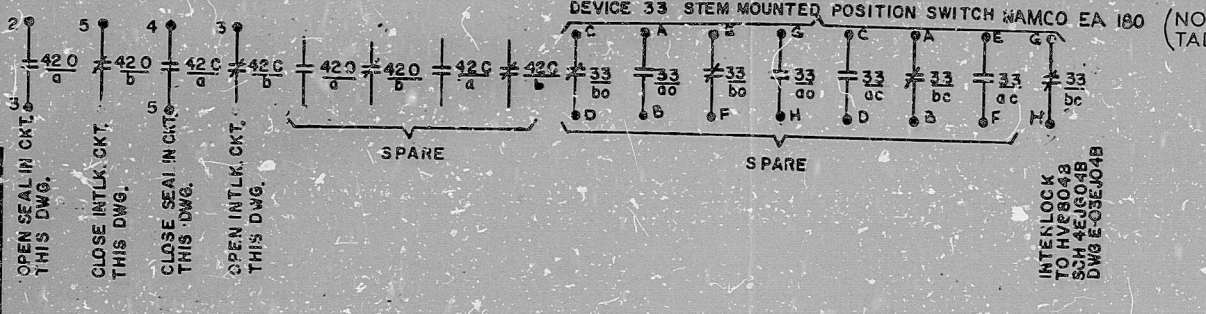
HAND INDICATING SWITCH HIS-SEE TABLE A MOMENTARY CONTACTS

LIMIT SWITCH CONTACT DEVELOPMENT	ROTOR	VALVE POSITION		FUNCTION
		FULL OPEN	FULL CLOSED	
1	OPEN			BYPASS CKT
2	OPEN			COMPUTER
3	OPEN			IND LIGHT
4	OPEN			OPEN CKT
5	CLOSE			BYPASS CKT
6	CLOSE			SPARE
7	CLOSE			IND LIGHT
8	CLOSE			NOT USED
9	CLOSE			NOTE 5
10	INT. 1			SPARE
11	INT. 1			SPARE
12	INT. 1			SPARE
13	INT. 2			SPARE
14	INT. 2			NOTE 2
15	INT. 2			SPARE
16	INT. 2			SPARE
17	WS	TORQUE SW	OPENS ON HI CLOSING TORQUE	
18	WS	TORQUE SW	OPENS ON HI OPENING TORQUE	

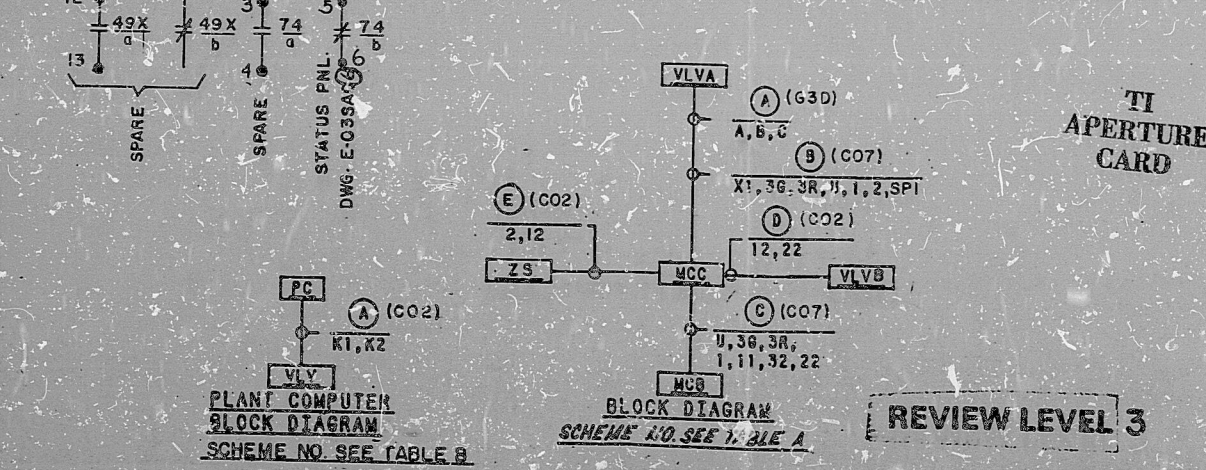
SOLID BAR INDICATES CONTACT CLOSED

- REFERENCE DWG: M-02EM01
- CONTACT CLOSURES ON RHR PUMP A TO CHARGING PUMP VLV CLOSED, SEE DWG E-03EJ04A
 - CONTACT CLOSURES ON RHR PUMP B TO CHARGING PUMP VLV CLOSED. SEE DWG E-03EJ04B
 - TO STATUS PANEL, SEE DWG E-03SA04
 - JUMPER TO BE INSTALLED PRIOR TO CORE LOADING
 - HEATER 25 WATTS, MANUFACTURER TYPE WARD LEONARD, P/N 25 FT50WL OR EQUAL
 - INTERLOCK TO HV8804A, SEE SCH. IEJG04A DWG. NO. E-03EJ04A
 - CONTACT NUMBERS SHOWN IN PARENTHESIS ARE APPLICABLE TO SCHEME NO IEMG03B THIS DWG.

COMPUTER REF DWG	J-106-015	J-106-015
COMPUTER V.P. NO.	EMZ8814A	EMZ8814B
COMPUTER POINT	RJ159A	RJ159A
COMPUTER LOC - PC	EMHV8814A	EMHV8814B
VALVE LOCATION-VLV	EMHV8814A	EMHV8814B
COMPUTER SCHEME NO.	IEMR03A	IEMR03B



MCCA LOG#	MCCA	RG01ADF1	NG01ADF1
HIS NUMBER	EMH38814A	EMH38814B	
VALVE NO.-VLVB	EJHV8804A	EJHV8804A	
STEM MTD. SW - ZS	EJZ88048A	EJZ88048A	
MCC LOCATION-MCC	NG01AER3	NG01AER2	
HIS LOCATION-MCB	RL017	RL017	
STEM MTD SW NO.	EMZ8814A	EMZ8814B	
VALVE NO.-VLVA	EMHV8814A	EMHV8814B	
SCHEME NO.	IEMG03A	IEMG03B	



TI APERTURE CARD

NO.	DATE	REVISION	BY	CHKD	ENGR	PRGR	DRWG
1	11/17/82						

BECHTEL
2AITHERSBURG, MARYLAND

SKUPPS

SCHEMATIC DIAGRAM
SIS MINIFLOW ISOLATION VALVES

JOB NO	BECHTEL DRAWING NO.	REV
10488	E-03EM03 (O)	6

I certify that the image contained on this frame was made in the normal and regular course of business, on the date stated below and that it is an accurate reproduction of the document(s) submitted to Micrographics. DATE 11-18-82 OPERATOR J. J. ...

16X

PDR KIDS

8410050462

