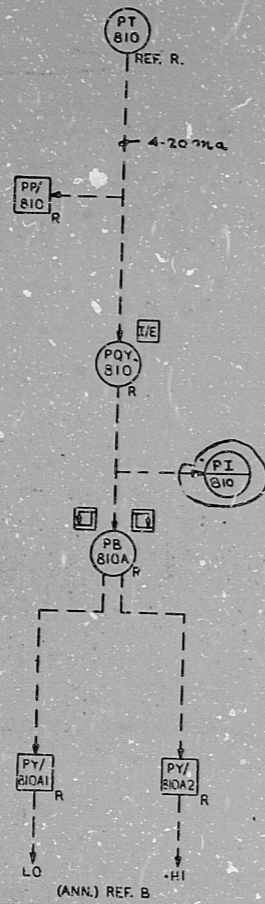


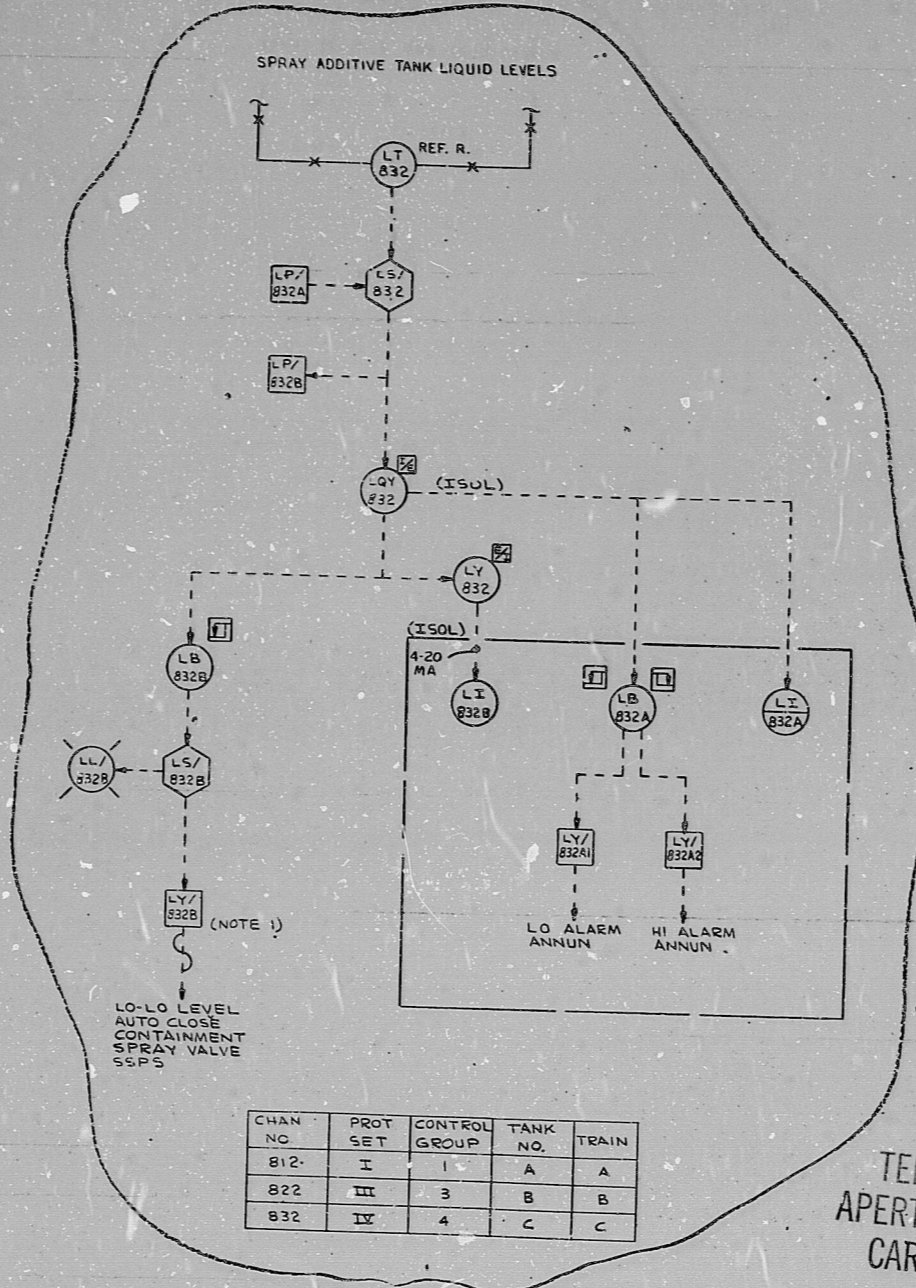
8758D76

SPRAY ADDITIVE TANK COVER GAS PRESSURE CONTROL GROUP I



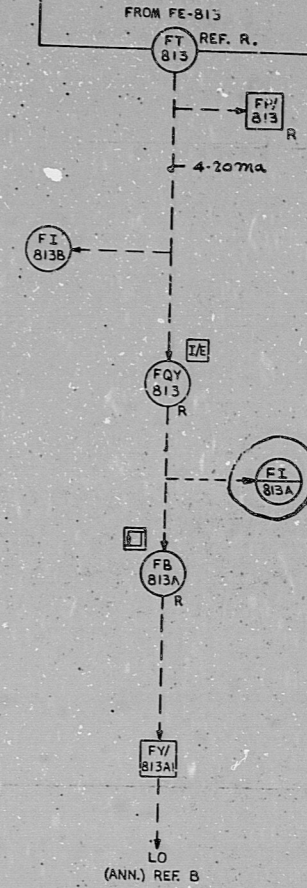
SPRAY ADDITIVE TANK COVER GAS PRESSURE		
CONTROL GROUP	CHANNEL NO.	TANK NO.
1	810	A
3	820	B
4	830	C

SPRAY ADDITIVE TANK LIQUID LEVELS



CHAN NO	PROT SET	CONTROL GROUP	TANK NO.	TRAIN
812	I	1	A	A
822	III	3	B	B
832	IV	4	C	C

SPRAY PUMP DISCHARGE FLOW CONTROL GROUP I



SPRAY PUMP DISCHARGE FLOW		
CONTROL GROUP	CHANNEL NO.	PUMP NO.
1	813	A
3	823	B
4	833	C

INFORMATION
THIS DOCUMENT IS
SUBJECT TO REVISION
WITHOUT NOTIFICATION
TO THE USER OR THIS
COPY

SOLID WEAVERS PROJECT
 DIRECTOR: J. H. ...
 AUTHORITY: ...
 ...

TERA
APERTURE
CARD

NOTES
1. AC RELAY REQUIRED ONLY ON L-832 CHANNEL.

1. TGX/THX-320
 2. 944350/438
 CHANGE
 TGX/THX-320
 ECN: 30819
 REVISIONS CIRCLED
 1. 7/15/76
 2. 8/1/76
 3. 8/1/76
 4. 8/1/76
 5. 8/1/76
 6. 8/1/76
 7. 8/1/76
 8. 8/1/76
 9. 8/1/76
 10. 8/1/76
 11. 8/1/76
 12. 8/1/76
 13. 8/1/76
 14. 8/1/76
 15. 8/1/76
 16. 8/1/76
 17. 8/1/76
 18. 8/1/76
 19. 8/1/76
 20. 8/1/76
 21. 8/1/76
 22. 8/1/76
 23. 8/1/76
 24. 8/1/76
 25. 8/1/76
 26. 8/1/76
 27. 8/1/76
 28. 8/1/76
 29. 8/1/76
 30. 8/1/76
 31. 8/1/76
 32. 8/1/76
 33. 8/1/76
 34. 8/1/76
 35. 8/1/76
 36. 8/1/76
 37. 8/1/76
 38. 8/1/76
 39. 8/1/76
 40. 8/1/76
 41. 8/1/76
 42. 8/1/76
 43. 8/1/76
 44. 8/1/76
 45. 8/1/76
 46. 8/1/76
 47. 8/1/76
 48. 8/1/76
 49. 8/1/76
 50. 8/1/76
 51. 8/1/76
 52. 8/1/76
 53. 8/1/76
 54. 8/1/76
 55. 8/1/76
 56. 8/1/76
 57. 8/1/76
 58. 8/1/76
 59. 8/1/76
 60. 8/1/76
 61. 8/1/76
 62. 8/1/76
 63. 8/1/76
 64. 8/1/76
 65. 8/1/76
 66. 8/1/76
 67. 8/1/76
 68. 8/1/76
 69. 8/1/76
 70. 8/1/76
 71. 8/1/76
 72. 8/1/76
 73. 8/1/76
 74. 8/1/76
 75. 8/1/76
 76. 8/1/76
 77. 8/1/76
 78. 8/1/76
 79. 8/1/76
 80. 8/1/76
 81. 8/1/76
 82. 8/1/76
 83. 8/1/76
 84. 8/1/76
 85. 8/1/76
 86. 8/1/76
 87. 8/1/76
 88. 8/1/76
 89. 8/1/76
 90. 8/1/76
 91. 8/1/76
 92. 8/1/76
 93. 8/1/76
 94. 8/1/76
 95. 8/1/76
 96. 8/1/76
 97. 8/1/76
 98. 8/1/76
 99. 8/1/76
 100. 8/1/76

SPRAY ADDITIVE TANK COVER GAS PRESSURE/
SPRAY ADDITIVE TANK LIQUID LEVELS/
SPRAY PUMP DISCHARGE FLOW

DR. D. PETROCELLI	HIG-74	Westinghouse Electric Corporation
CHKR.		NUCLEAR ENERGY SYSTEM, PITTSBURGH, PA., U.S.A.
DES. ENG.	22-76	TITLE: TGX/THX
APP. ENG.		PROCESS CONTROL SYSTEMS
APP.		BLOCK DIAGRAMS
APP.		SCALE: 8758D76
APP.		DIMENSIONS IN INCHES SHEET 32
APP.		DO NOT SCALE SUB PZ 3

17" 11" 8.5" 8.5" 17"

17" 11" 8.5" 8.5" 17"

11 C B A A O W A V B C I 24 36 21 11 36

2125x14630wn

RIDS

8112080069

