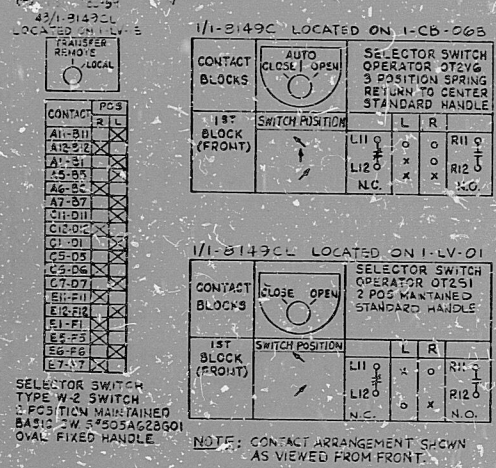


TI
APERTURE
CARD
FOR OFFICE AND
ENGINEERING USE ONLY



SYMBOLS
 ⚡ INDICATES SWITCH W/OLE DISCONNECT OR TERMINAL ON RACK DISCONNECT
 ○ INDICATES TERMINAL AT VALVE OPEN LIMIT SWITCH
 ⊙ INDICATES TERMINAL AT VALVE CLOSE LIMIT SWITCH
 ⊖ INDICATES TERMINAL AT VALVE SOLENOID
 ⊕ INDICATES TERMINAL AT CABLE ROOM TERMINATION RACK 1-1010
 ■ INDICATES TERMINAL IN HOT SHUT-DOWN PANEL 1-LV-01
 ○ INDICATES TERMINAL IN NE-5 AUX RELAY RACK #1
 ⊖ VALVE LIMIT SWITCH VALVE 1-8149C
 ⊖ OPEN ONLY WHEN VALVE IS FULLY CLOSED
 ⊕ OPEN EXCEPT WHEN VALVE IS FULLY OPEN
 ⊖ CLOSED ONLY WHEN VALVE IS FULLY CLOSED
 ⊕ CLOSED EXCEPT WHEN VALVE IS FULLY OPEN
 ○ INDICATES WIRE PREFIX C1-3149C
 ■ INDICATES TERMINAL IN SHUT-DOWN PANEL 1-LV-01
 * THESE SWITCHES ARE DOUBLE POLE
 * DOUBLE THROW TYPE (N.O. & N.C. CONTACTS) UNUSED CONTACTS NOT SHOWN

NOTES
 1. FOR SHEET ISSUE RECORD SHEET INDEX, SEE THIS DWG, SHEET #0
 2. CONTACTS OPEN ON PRESSURE/LEK LOW LEVEL
 3. THIS SCHEMATIC DRAWN FROM WESTINGHOUSE Dwg 2710336, SHEET #345
 4. CABLING FOR THIS EQUIPMENT IS ASSOCIATED CLASS I TRAIN A
 5. VALVE IS SHOWN IN FULLY OPEN POSITION
 6. FOR ADDITIONAL NOTES & SYMBOLS SEE THIS DRAWING SHEET #00
 7. CONTACTS OPEN WHEN VALVES 1-LV-459 & 1-LV-461 ARE FULLY CLOSED
 8. FOR INSTRUMENTATION POINTS PROGRAM SEE DWG 2123111-2-3-15
 9. SHIELD IS TO BE PROVIDED AT MULTIPLEXER CAB ONLY
 10. SEE REFERENCE DRAWINGS
 1. THIS DRAWING, SHEET #19
 2. THIS DRAWING, SHEET #20
 3. SHEET #21, SHEET #22

CLASS I

STRUCTURES, MECHANICAL AND ELECTRICAL EQUIPMENT AND SYSTEMS SHALL BE ESSENTIAL TO ASSURE THE INTEGRITY OF THE REACTOR COOLING SYSTEM AND TO MAINTAIN THE CAPABILITY TO SHUT DOWN THE REACTOR IN EVENT OF A FAILURE OF THE COOLING SYSTEM OR ACCIDENT WHICH COULD RESULT IN POTENTIAL OFFSITE EXPOSURE COMPARE TO THE GUIDELINE EXPOSURE

NO.	DATE	BY	CHKD	APPD	REVISION	REASON
1	12-21-82	JK	JK	JK	CONSTR. INCORP. CORP. VOS	
2	1-13-83	JK	JK	JK	CONSTR. INCORP. CORP. VOS	
3	1-28-83	JK	JK	JK	CONSTR. INCORP. CORP. VOS	
4	7-21-83	JK	JK	JK	CONSTR. INCORP. CORP. VOS	
5	7-21-83	JK	JK	JK	CONSTR. INCORP. CORP. VOS	
6	7-21-83	JK	JK	JK	CONSTR. INCORP. CORP. VOS	
7	7-21-83	JK	JK	JK	CONSTR. INCORP. CORP. VOS	
8	7-21-83	JK	JK	JK	CONSTR. INCORP. CORP. VOS	
9	7-21-83	JK	JK	JK	CONSTR. INCORP. CORP. VOS	
10	7-21-83	JK	JK	JK	CONSTR. INCORP. CORP. VOS	

TEXAS UTILITIES SERVICES, INC.
 AGENT FOR
DALLAS POWER & LIGHT COMPANY
TEXAS ELECTRIC SERVICE COMPANY
TEXAS POWER & LIGHT COMPANY

COMANCHE PEAK S.E.S.
 1980-82 - 2300 MW INSTALLATION

SOLENOID OPERATED VALVE
1-8149C
LETDOWN ORIFICE ISOLATION

Gibbs & Hill, Inc.
 ENGINEERS, ARCHITECTS, CONSTRUCTORS
 2323-El-0061
 SHEET No. 38

8410050450

PDR RIDS

8410050450

