

154-1001 CSTD 10/22/82

This drawing and the station it covers is the property of the utilities which are participating in the SNUPPS Project. It is loaned on the borrower's express agreement that it will not be reproduced, stored, or otherwise used without the written consent given by the SNUPPS Utilites to the borrower.

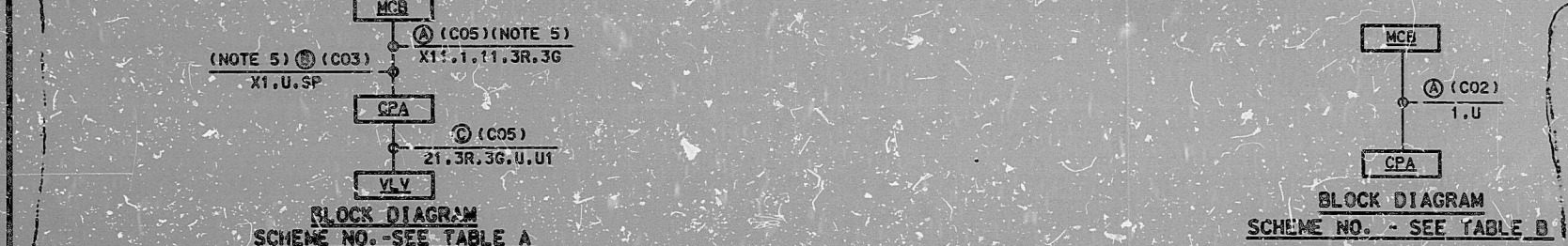
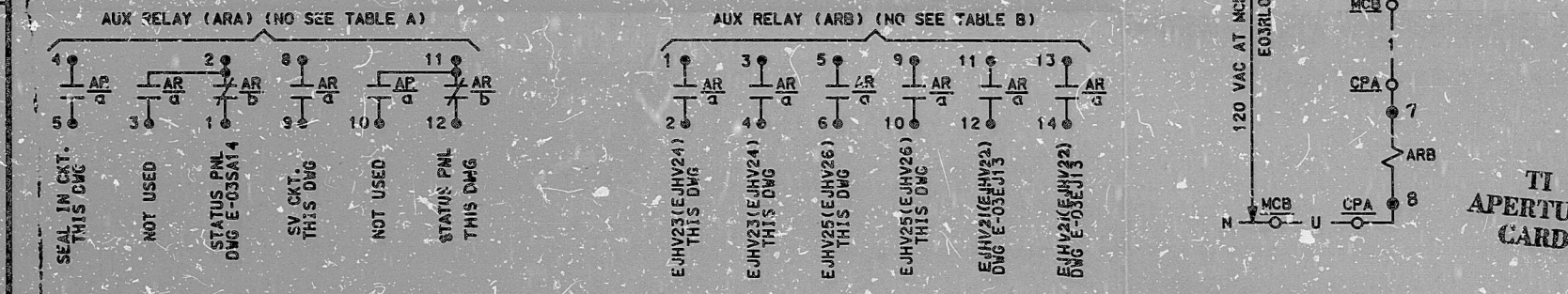
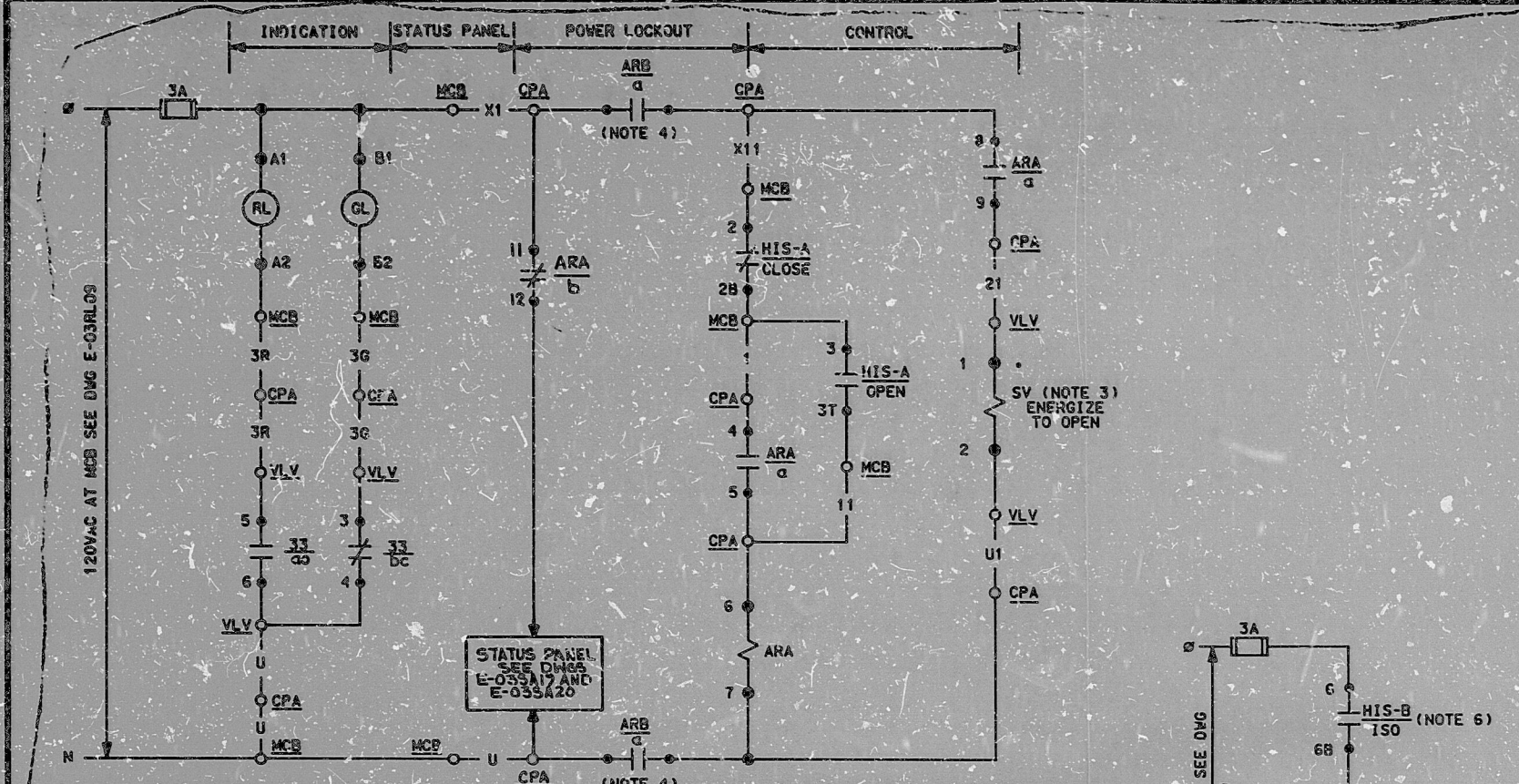


TABLE A

ARB CONTACT NUMBERS	1-2,3-4	1-2,3-4	5-6,9-10	5-6,9-10
AUX RELAY B NUMBER	3XEJ15	3XEJ16	3XEJ15	3XEJ16
AUX RELAY A NUMBER	3XEJ11	3XEJ12	3XEJ13	3XEJ14
AUX RELAY A & B LOC. CPA	RP139	RP140	RP139	RP140
HIS NUMBER	EJHIS23	EJHIS24	EJHIS25	EJHIS26
HIS LOCATION - MCB	RL011	RL011	RL011	RL011
VALVE NO. - VLV	EJHV23	EJHV24	EJHV25	EJHV26
SCHEME NO	1EJY14A	4EJY14B	1EJY14C	4EJY14D

TABLE B

AUX RELAY B NUMBER	3XEJ15	3XEJ16
AUX RELAY B LOC-CPA	RP139	RP140
HIS-B NUMBER	SJHIS136	SJHIS135
HIS-B LOC-MCB	RL011	RL011
SCHEME NO	1EJY14E	4EJY14F

OPEN		CONTACT		POSITION	
GL	RL			NORM	CLOSE
		1	1-10 1T	X	X
		2	1-10 2T	X	X
		3	1-10 3T	X	X
		4	1-10 4T	X	X

CUTLER-HAMMER TYPE E03JYS WITH TWO KLAS CONTACT BLOCKS

HAND INDICATING SWITCH HIS-SEE TABLE A MOMENTARY CONTACT

DEVICE 33 - POSITION SWITCHES

POS	CONTACT	VALVE POSITION		FUNCTION
		CLOSED	OPEN	
CLOSED	3-4 bc			GREEN LIGHT THIS DWG
OPEN	5-6 ad			RED LIGHT THIS DWG

SOLID BAR INDICATES CLOSED CONTACT

REFERENCE DWGS:

- J-02EJ04
- M-02EJ01
- 6. FOR HIS-B TYPE AND CONTACT DEVELOPMENT SEE DWG E-035J07.
- 5. CABLE A MUST BE ROUTED SEPARATELY FROM CABLE B.
- 4. CONTACT OPENS WHEN POWER LOCKOUT SWITCH IS IN THE ISOLATE POSITION. FOR RELAY AND CONTACT NUMBERS SEE TABLE A.
- 3. 5 LENOID COIL IS DC OPERATED VIA A VENDOR SUPPLIED RECTIFIER AND ZENER DIODE CIRCUIT. SEE VALCOR DWG BECHTEL V.P. J-603A-0038.0040.0073. AND 0027.
- 2. VALVE SHOWN IN FULL CLOSED POSITION.
- 1. VALVE FAILS CLOSED.

NOTES:

DCPCS-5

NO.	DATE	REVISIONS	BY	CHK	INSTR	ENGR	PROJ	ENGR
1		REV HIS CONTACT BLK NO. 136 TO 135						
2		ISSUED FOR CONSTR. TO						
3		INSTR. JCP CS-5						

SCALE N.T.S. DESIGNED GG DRAWN CAD CHECKED ENGR

BECHTEL
GAITHERSBURG, MARYLAND

SNUPPS

SCHEMATIC DIAGRAM
PASS SUMP SAMPLE
ISOLATION VALVES

UTILITY DRAWING NO.	REV

JOB NO.	BECHTEL DRAWING NO.	REV
10466	E-03EJ14(Q)	1

REVIEW LEVEL 3

REF DFN = [.] DFN = .DGN [54.4 1 E03EJ14 .DGN] PLOT SCALE = 11

I certify that the image contained on this frame was made in the normal and regular course of business, on the date stated below and that it is an accurate reproduction of the document(s) submitted to Micrographics.
DATE 1-16-84 OPERATOR [Signature]

10 X

8410050445

PDR RIDS

