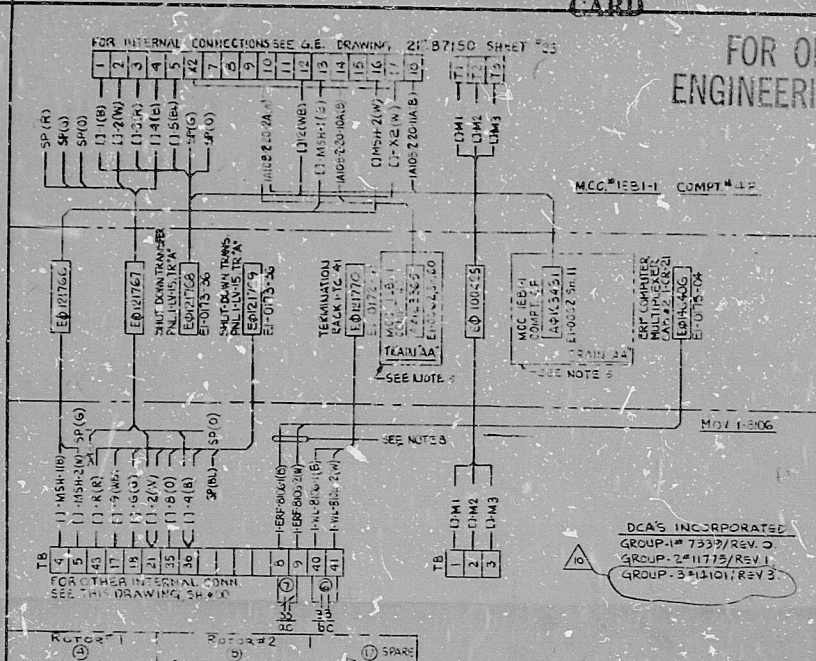
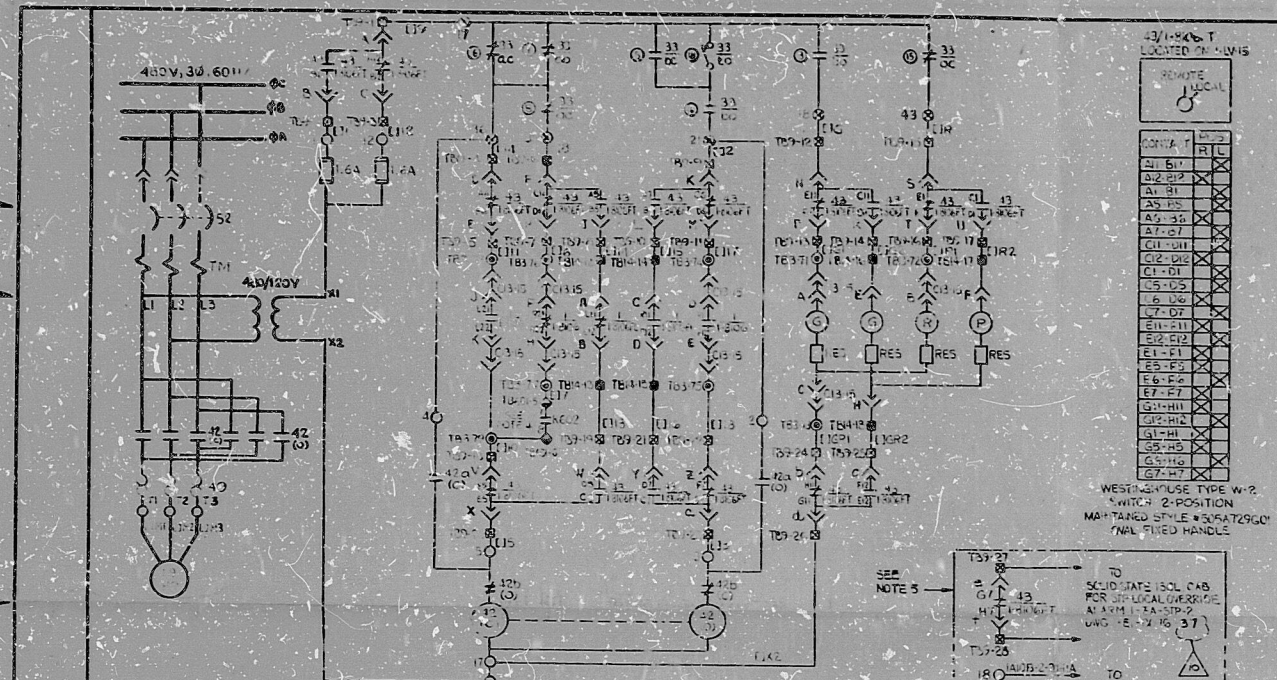


TI
APERTURE
CARD

FOR OFFICE AND
ENGINEERING USE ONLY

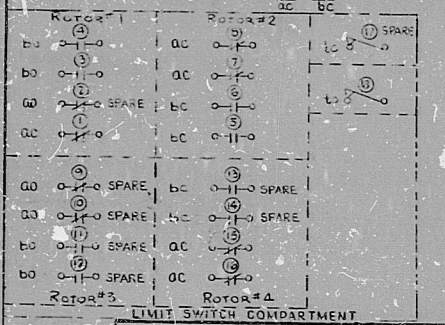


NOTES INDICATED IN 1-20-06

SWITCH POSITION	L	R
1ST BLOCK (FRT)	L11	R11
2ND BLOCK	L12	R12
	L21	R21
	L22	R22
	L23	R23
	L24	R24
	L25	R25
	L26	R26
	L27	R27
	L28	R28
	L29	R29
	L30	R30

- SYMBOLS**
- INDICATES TERMINAL IN MOTOR CONTROL CENTER (MCC)
 - INDICATES TERMINAL IN VALVE CONTROL CENTER (VCC)
 - INDICATES TERMINAL IN SOLID STATE CONTROL CENTER (SSCC)
 - INDICATES TERMINAL IN MOTOR CONTROL CENTER (MCC)
 - INDICATES TERMINAL LOCAL IN SUBJECT M.O.V.
 - VALVE LIMIT SWITCH (VALVE 1-200)
 - DC - OPEN ONLY WHEN VALVE IS FULLY CLOSED
 - DO - OPEN EXCEPT WHEN VALVE IS FULLY OPEN
 - DC - CLOSED ONLY WHEN VALVE IS FULLY CLOSED
 - DO - CLOSED EXCEPT WHEN VALVE IS FULLY OPEN
 - VALVE TORQUE SWITCH (VALVE 1-200)
 - DC - OPERATED BY TORQUE RESPONSIVE MECHANISM TO STOP VALVE USING
 - DO - OPERATED BY TORQUE RESPONSIVE MECHANISM TO STOP VALVE OPENING
 - INDICATES WIRE IN CABLE

- NOTES**
- FOR INSTRUMENTATION & CONTROL SEE 4-24-06 573 DWG 2313-11-2257 IS
 - FOR SHEET ISSUES, RECORD 4 SHEET INDEX SEE THIS DWG SHEET 10.
 - THIS SCHEMATIC DRAWN FROM WESTINGHOUSE D-271C33G, SH # 323.
 - CONTACT CLOSURES ON SAFETY INJECTION.
 - ALL WIRING CABLING FOR THIS EQUIPMENT IS ASSOCIATED CLASS "1E1" TRAIN "A" VALVE IS SHOWN IN FULLY OPEN POSITION.
 - FOR ADDITIONAL NOTES & SYMBOLS SEE THIS DRAWING SHEET #00.
 - SHEET IS TO BE REPRODUCED AT MULTIPLE PER CAS CAL



THIS DOCUMENT
AFFECTED BY
DESIGN CHANGES

TEXAS UTILITIES SERVICES INC.
AGENT FOR:
DALLAS POWER & LIGHT COMPANY
TEXAS ELECTRIC SERVICE COMPANY
TEXAS POWER & LIGHT COMPANY

COMANCHE PEAK S.E.S.
1980-82 - 2300 MW INSTALLATION

MOTOR OPERATED VALVE (MOV) CHARGING PUMP TO REACTOR COOLANT SYSTEM ISOLATION

Gibbs & Hill Inc.
2323-EP-0061
JOB NO. 2323
Sheet No. 03

8410050444

PDR RIDS

9410050444

