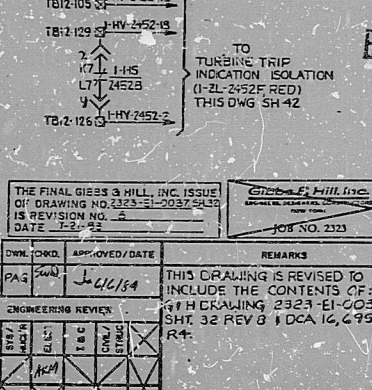
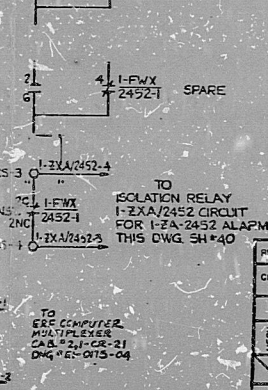


- SYMBOLS**
- - INDICATES TERMINAL AT HOT SHUTDOWN PANEL I-HV-01
 - - INDICATES TERMINAL AT TERMINATION RACK I-TC-26
 - ⊙ - INDICATES TERMINAL AT BOP AUXILIARY RELAY RACK #4
 - ⊕ - INDICATES MAIN CONTROL BOARD, HOT SHUTDOWN PANEL MODULE DISCONNECT OR TERMINATION RACK DISCONNECT
 - ⊖ - INDICATES TERMINAL AT VALVE SOLENOID
 - ⊗ - INDICATES TERMINAL AT VALVE OPEN LIMIT SWITCH
 - ⊘ - INDICATES TERMINAL AT VALVE CLOSED LIMIT SWITCH
 - ⊙ - VALVE LIMIT SWITCH VALVE I-HV-2452-11
 - ⊙ - OPEN ONLY WHEN VALVE IS FULLY CLOSED
 - ⊙ - OPEN EXCEPT WHEN VALVE IS FULLY OPEN
 - ⊙ - CLOSED EXCEPT WHEN VALVE IS FULLY OPEN
 - ⊙ - CLOSED ONLY WHEN VALVE IS FULLY CLOSED
 - ⊙ - INDICATES TERMINAL AT SOLID STATE PROTECTION SYSTEM CABINET "A"
 - ⊙ - INDICATES WIRE PREFIX SAME AS VALVE I-HV-2452-11
 - ⊙ - INDICATES SWITCHES ARE DOUBLE POLE DOUBLE THROW TYPE (2NO & 2NC CONTACTS) UNUSED CONTACTS ARE NOT SHOWN
 - ⊙ - INDICATES TERMINAL AT LOCAL DEVICE
 - ⊙ - INDICATES TERMINAL AT SGP AUXILIARY RELAY RACK #6
 - ⊙ - INDICATES TERMINAL AT SHUT-DOWN TRANSFER PANEL I-HV-15

- NOTES**
1. FOR SHEET ISSUE RECORD & SHEET INDEX SEE THIS DRAWING SHEET 0.
 2. FOR INSTRUMENTATION & CONTROL DIAGRAM SEE DRAWING 2323-MI-2206-02.
 3. VALVE IS SHOWN IN FULLY OPEN POSITION.
 4. FOR CONTROL SWITCH I-HV-2452-11, I-HV-2452-23, & I-HV-2452-C DEVELOPMENTS SEE THIS DRAWING SHEET 33.
 5. CONTACT CLOSURES ON 1/2" SUCTION PRESSURE; CONTACT INTERRUPTING RATINGS: CIA INDUCTIVE AT 125V DC
 6. CONTACT OPENS ON BLACKOUT SIGNAL
 7. CONTACT OPENS ON 2/4 LO-LO LEVEL IN 2/4" STEAM GENERATORS.
 8. FOR ADDITIONAL NOTES & SYMBOLS SEE THIS DRAWING SHEET 00.
 9. WIRING & EQUIPMENT INSIDE DASHED LINE IS ASSOCIATED CLASS "IE" TRAIN "AA"
 10. RELAY IS USED FOR UNTIMED APPLICATION DUE TO ITS LOW CURRENT DRAIN.
- REFERENCE DRAWINGS**
1. THIS DRAWING, SA-22
 2. EI-0070 SH-25



FOR OFFICE AND ENGINEERING USE ONLY

TRAIN "A"

REV. DATE	BY	APPROVED/DATE	REMARKS
01	SA	JUL 18/84	THIS DRAWING IS REVISED TO INCLUDE THE CONTENTS OF: 1. DRAWING 2323-EI-0037 SHEET 32 REV B DCA 16, 295 R-4
ENGINEERING REVIEW MECH: [] ELEC: [] INSTR: [] SAFETY: [] QUAL: [] PROJECT: []			CLASS I (NUCLEAR SAFETY RELATED) SAFETY CLASS 1 SAFETY CLASS 2 SAFETY CLASS 3 SAFETY CLASS 4 SAFETY CLASS 5 SAFETY CLASS 6 SAFETY CLASS 7 SAFETY CLASS 8 SAFETY CLASS 9 SAFETY CLASS 10 SAFETY CLASS 11 SAFETY CLASS 12 SAFETY CLASS 13 SAFETY CLASS 14 SAFETY CLASS 15 SAFETY CLASS 16 SAFETY CLASS 17 SAFETY CLASS 18 SAFETY CLASS 19 SAFETY CLASS 20 SAFETY CLASS 21 SAFETY CLASS 22 SAFETY CLASS 23 SAFETY CLASS 24 SAFETY CLASS 25 SAFETY CLASS 26 SAFETY CLASS 27 SAFETY CLASS 28 SAFETY CLASS 29 SAFETY CLASS 30 SAFETY CLASS 31 SAFETY CLASS 32 SAFETY CLASS 33 SAFETY CLASS 34 SAFETY CLASS 35 SAFETY CLASS 36 SAFETY CLASS 37 SAFETY CLASS 38 SAFETY CLASS 39 SAFETY CLASS 40 SAFETY CLASS 41 SAFETY CLASS 42 SAFETY CLASS 43 SAFETY CLASS 44 SAFETY CLASS 45 SAFETY CLASS 46 SAFETY CLASS 47 SAFETY CLASS 48 SAFETY CLASS 49 SAFETY CLASS 50 SAFETY CLASS 51 SAFETY CLASS 52 SAFETY CLASS 53 SAFETY CLASS 54 SAFETY CLASS 55 SAFETY CLASS 56 SAFETY CLASS 57 SAFETY CLASS 58 SAFETY CLASS 59 SAFETY CLASS 60 SAFETY CLASS 61 SAFETY CLASS 62 SAFETY CLASS 63 SAFETY CLASS 64 SAFETY CLASS 65 SAFETY CLASS 66 SAFETY CLASS 67 SAFETY CLASS 68 SAFETY CLASS 69 SAFETY CLASS 70 SAFETY CLASS 71 SAFETY CLASS 72 SAFETY CLASS 73 SAFETY CLASS 74 SAFETY CLASS 75 SAFETY CLASS 76 SAFETY CLASS 77 SAFETY CLASS 78 SAFETY CLASS 79 SAFETY CLASS 80 SAFETY CLASS 81 SAFETY CLASS 82 SAFETY CLASS 83 SAFETY CLASS 84 SAFETY CLASS 85 SAFETY CLASS 86 SAFETY CLASS 87 SAFETY CLASS 88 SAFETY CLASS 89 SAFETY CLASS 90 SAFETY CLASS 91 SAFETY CLASS 92 SAFETY CLASS 93 SAFETY CLASS 94 SAFETY CLASS 95 SAFETY CLASS 96 SAFETY CLASS 97 SAFETY CLASS 98 SAFETY CLASS 99 SAFETY CLASS 100
TEXAS UTILITIES GENERATING CO. SOLENOID OPERATED VALVE I-HV-2452-1 TURB DRIVEN APP MAIN STEAM HDR TI ISOL VALVE SCHEM. DIAG. 2323-EI-0037 32 CP-1			THE FINAL GIBBS & HILL, INC. ISSUE OF DRAWING NO. 2323-EI-0037-0423 IS REVISION NO. 4 DATE 7-2-84 GIBBS & HILL, INC. 2323-EI-0037 SHEET NO. 32 JOB NO. 2323

8410050403

PDR RIDS

8410050403

