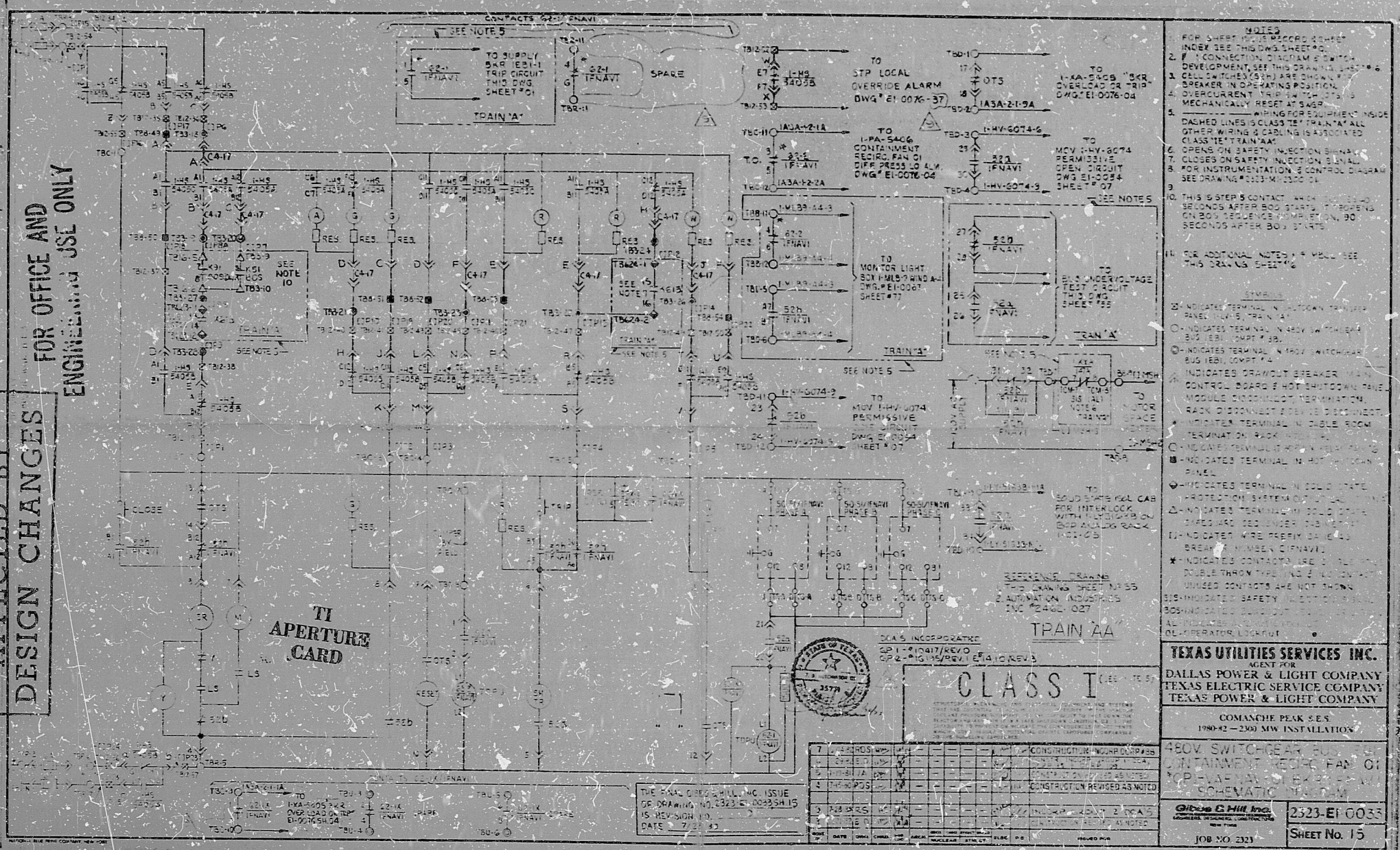


THIS DOCUMENT
 IS AFFECTED BY
 DESIGN CHANGES

FOR OFFICE AND
 ENGINEERING USE ONLY



- NOTES**
- FOR SHEET NO. 15 RECORD SHEET INDEX SEE THIS DWS SHEET NO. 15
 - CONNECTING TO SCHEMATIC DEVELOPMENT, SEE THIS DRAWING SHEET NO. 15
 - CELLS IN PARENTHESIS ARE DISCONNECTED IN OPERATING POSITION
 - MECHANICALLY RESET AT SWER
 - WIRING FOR EQUIPMENT INSIDE DASHED LINES IS CLASS TEST TRAIN AA ALL OTHER WIRING & CABLING IS AUTOMATIC CLASS TEST TRAIN AA
 - OPENS ON SAFETY INJECTION SIGNAL
 - CLOSES ON SAFETY INJECTION SIGNAL
 - FOR INSTRUMENTATION & CONTROL DIAGRAM SEE DRAWING NO. 2523-M-0000-01 SHEET 07
 - THIS SYSTEM CONTACT WHICH CLOSING 30 SECONDS AFTER BOG STARTS IT REOPENS ON BOG SEQUENCE COMPLETION, 30 SECONDS AFTER BOG STARTS
 - FOR ADDITIONAL NOTES SEE THIS DRAWING SHEET NO. 15

- SYMBOLS**
- INDICATES TERMINAL IN DOWN POSITION
 - INDICATES TERMINAL IN UP POSITION
 - INDICATES TERMINAL IN BOTH SWITCHBOARD BUS REEL COMPT 74
 - INDICATES DRAWOUT BREAKER MAIN CONTROL BOARD & HOT SHUTDOWN PANEL MODULE DISCONNECT TERMINATION
 - INDICATES TERMINAL IN DIESEL ROOM TERMINAL ON RACK IN DIESEL ROOM
 - INDICATES TERMINAL IN RACK IN DIESEL ROOM
 - INDICATES TERMINAL IN HOT IN DOWN POSITION
 - INDICATES TERMINAL IN COLD STATE PROTECTION SYSTEM ON
 - INDICATES TERMINAL IN COLD STATE CHARGED AND DISCONNECTED
 - INDICATES WIRE PRESBY DASHED BREAK NUMBER OF NAVI
 - INDICATES CONTACTS USE DOUBLE THROW TYPE AND 2 UNUSED CONTACTS ARE NOT SHOWN
 - INDICATES SAFETY INJECTION SIGNAL
 - INDICATES SAFETY INJECTION SIGNAL
 - INDICATES SAFETY INJECTION SIGNAL

TEXAS UTILITIES SERVICES INC.
 AGENT FOR
 DALLAS POWER & LIGHT COMPANY
 TEXAS ELECTRIC SERVICE COMPANY
 TEXAS POWER & LIGHT COMPANY

COMANCHE PEAK S.E.S.
 1980-82 - 2500 MW INSTALLATION

480V SWITCHGEAR BUSSES
 CONTAINMENT ROOM FAN ON
 MCP - VAV - NAVI - EXHAUST FAN
 SCHEMATIC DIAGRAM

Gibbs & Hill Inc.
 2523-EI-0035
 SHEET No. 15

JOB NO. 2321

NO.	DESCRIPTION	DATE	BY	CHKD.	APP.
1	ISSUED FOR CONSTRUCTION	7/22/82
2
3
4
5

THE DALLAS POWER & LIGHT COMPANY ISSUE OF DRAWING NO. 2523-EI-0035 SHEET 15 REV. NO. 10 DATE 7/22/82

8410050396

PDR RIDS

8410050396

