

17"

11"

8.5"

11"

8.5"

11"

8.5"

11"

8.5"

11"

17"

17"

11"

8.5"

11"

11"

8.5"

8.5"

11"

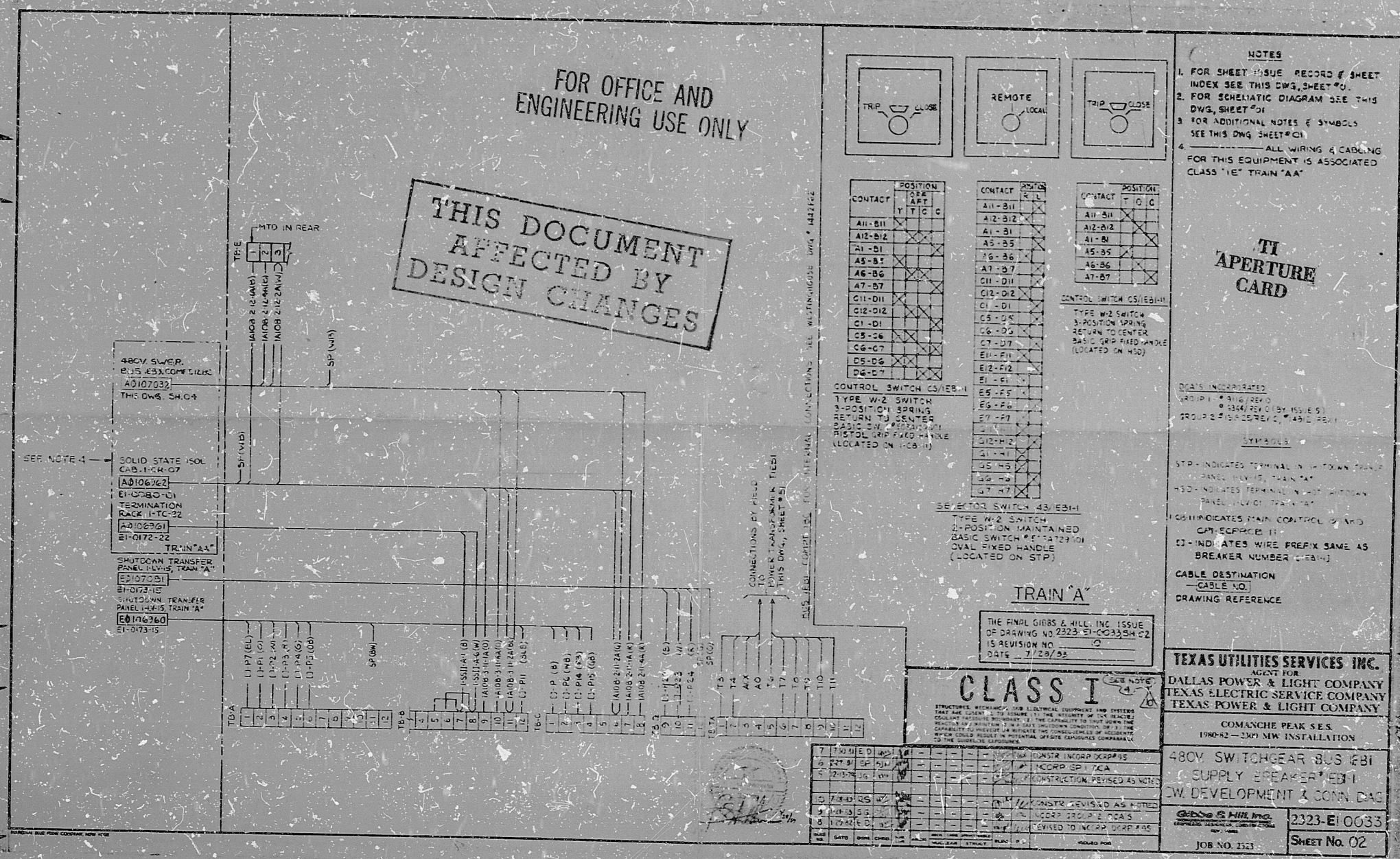
8.5"

11"

17"

FOR OFFICE AND
ENGINEERING USE ONLY

THIS DOCUMENT
AFFECTED BY
DESIGN CHANGES



- NOTES
1. FOR SHEET ISSUE RECORD & SHEET INDEX SEE THIS DWG, SHEET #01.
 2. FOR SCHEMATIC DIAGRAM SEE THIS DWG, SHEET #01.
 3. FOR ADDITIONAL NOTES & SYMBOLS SEE THIS DWG SHEET #01.
 4. ALL WIRING & CABLING FOR THIS EQUIPMENT IS ASSOCIATED CLASS '1E' TRAIN 'AA'.

TI
APERTURE
CARD

OWALS INDICATED:
VSDP1 - 1316 (REV 0)
0 334/254 (BY 1511 E 5)
GROUP 2 1512/257 (BY 1511 E 5)

SYMBOLS

STR - INDICATES TERMINAL IN DOWN PANEL, LEVEL 10, TRAIN 'A'

MSD - INDICATES TERMINAL IN UP SHEDDING PANEL, LEVEL 01, TRAIN 'A'

CS - INDICATES MAIN CONTROL OF A B C BREAKER NUMBER (E0107001)

ES - INDICATES WIRE PREFIX SAME AS BREAKER NUMBER (E0107001)

CABLE DESTINATION - CABLE NO. DRAWING REFERENCE

TEXAS UTILITIES SERVICES INC.
AGENT FOR
DALLAS POWER & LIGHT COMPANY
TEXAS ELECTRIC SERVICE COMPANY
TEXAS POWER & LIGHT COMPANY

COMANCHE PEAK S.E.S.
1980-82 - 230 MW INSTALLATION

480V SWITCHGEAR BUS EBI
SUPPLY BREAKER EBI
DEV. DEVELOPMENT & CONN. DWS

Gibbs & Hill, Inc.
2223-EI-0033
JOB NO. 2523 SHEET No. 02

8410050393

PDR RIDS

8410050393

